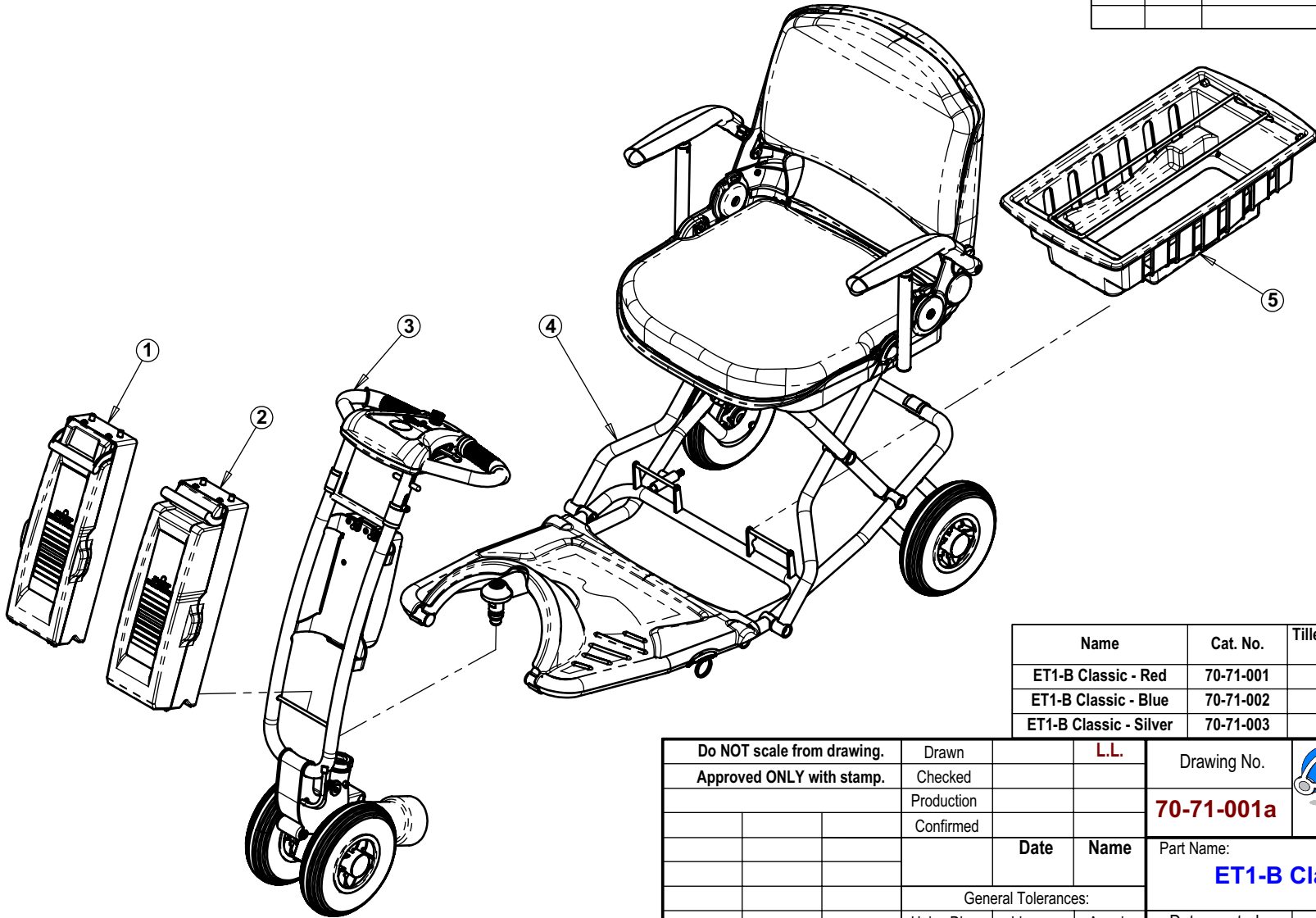





## **ET1-B Classic Maintenance Drawings**

Item	Qty.	Cat No.	Description
1	1	22-00-001	Battery Pack 7A Assembly
2	1	22-00-002	Battery Pack 12A Assembly
3	1	See Table	Tiller Classic Assembly - Red/Blue/Silver
4	1	See Table	Frame Classic Assembly - Red/Blue/Silver
5	1	20-70-001	Basket Assembly
6	1	61-71-001	Charger 12V 2A

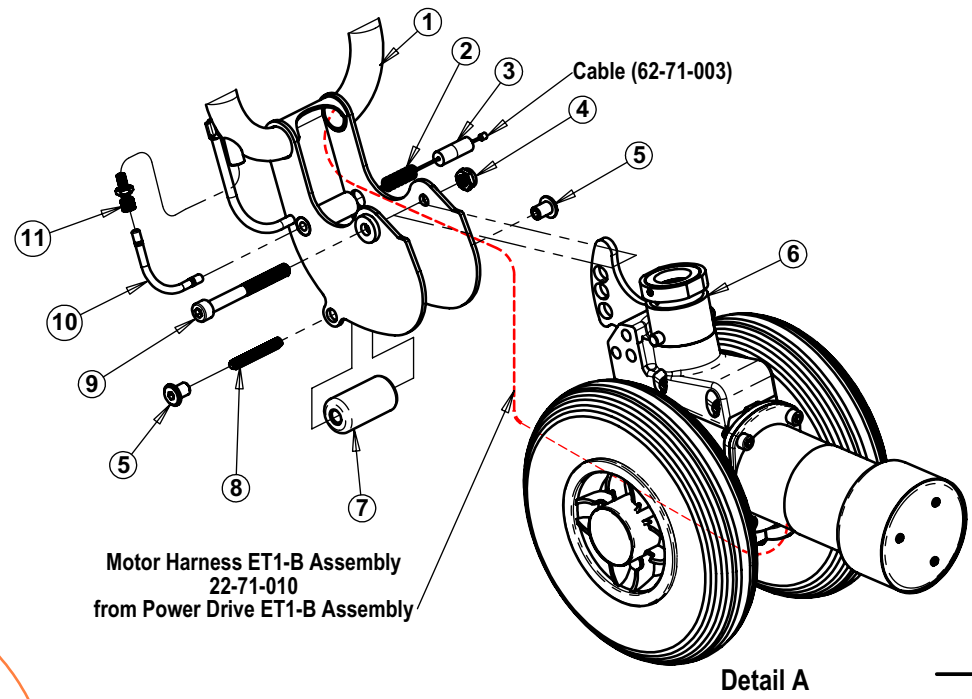
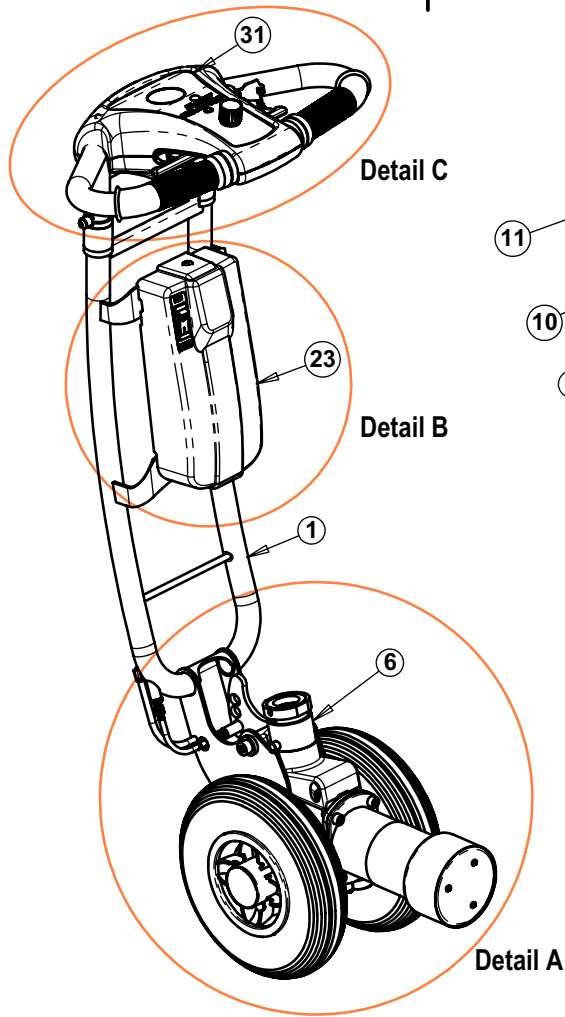
REMARKS:  
1. Charger NOT shown.



Name	Cat. No.	Tiller Classic Assembly (Part No. 3)	Frame Classic Assembly (Part No. 4)
ET1-B Classic - Red	70-71-001	20-71-001	20-71-004
ET1-B Classic - Blue	70-71-002	20-71-002	20-71-005
ET1-B Classic - Silver	70-71-003	20-71-003	20-71-006

Do NOT scale from drawing. Approved ONLY with stamp.			Drawn		L.L.	Drawing No.		 <b>TZORA</b> Active Systems Ltd. <small>Tel: 972-3-5398999 Fax: 972-3-6320879 www.tzora.com</small>	
			Checked			<b>70-71-001a</b>			
			Production			Part Name:		<b>ET1-B Classic - Red/Blue/Silver</b>	
			Confirmed						
					Date	Name			
			General Tolerances:						
			Holes Dia.	Linear	Angular	Date created	Scale	Sheet	Cat. No.
Date	Confirmed	Update	± mm.	± mm.	± °	<b>20 May 2009</b>	<b>1:10</b>	<b>1 of 1</b>	<b>See Table</b>

Item	Qty.	Cat No.	Description
1	1	See Table	Tiller Frame Classic - Red/Blue/Silver
2	1	65-70-007	Spring for Locking Pin
3	1	63-70-005	Column Locking Pin
4	1	74-10-003	Nut Nylok M8 Black
5	2	74-18-001	Nut Cap with Hex Socket M6
6	1	20-71-010	Power Drive ET1 Assembly
7	1	62-71-002	Roller
8	1	74-08-003	Set Screw Allen M6x45
9	1	74-02-004	Screw Allen M8x75 Black
10	1	62-71-003	Classic Position Cable 800/80
11	1	63-00-005	Adjustable Cable Stop (including nut)
12	2	74-16-002	Screw Philips Csk. Head. ST 2.9x10 Black
13	1	22-70-013	Contact Pin Holder Assembly
14	3	74-07-002	Screw Philips Csk. Head M5x12 Galv.
15	1	60-00-050	Control PCB
16	1	62-71-004	Nylon Pad $\phi 10x \phi 4.5$
17	1	74-02-006	Screw Allen. M4x10
18	1	60-00-046	Controller S-Drive 45A
19	2	74-12-004	Washer $\phi 4$ Galv.
20	2	74-07-002	Screw Allen M4x25 Galv.
21	1	22-00-003	Cable Controller to PCB
22	2	74-06-005	Screw Philips Pan Head M4x8 Black
23	1	22-70-006	Controller Cover Assembly
24	3	74-09-003	Screw Philips Pan Head ST 4.2x20
25	1	62-70-042	Control Panel Bottom Cover
26	1	60-16-008	Flat Cable RJ-45-8P L=470 mm.
27	1	62-70-005	Protector Clip Full Circle
28	1	62-70-035	Hand Grips ( Pair)
29	1	20-71-014	Wig-Wag Lever Assembly
30	2	74-06-005	Screw Philips Pan Head M4x8 Black
31	1	22-70-012	Control Panel Assembly
32	2	74-06-004	Screw Philips Pan Head M5x8 Black
33	1	60-70-005	Close End Wire Terminal
34	1	62-70-027	Release Bushing
35	2	74-08-004	Set Screw Allen M6x8
36	2	74-08-005	Screw Allen M6x25
37	2	62-70-020	PVC Cover
38	1	62-70-026	Lock Bushing for Tiller
39	1	74-06-003	Screw Philips Pan Head M5x20 Black
40	1	62-70-004	Protector Clip Full Circle with notch

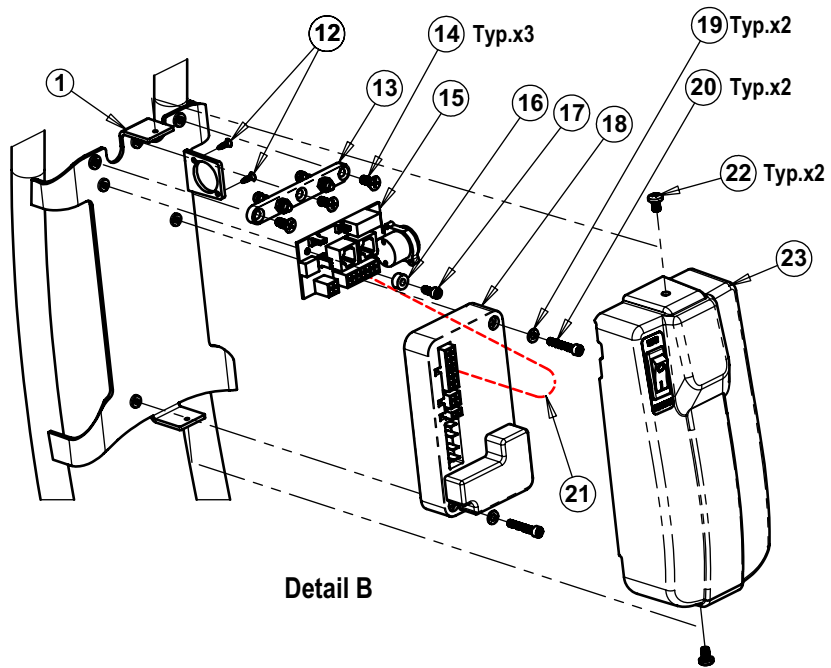


REMARKS:  
1. Route of Cables. - - - - -

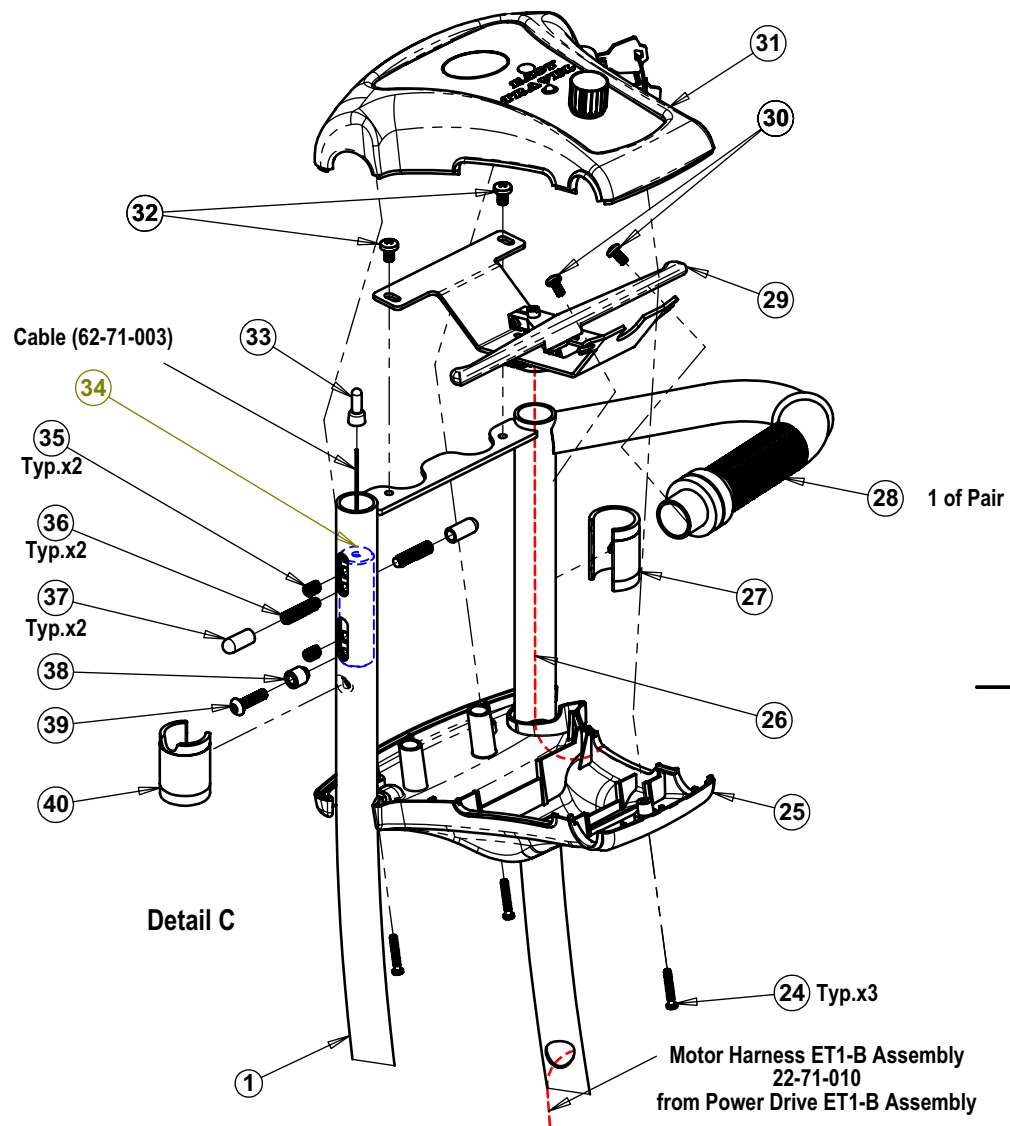
Name	Cat. No.	Tiller Frame Classic (Part No. 1)
Tiller Classic Assembly - Red	20-71-001	63-71-001
Tiller Classic Assembly - Blue	20-71-002	63-71-002
Tiller Classic Assembly - Silver	20-71-003	63-71-003

Do NOT scale from drawing.	Drawn		L.L.
Approved ONLY with stamp.	Checked		
	Production		
	Confirmed		
	Date	Name	
General Tolerances:			
	Holes Dia.	Linear	Angular
Date	Confirmed	Update	± mm. ± mm. ± °

Drawing No.			
<b>20-71-001a</b>	Tel: 972-3-5398999 Fax: 972-3-6320879 www.tzora.com		
Part Name:			
<b>Tiller Classic Assembly - Red/Blue/Silver</b>			
Date created	Scale	Sheet	Cat. No.
<b>20 May 2009</b>	<b>1:5</b>	<b>1 of 2</b>	<b>See Table</b>



Detail B



Detail C

Motor Harness ET1-B Assembly  
22-71-010  
from Power Drive ET1-B Assembly

- REMARKS:  
1. Some parts hidden for clarity.  
2. Route of cables.-----

Name	Cat. No.	Tiller Frame Classic (Part No. 1)
Tiller Classic Assembly - Red	20-71-001	63-71-001
Tiller Classic Assembly - Blue	20-71-002	63-71-002
Tiller Classic Assembly - Grey	20-71-003	63-71-003

Sheet <b>2</b> of <b>2</b>	Date <b>21 May 2009</b>	Scale <b>1:4</b>	General Tolerances:			Drawing No. <b>20-71-001a</b>	Cat. No. <b>See Table</b>	Part Name: <b>Tiller Classic Assembly - Red/Blue/Silver</b>
			Holes Dia. <b>± mm.</b>	Linear <b>± mm.</b>	Angular <b>± °</b>			

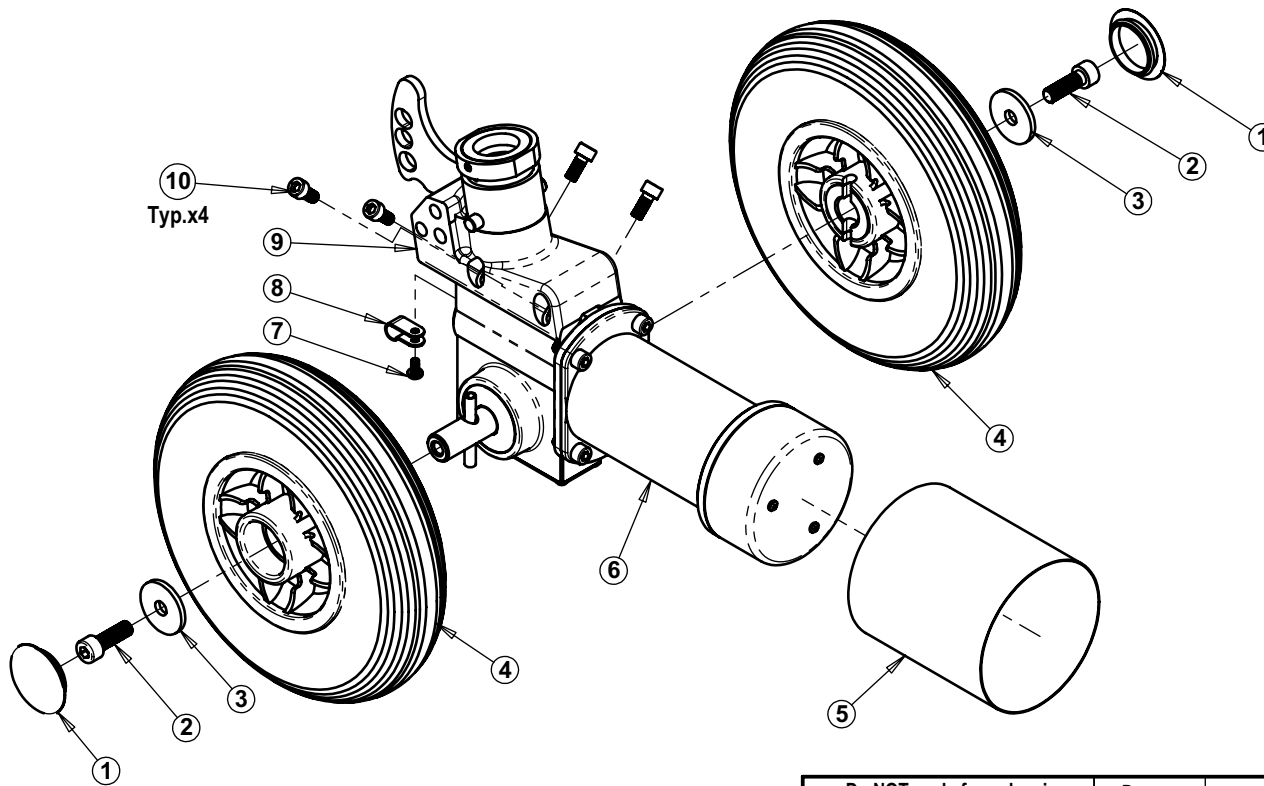

**TZORA**  
 Active Systems Ltd.


Tel: 972-3-5398999  
 Fax: 972-3-6320879  
 www.tzora.com

Item	Qty.	Cat No.	Description
1	2	62-00-012	Wheel Cap
2	2	74-02-003	Screw Allen M8x25 Galv.
3	2	74-12-002	Washer $\varnothing$ 8.5x $\varnothing$ 31x3
4	2	20-71-012	Front Wheel ET1-B Assembly
5	1	60-71-010	Shrink Cover $\varnothing$ 90x100
6	1	70-00-001	Power Unit
7	1	74-06-002	Screw Philips Pan Head M4x8 Black
8	1	60-71-001	Plastic Cable Clip
9	1	20-71-013	Quick Connector ET1-B Assembly
10	4	74-02-002	Screw Allen M6x14 Black 8.8
11	1	22-71-010	Motor Harness ET1-B Assembly

**REMARKS:**

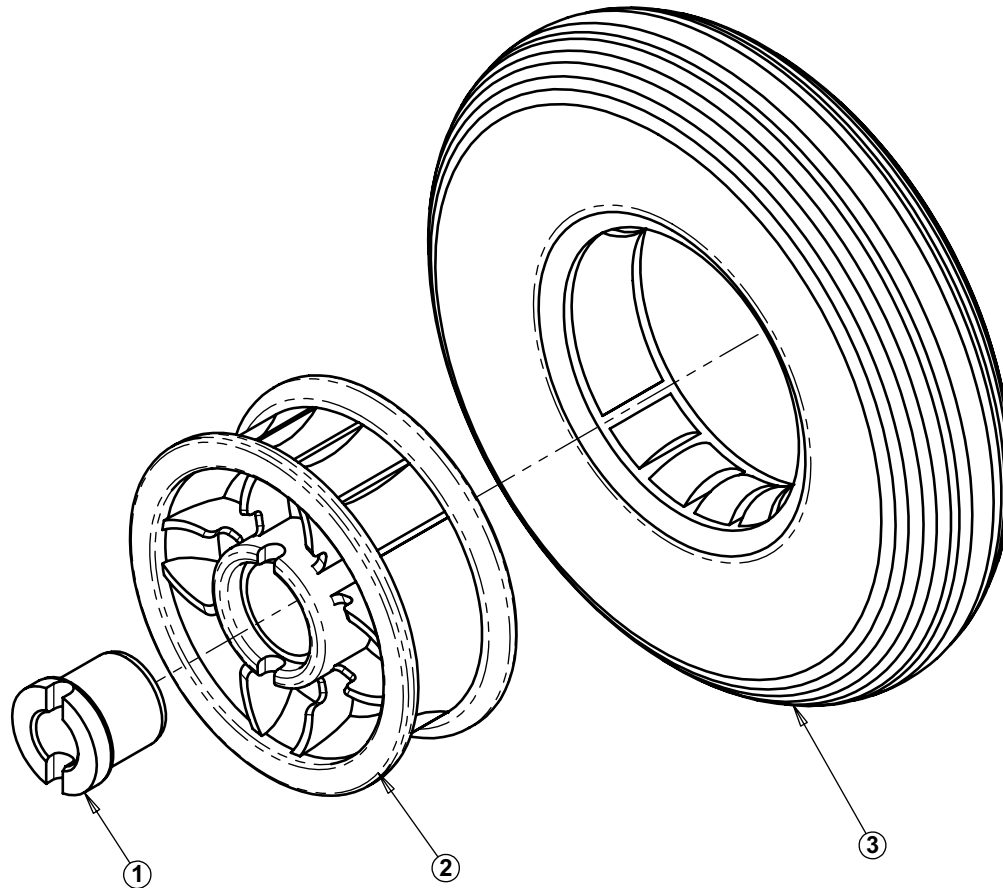
1. Motor Harness ET1-B Assembly NOT shown.




Do NOT scale from drawing.			Drawn		L.L.	Drawing No.		 <b>TZORA</b> Active Systems Ltd. <small>Tel: 972-3-5398999 Fax: 972-3-6320879 www.tzora.com</small>	
Approved ONLY with stamp.			Checked			<b>20-71-010a</b>			
			Production			Part Name:		<b>Power Drive ET1-B Assembly</b>	
			Confirmed			Date			
			General Tolerances:			Date created		Scale	
			Holes Dia.	Linear	Angular	27 May 2009		1:4	
Date	Confirmed	Update	$\pm$ mm.	$\pm$ mm.	$\pm$ °	1 of 1		Cat. No.	
						27 May 2009		20-71-010	

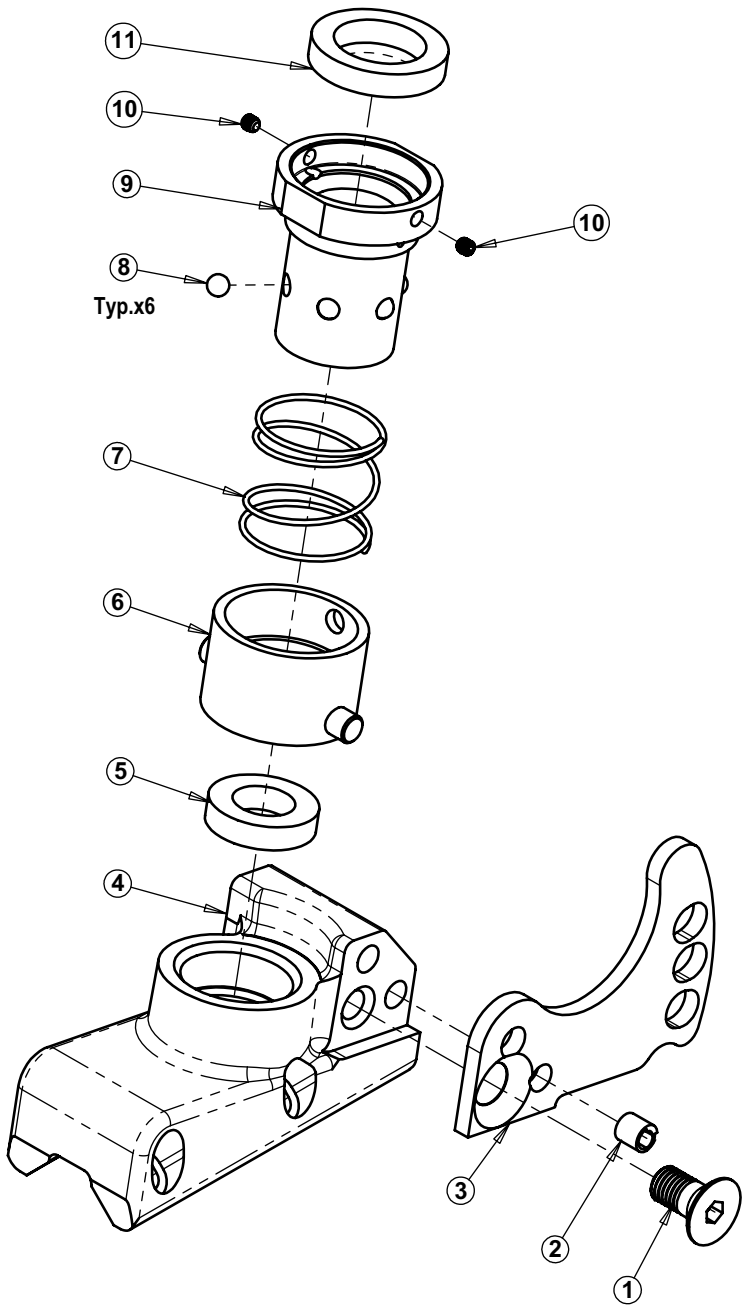
TAS A4H Primary.drwdot

Item	Qty.	Cat No.	Description
1	1	63-70-003	Front Wheel Adapter
2	1	62-71-011	Rim - Grey
3	1	67-71-001	Tire - Solid $\varnothing$ 200x50




<b>Do NOT scale from drawing.</b>			Drawn		<b>L.L.</b>	Drawing No.		 <b>TZORA</b> Active Systems Ltd. <small>Tel: 972-3-5398999 Fax: 972-3-6320879 www.tzora.com</small>				
<b>Approved ONLY with stamp.</b>			Checked			<b>20-71-012a</b>						
			Production			Part Name:		<b>Front Wheel - ET1-B Assembly</b>				
			Confirmed									
				<b>Date</b>	<b>Name</b>	General Tolerances:						
						Holes Dia.	Linear	Angular	Date created	Scale	Sheet	Cat. No.
Date	Confirmed	Update	$\pm$ mm.	$\pm$ mm.	$\pm$ °				<b>31 May 2009</b>	<b>1:2</b>	<b>1 of 1</b>	<b>20-71-012</b>

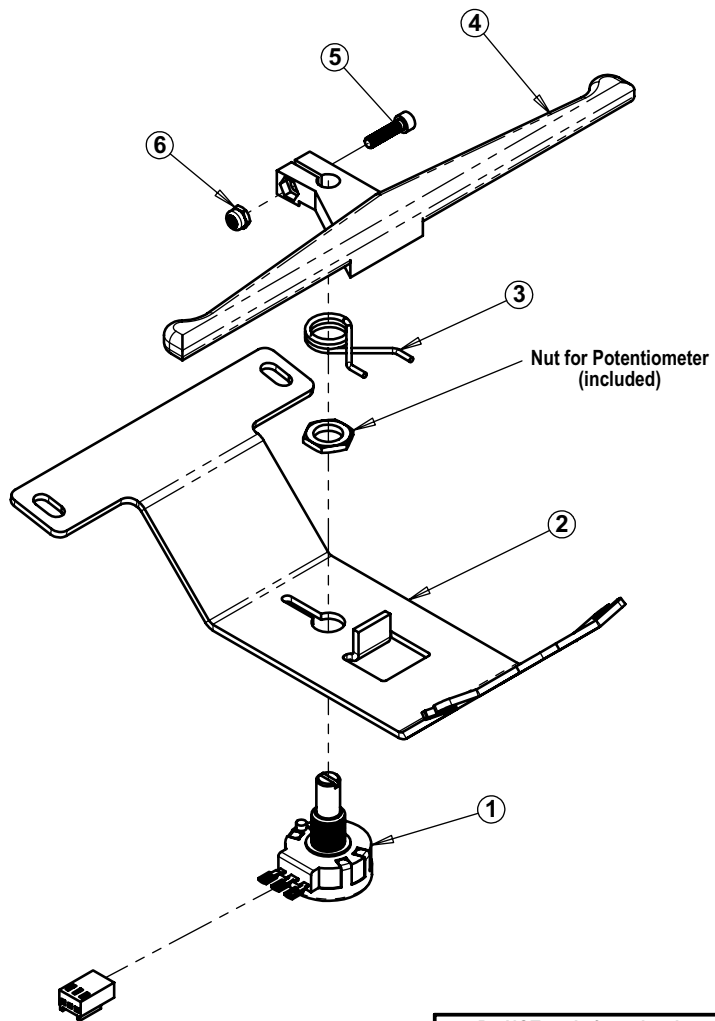
TAS A4H Primary.dwgdot




Item	Qty.	Cat No.	Description
1	1	74-04-001	Screw Allen Csk. Head M10x20 10.9
2	1	74-14-002	Spring Pin $\varnothing$ 8x16
3	1	63-71-010	Position Plate ET1-B
4	1	63-71-004	Quick Connector Adapter Block
5	1	66-70-001	Bearing 6903 ( $\varnothing$ 17x $\varnothing$ 30x7)
6	1	63-73-041	Quick Connector Sleeve
7	1	65-70-004	Spring for Quick Release
8	6	63-70-017	Ball $\varnothing$ 6
9	1	63-70-002	Quick Connector Support
10	2	74-08-002	Set Screw Allen M4x4 Black
11	1	66-70-002	Bearing 6805ZZ ( $\varnothing$ 25x $\varnothing$ 37x7)

Do NOT scale from drawing. Approved ONLY with stamp.			Drawn		L.L.	Drawing No.	 Tel: 972-3-5398999 Fax: 972-3-6320879 www.tzora.com		
			Checked			20-71-013a	Part Name:		
			Production				Quick Connector - ET1-B Assembly		
			Confirmed				Date created		
				Date	Name	Scale			
			General Tolerances:			Sheet			
			Holes Dia.	Linear	Angular	Cat. No.			
Date	Confirmed	Update	$\pm$ mm.	$\pm$ mm.	$\pm$ °	31 May 2009	1:2	1 of 1	20-71-013

TAS A4H Primary.drwdot



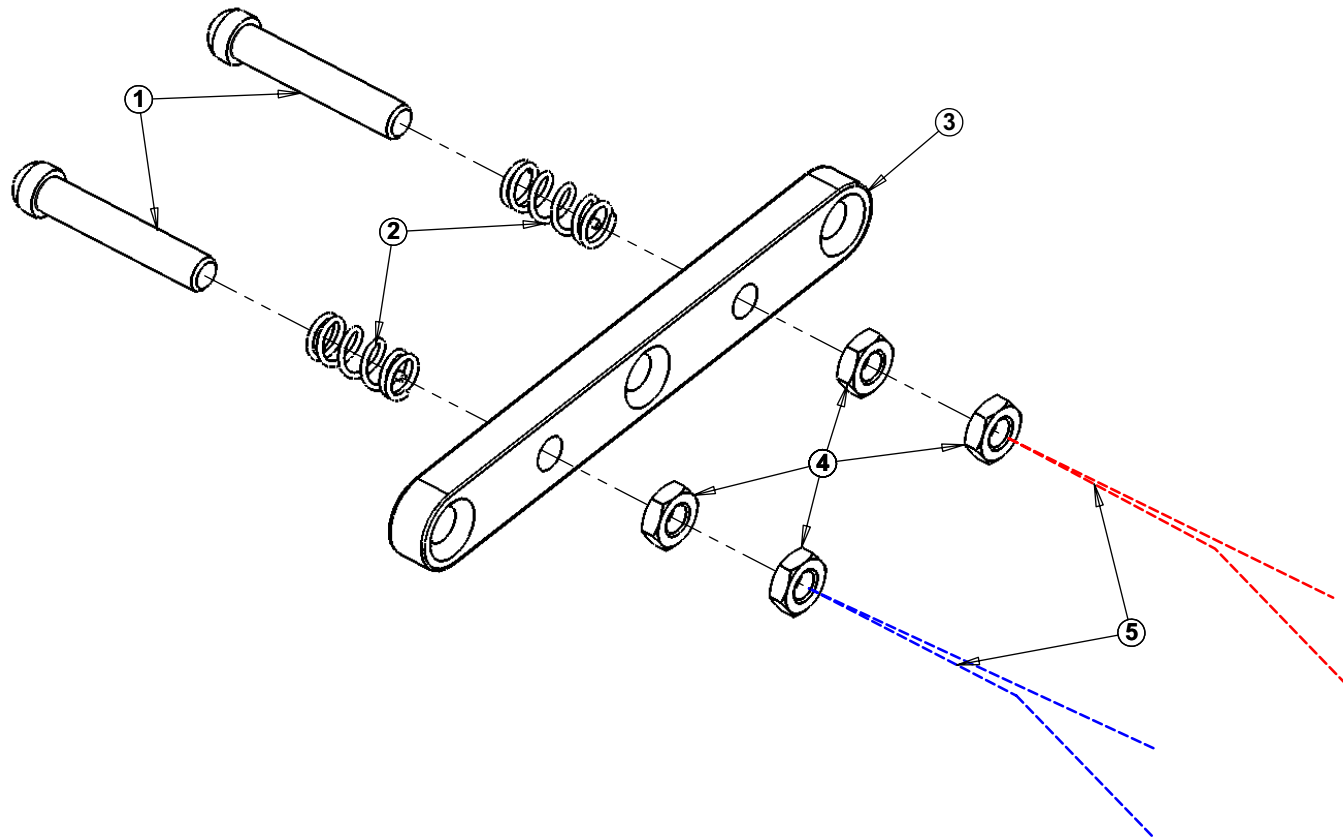
Item	Qty.	Cat No.	Description
1	1	22-71-013	Potentiometer 5K Assembly
2	1	63-070-030	Wig-wag Bracket ET1-B
3	1	65-70-005	Spring for Potentiometer 5K ET1-B
4	1	62-70-043	Wig-wag Lever
5	1	74-03-003	Screw Allen M3x12 Galv.
6	1	74-10-002	Nut Nylok M3 Galv.


Do NOT scale from drawing. Approved ONLY with stamp.			Drawn		L.L.	Drawing No.	 <b>TZORA</b> Active Systems Ltd. <small>Tel: 972-3-5398999 Fax: 972-3-6320879 www.tzora.com</small>					
			Checked			<b>20-70-014a</b>	Part Name:					
			Production				<b>Wig-wag Lever Assembly</b>					
			Confirmed									
				Date	Name	General Tolerances:						
						Holes Dia.	Linear	Angular	Date created	Scale	Sheet	Cat. No.
Date	Confirmed	Update	± mm.	± mm.	± °				<b>27 May 2009</b>	<b>1:2</b>	<b>1 of 1</b>	<b>20-70-014</b>

TAS A4H Primary.drw.dwt

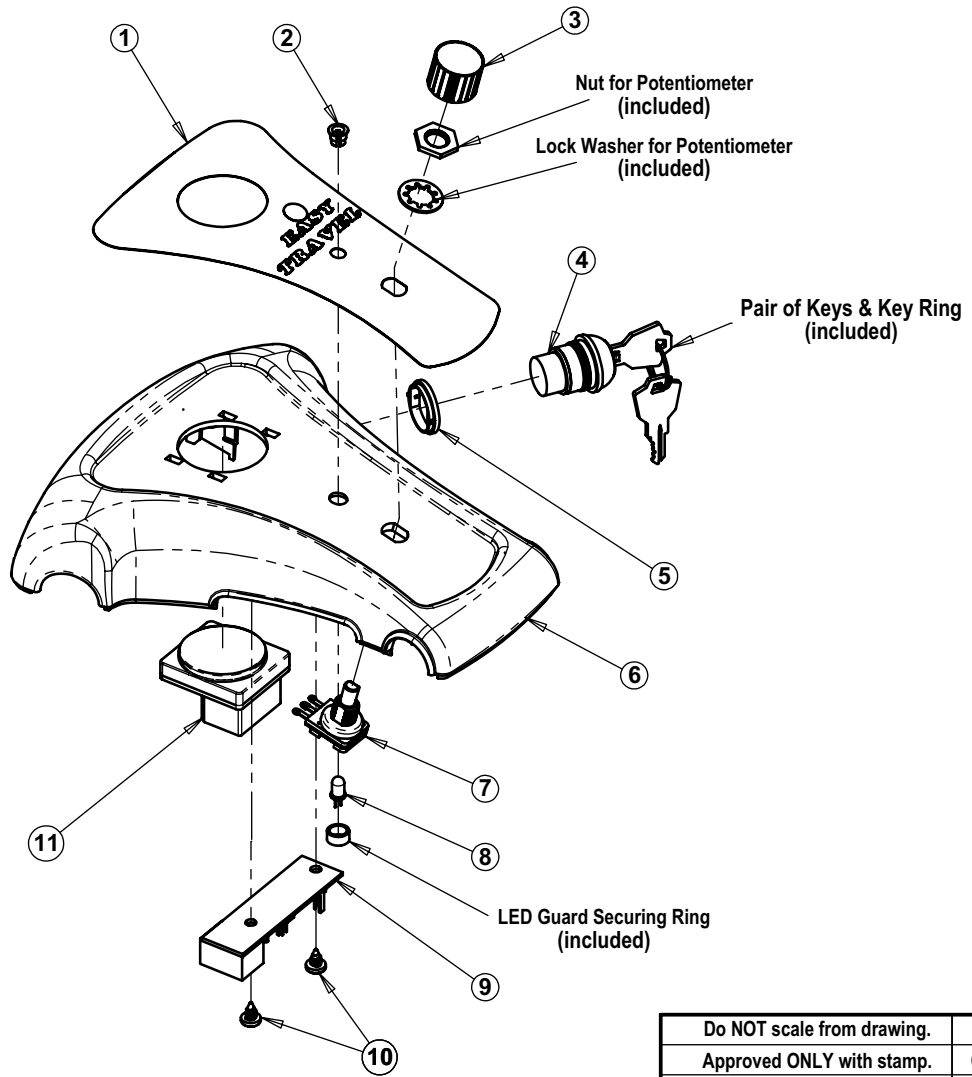


Item	Qty.	Cat No.	Description
1	2	63-00-003	Contact Pin - Brass
2	2	65-00-003	Spring for Contact Pin
3	1	62-00-001	Contact Pins Support
4	4	74-11-003	Nut M5 Galv.
5	1	22-71-012	Contact Pins Harness




Do NOT scale from drawing.			Drawn		L.L.	Drawing No.		 <b>TZORA</b> Active Systems Ltd. <small>Tel: 972-3-5398999 Fax: 972-3-6320879 www.tzora.com</small>	
Approved ONLY with stamp.			Checked			<b>22-70-013a</b>			
			Production			Part Name:		<b>Contact Pin Holder Assembly</b>	
			Confirmed			Date			
General Tolerances:									
			Holes Dia.	Linear	Angular	Date created	Scale	Sheet	Cat. No.
Date	Confirmed	Update	± mm.	± mm.	± °	<b>27 May 2009</b>	<b>1:1</b>	<b>1 of 1</b>	<b>22-70-013</b>

TAS A4H Primary.drw.dwt

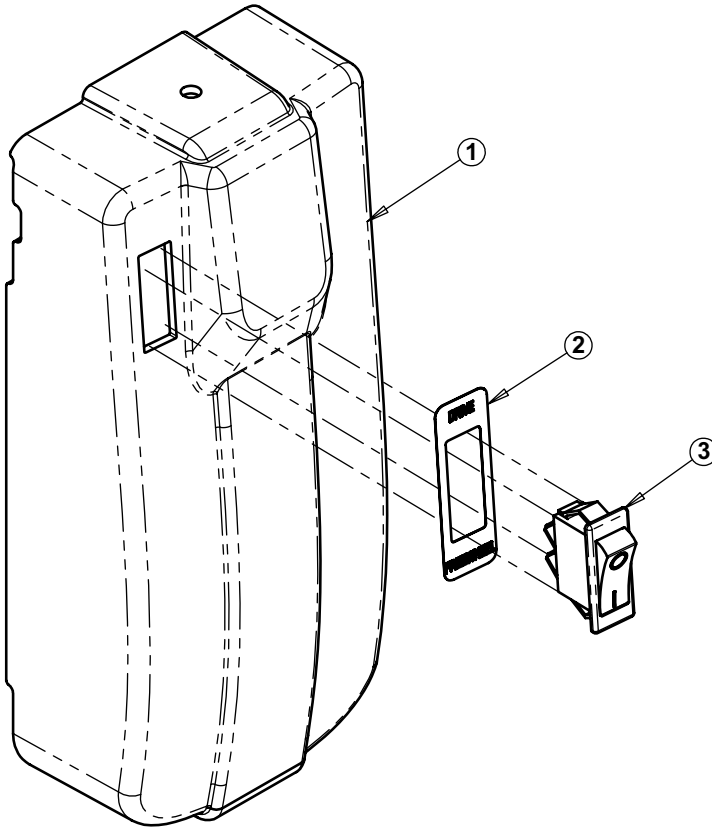


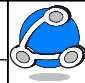
Item	Qty.	Cat No.	Description
1	1	60-70-024	Panel Label "Easy Travel"
2	1	60-00-005	LED Guard Ring
3	1	62-70-011	Knob for Potentiometer 22K
4	1	22-71-014	Key Switch Assembly
5	1	62-70-044	Key Switch Adapter Ring
6	1	62-70-041	Panel Top Cover
7	1	22-71-016	Potentiometer 22K Assembly
8	1	22-71-015	Indicating Light Assembly
9	1	60-70-024	Panel PCB
10	2	74-09-002	Screw Philips Pan Head Tapping ST2.9x8
11	1	22-71-017	Battery Meter Assembly

Do NOT scale from drawing.			Drawn		L.L.	Drawing No.		 Tel: 972-3-5398999 Fax: 972-3-6320879 www.tzora.com		
Approved ONLY with stamp.			Checked			22-70-012a				
			Production					Part Name:		
			Confirmed					Control Panel Assembly		
			Date			Name				
			General Tolerances:						Date created	
			Holes Dia.	Linear	Angular			Scale	Sheet	
Date	Confirmed	Update	± mm.	± mm.	± °	27 May 2009		1:3	1 of 1	
								Cat. No.		
								22-70-012		

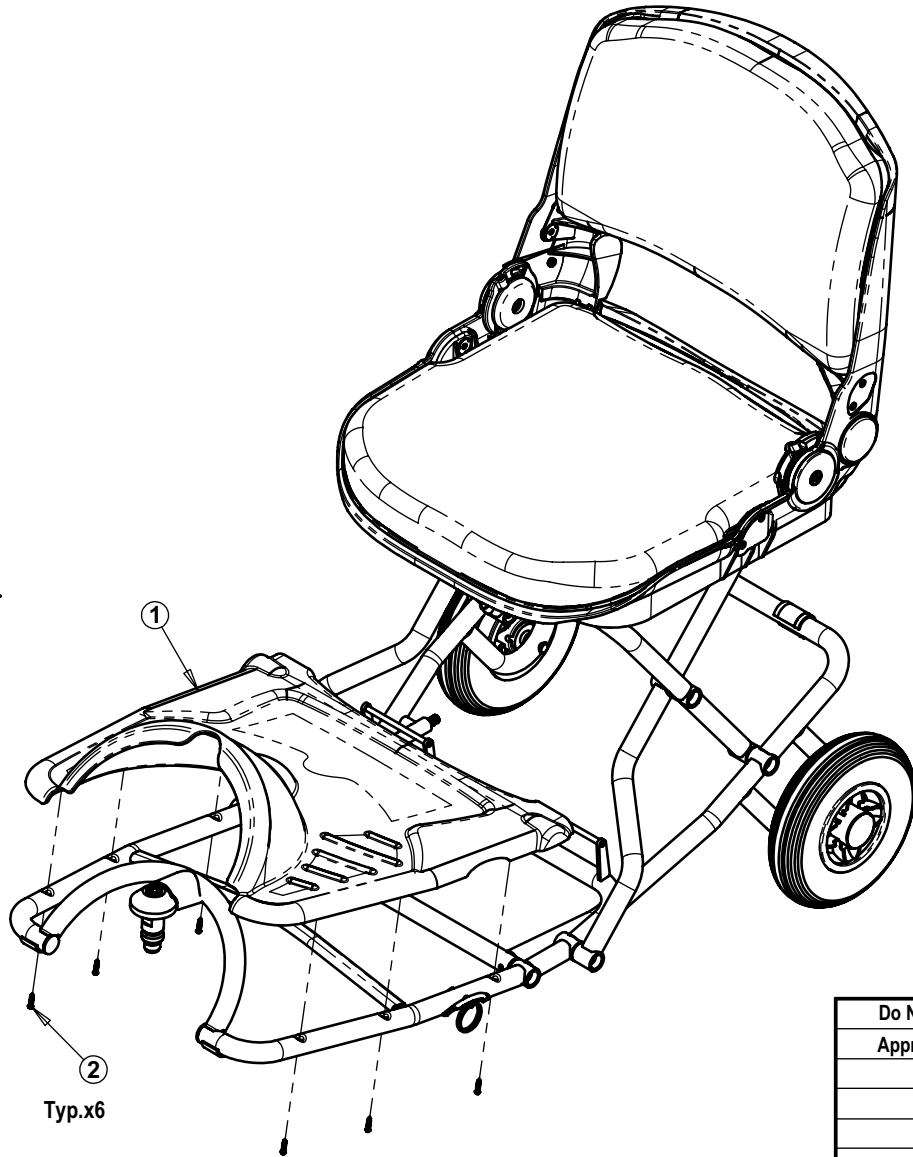
Item	Qty.	Cat No.	Description
1	1	62-70-013	Controller Cover
2	1	68-71-010	Sticker Drive/Freewheel
3	1	22-71-011	Switch Assembly - Free Wheel

REMARKS:  
1. Wiring not shown.




Do NOT scale from drawing.			Drawn		L.L.	Drawing No.		 <b>TZORA</b> Active Systems Ltd. <small>Tel: 972-3-5398999 Fax: 972-3-6320879 www.tzora.com</small>	
Approved ONLY with stamp.			Checked			<b>22-70-006a</b>			
			Production			Part Name:		<b>Controller Cover Assembly</b>	
			Confirmed						
				Date	Name				
General Tolerances:									
			Holes Dia.	Linear	Angular	Date created	Scale	Sheet	Cat. No.
Date	Confirmed	Update	± mm.	± mm.	± °	<b>27-May 2009</b>	<b>1:2</b>	<b>1 of 1</b>	<b>22-70-006</b>

TAS A4H Primary.drwdot

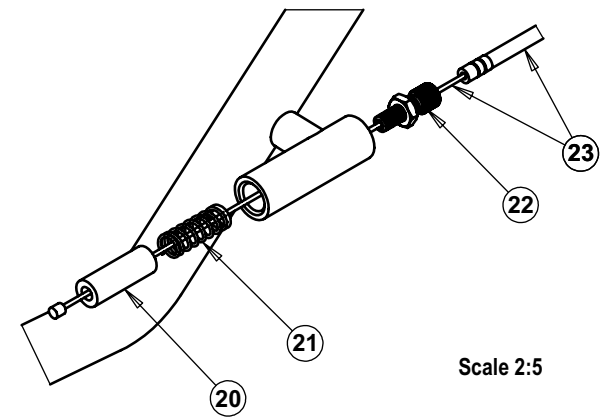
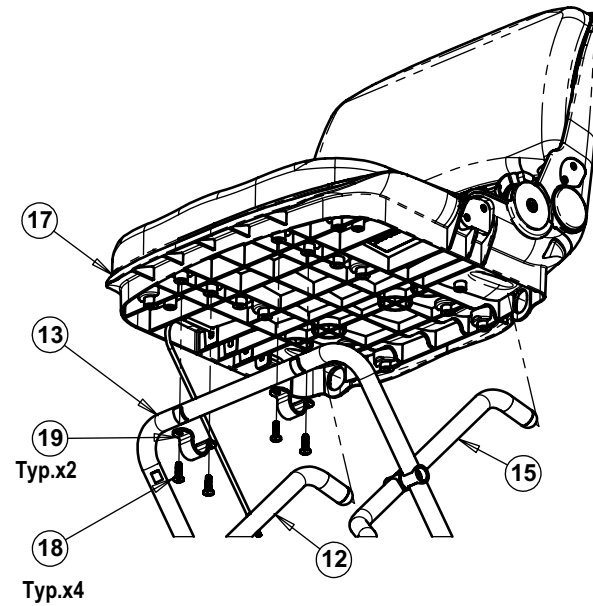
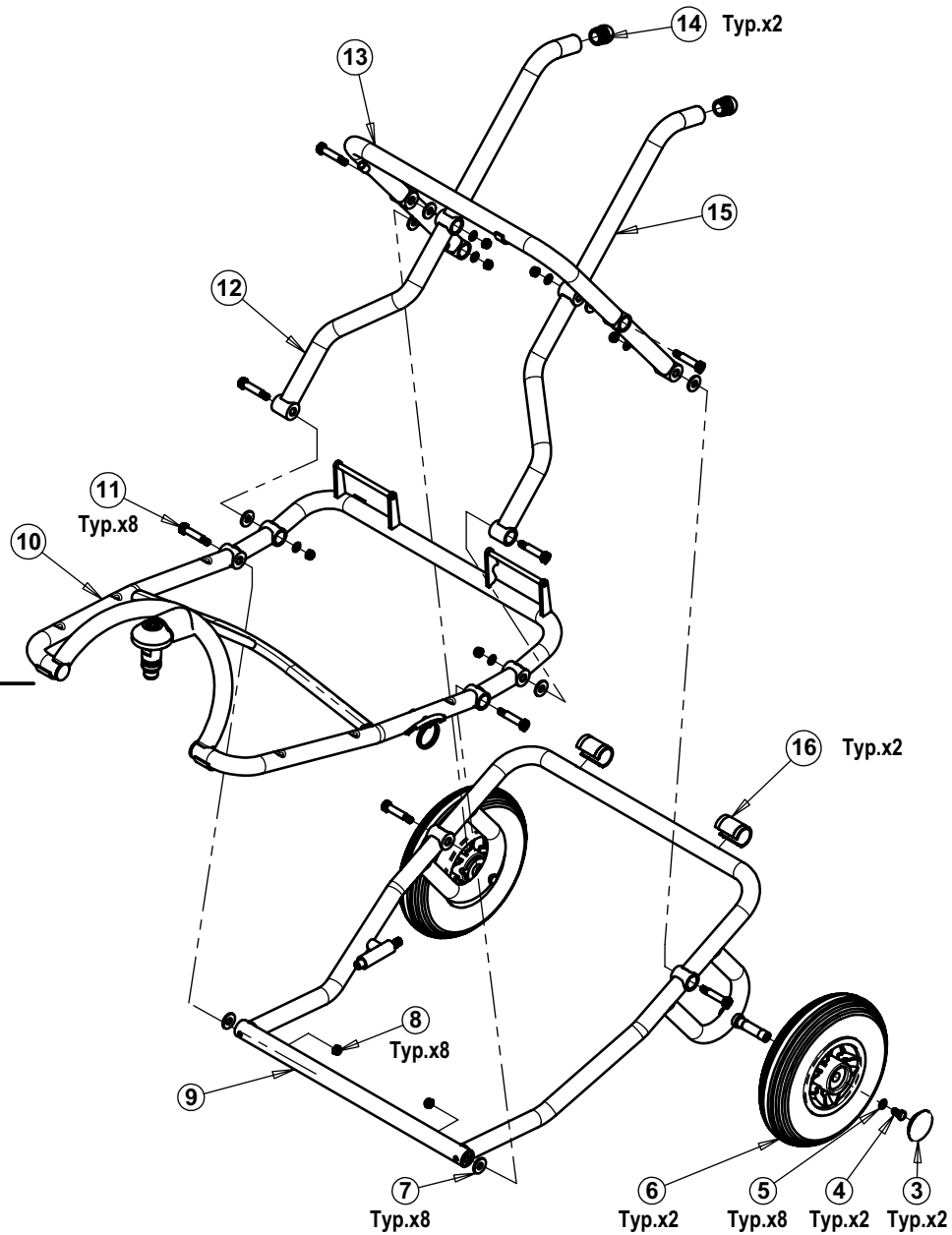



Item	Qty.	Cat No.	Description
1	1	62-71-001	Floor Pan ET1-B
2	6	74-09-001	Screw Philips Pan Head Tapping STT4.2x16
3	2	62-00-012	Wheel Cap
4	2	74-01-001	Screw Hex Head M6x12
5	8	74-12-001	Washer $\varnothing$ 6 Galv.
6	2	67-70-002	Rear Wheel ET1-B Assembly
7	8	62-70-032	Nylon Washer
8	8	74-10-001	Nut M6 Nylok Black Galv.
9	1	See Table	Rear Frame ET1-B - Red/Blue/Silver
10	1	See Table	Front Frame ET1-B - Red/Blue/Silver
11	8	74-05-001	Screw Allen Shoulder M6x $\varnothing$ 8x30
12	1	See Table	Seat Support - Right - Red/Blue/Silver
13	1	See Table	"U" Frame for Seat - Red/Blue/Silver
14	2	62-70-002	Black Plastic Stopper 22x1 Dome
15	1	See Table	Seat Support - Left - Red/Blue/Silver
16	2	62-70-005	Protector Clip - Full Circle
17	1	23-70-011	Seat Assembly
18	4	74-06-001	Screw Philips Pan Head M6x20 Black
19	2	63-70-027	Seat Bracket
20	1	63-70-006	Platform Locking Pin
21	1	65-00-002	Spring - Locking Pin
22	1	63-00-005	Adjustable Cable Stop (including nut)
23	1	62-70-055	Cable for Folding 920/780

Name	Cat. No.	Front Frame ET1-B Assembly (Part No. 10)	Rear Frame ET1-B (Part No. 9)	"U" Frame for Seat (Part No. 13)	Seat Support Left (Part No. 15)	Seat Support Right (Part No. 12)
Frame Classic Assembly - Red	20-71-004	20-71-014	63-73-711	63-70-731	63-70-741	63-70-751
Frame Classic Assembly - Blue	20-71-005	20-71-015	63-73-712	63-70-732	63-70-742	63-70-752
Frame Classic Assembly - Grey	20-71-006	20-71-016	63-73-713	63-70-733	63-70-743	63-70-753

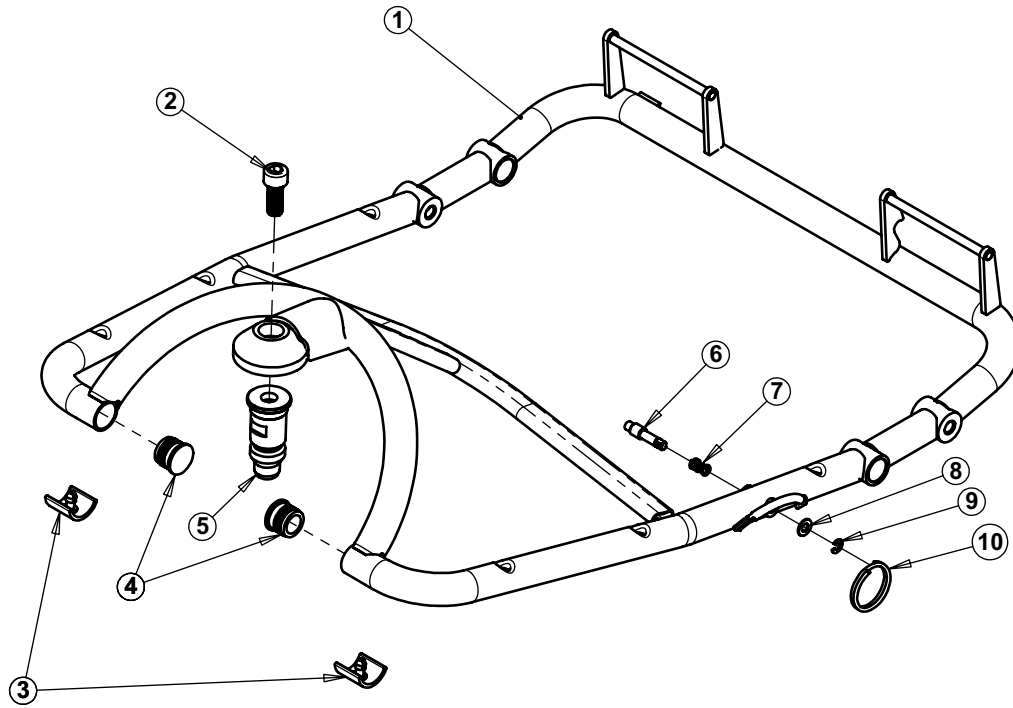
Do NOT scale from drawing.			Drawn		L.L.	Drawing No.				Tel: 972-3-5398999 Fax: 972-3-6320879 www.tzora.com
Approved ONLY with stamp.			Checked			20-71-004a				
			Production							
			Confirmed							
				Date	Name	Part Name:				
			General Tolerances:			Frame Classic Assembly - Red/Blue/Silver				
			Holes Dia.	Linear	Angular	Date created	Scale	Sheet	Cat. No.	
Date	Confirmed	Update	$\pm$ mm.	$\pm$ mm.	$\pm$ °	20 May 2009	1:8	1 of 2	See Table	

TAS A4H Primary.drwdoc




Sheet <b>2</b>	Date <b>25 May 2009</b>	Scale <b>1:9</b>	General Tolerances:			Drawing No. <b>20-71-004a</b>	Cat. No. <b>See Table</b>	Part Name: <b>Frame Classic Assembly - Red/Blue/Silver</b>	 <b>TZORA</b> Active Systems Ltd.
			Holes Dia. <b>± mm.</b>	Linear <b>± mm.</b>	Angular <b>± °</b>				

Item	Qty.	Cat No.	Description
1	1	See Table	Front Frame ET1-B - Red/Blue/Silver
2	1	74-002-20	Screw Allen M10x25 Black (12.9)
3	2	62-70-006	Protector Clip - Half Circle
4	2	62-70-003	Black Plastic Stopper 22x1
5	1	63-70-001	Quick Connector Pin
6	1	63-70-004	Folding Lock Pin
7	1	65-70-001	Folding Lock Spring
8	1	74-12-001	Washer $\varnothing 5$ - Nickel Plated
9	1	74-13-001	Washer Retaining $\varnothing 5$
10	1	65-70-002	Ring for Folding Lock

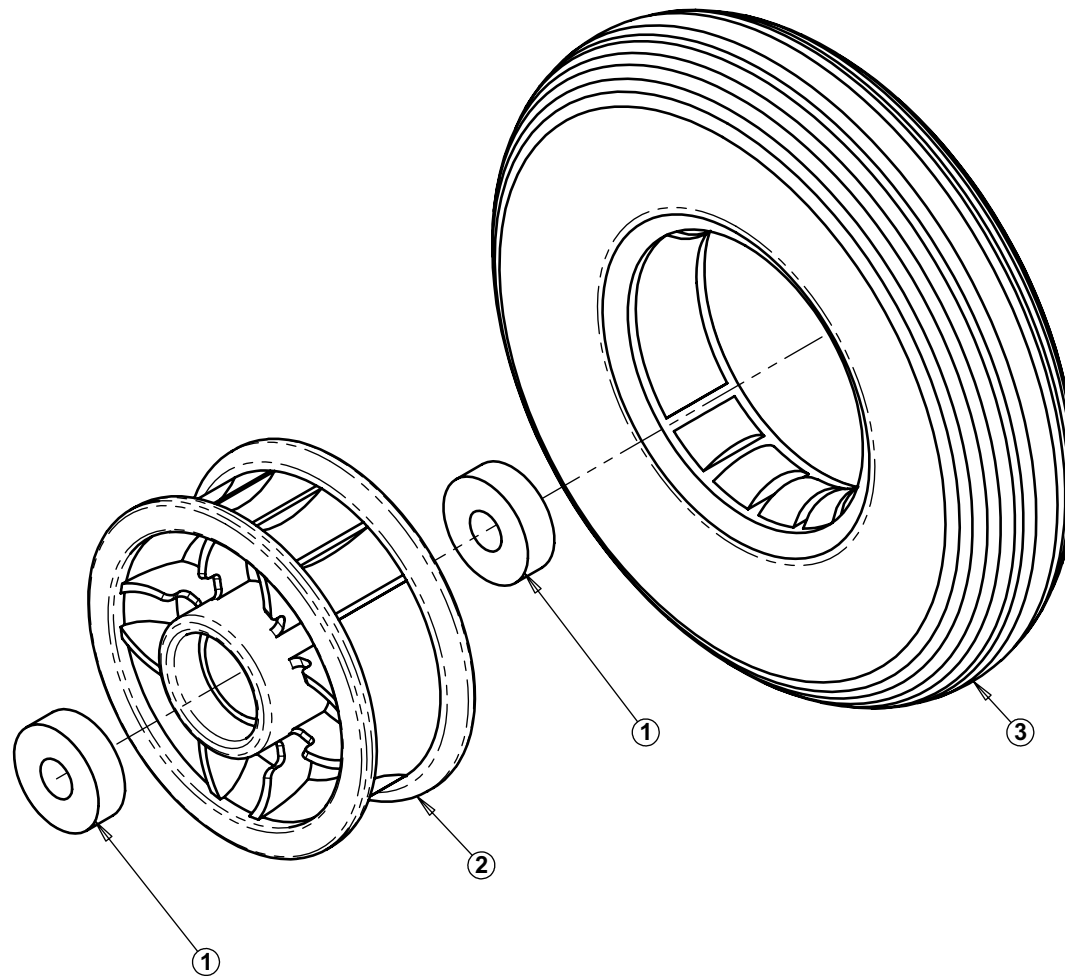



Name	Cat. No.	Front Frame ET1-B (Part No. 1)
Front Frame ET1-B Assembly - Red	20-71-014	63-71-721
Front Frame ET1-B Assembly - Blue	20-71-015	63-71-722
Front Frame ET1-B Assembly - Grey	20-71-016	63-71-723

Do NOT scale from drawing. Approved ONLY with stamp.			Drawn		L.L.	Drawing No.	 Tel: 972-3-5398999 Fax: 972-3-6320879 www.tzora.com															
			Checked			<b>20-71-014a</b>	Part Name:															
			Production				<b>Front Frame ET1-B Assembly - Red/Blue/Silver</b>															
			Confirmed				<table border="1"> <thead> <tr> <th colspan="3">General Tolerances:</th> <th>Date created</th> <th>Scale</th> <th>Sheet</th> <th>Cat. No.</th> </tr> </thead> <tbody> <tr> <td>Holes Dia.</td> <td>Linear</td> <td>Angular</td> <td>24 May 2009</td> <td>1:5</td> <td>1 of 1</td> <td>See Table</td> </tr> </tbody> </table>			General Tolerances:			Date created	Scale	Sheet	Cat. No.	Holes Dia.	Linear	Angular	24 May 2009	1:5	1 of 1
General Tolerances:			Date created	Scale	Sheet	Cat. No.																
Holes Dia.	Linear	Angular	24 May 2009	1:5	1 of 1	See Table																
Date	Confirmed	Update	$\pm$ mm.	$\pm$ mm.	$\pm$ °																	

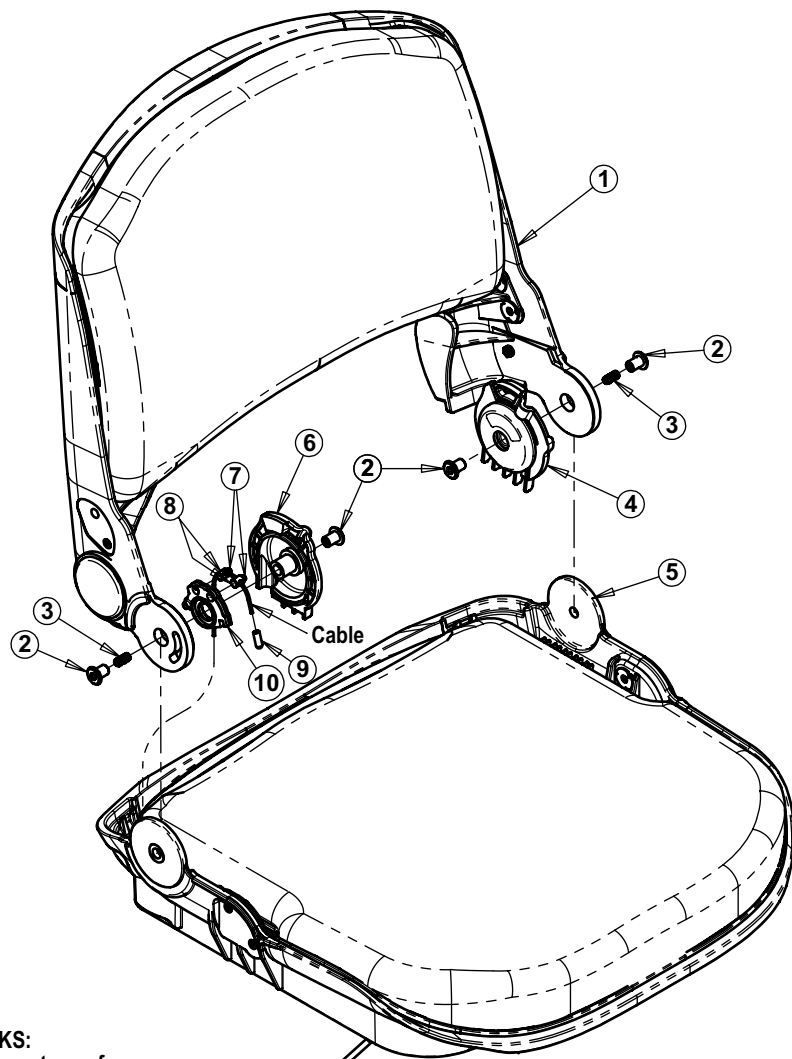
TAS A4H Primary.drwdot

Item	Qty.	Cat No.	Description
1	2	66-71-001	Bearing 6201-2RS
2	1	62-71-011	Rim - Grey
3	1	67-71-001	Tire - Solid $\phi$ 200x50



<b>Do NOT scale from drawing.</b>			Drawn		<b>L.L.</b>	Drawing No.		 <b>TZORA</b> Active Systems Ltd. <small>Tel: 972-3-5398999 Fax: 972-3-6320879 www.tzora.com</small>	
<b>Approved ONLY with stamp.</b>			Checked			<b>67-70-002a</b>			
			Production			Part Name:		<b>Rear Wheel ET1-B Assembly</b>	
			Confirmed			Date			
General Tolerances:									
			Holes Dia.	Linear	Angular	Date created	Scale	Sheet	Cat. No.
Date	Confirmed	Update	$\pm$ mm.	$\pm$ mm.	$\pm$ °	<b>31 May 2009</b>	<b>1:2</b>	<b>1 of 1</b>	<b>67-70-002</b>

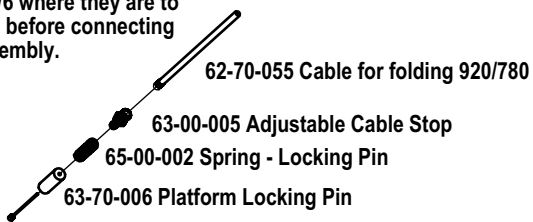
TAS A4H Primary.drwdoc




Item	Qty.	Cat No.	Description
1	1	20-76-013	Backrest Assembly
2	4	74-11-004	Nut Flat Cap M6 Black Galv.
3	2	74-08-001	Set Screw Allen M6x14 Black Galv.
4	1	62-70-052	Seat Axis Cover - Left
5	1	20-76-014	Seat Assembly
6	1	62-70-053	Seat Axis Cover - Right
7	2	74-08-007	Set Screw Allen M4x6
8	2	63-70-028	Cable Bolt
9	1	60-75-005	Close End Wire Terminal
10	1	62-70-051	Seat Cable Puller
11	1	20-76-015	Armrest Right Assembly
12	4	74-12-003	Washer Ø 6 Black Galv.
13	4	74-03-004	Screw Allen Button Head M5x10 Black Galv.
14	2	62-70-902	Armrest Axis Bushing
15	2	74-14-001	Roll Pin Ø 4x22 Stainless
16	2	63-70-092	Vertical External Tube
17	1	38-70-922	Armrest Back Connector - Right
18	4	74-03-002	Screw Allen Button Head M6x10 Black Galv.
19	2	63-70-925	Pivot Pin - Back
20	2	62-70-901	Vertical Inner Armrest
21	2	63-70-926	Pivot Pin - Bottom
22	4	74-03-009	Screw Allen Button Head M6x14 Black Galv.
23	1	38-70-920	Armrest Connector - Right
24	1	38-70-921	Armrest Connector - Left
25	1	38-70-923	Armrest Back Connector - Left
26	1	20-76-016	Armrest Left Assembly

**REMARKS:**

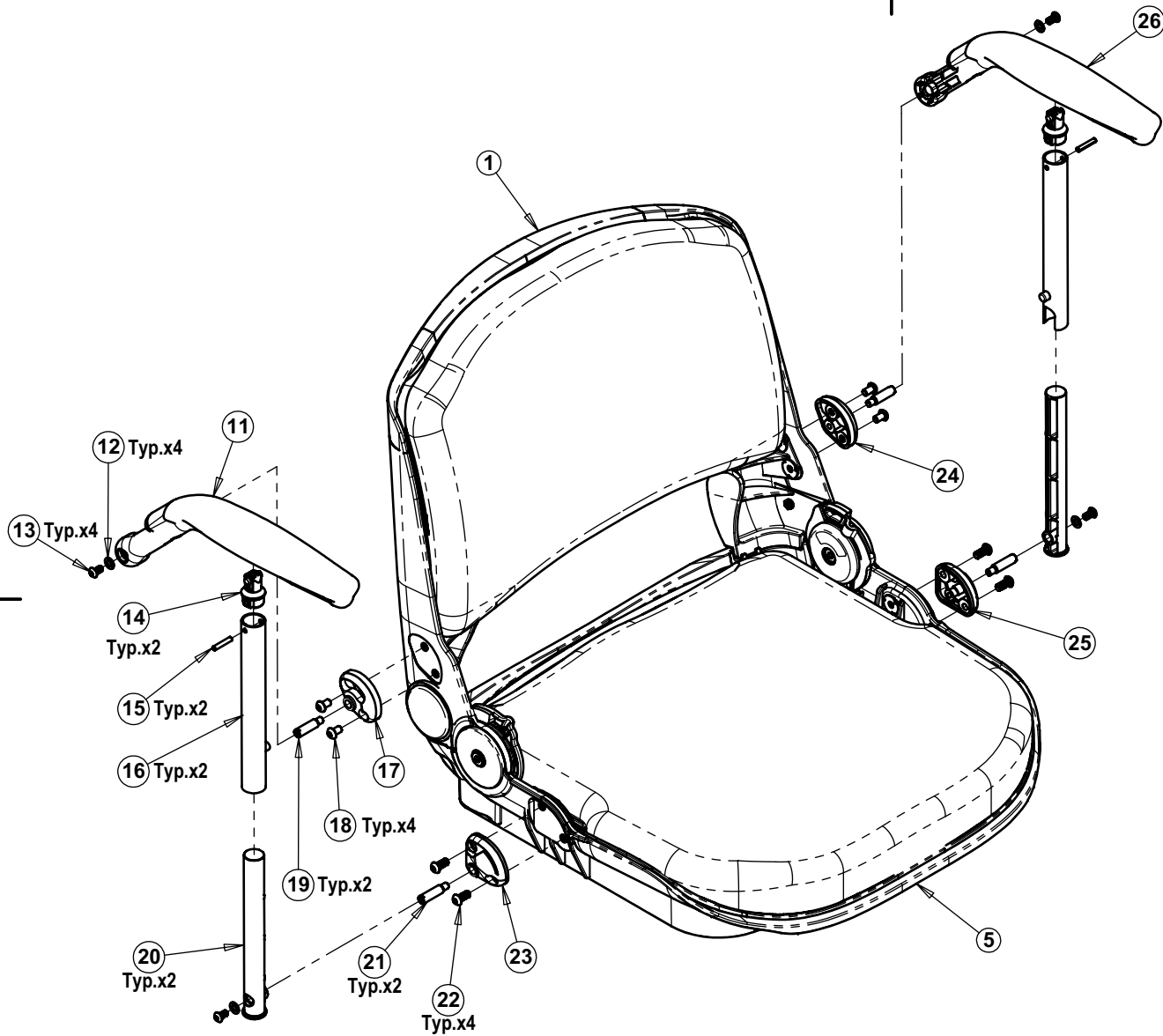
1. These parts are from 20-71-004/5/6 where they are to be attached before connecting to Seat Assembly.



Do NOT scale from drawing.			Drawn		L.L.	Drawing No.		 <b>TZORA</b> Active Systems Ltd. <small>Tel: 972-3-5398999 Fax: 972-3-6320879 www.tzora.com</small>	
Approved ONLY with stamp.			Checked			<b>23-70-011a</b>		Part Name:	
			Production					<b>Seat Assembly</b>	
			Confirmed						
				Date	Name				
			General Tolerances:						
			Holes Dia.	Linear	Angular	Date created	Scale	Sheet	Cat. No.
Date	Confirmed	Update	± mm.	± mm.	± °	<b>27 May 2009</b>	<b>1:6</b>	<b>1 of 2</b>	<b>23-70-011</b>

TAS A4H Primary.drwdot

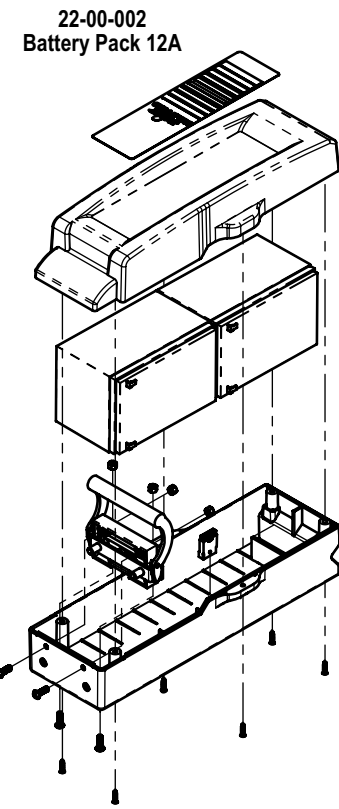
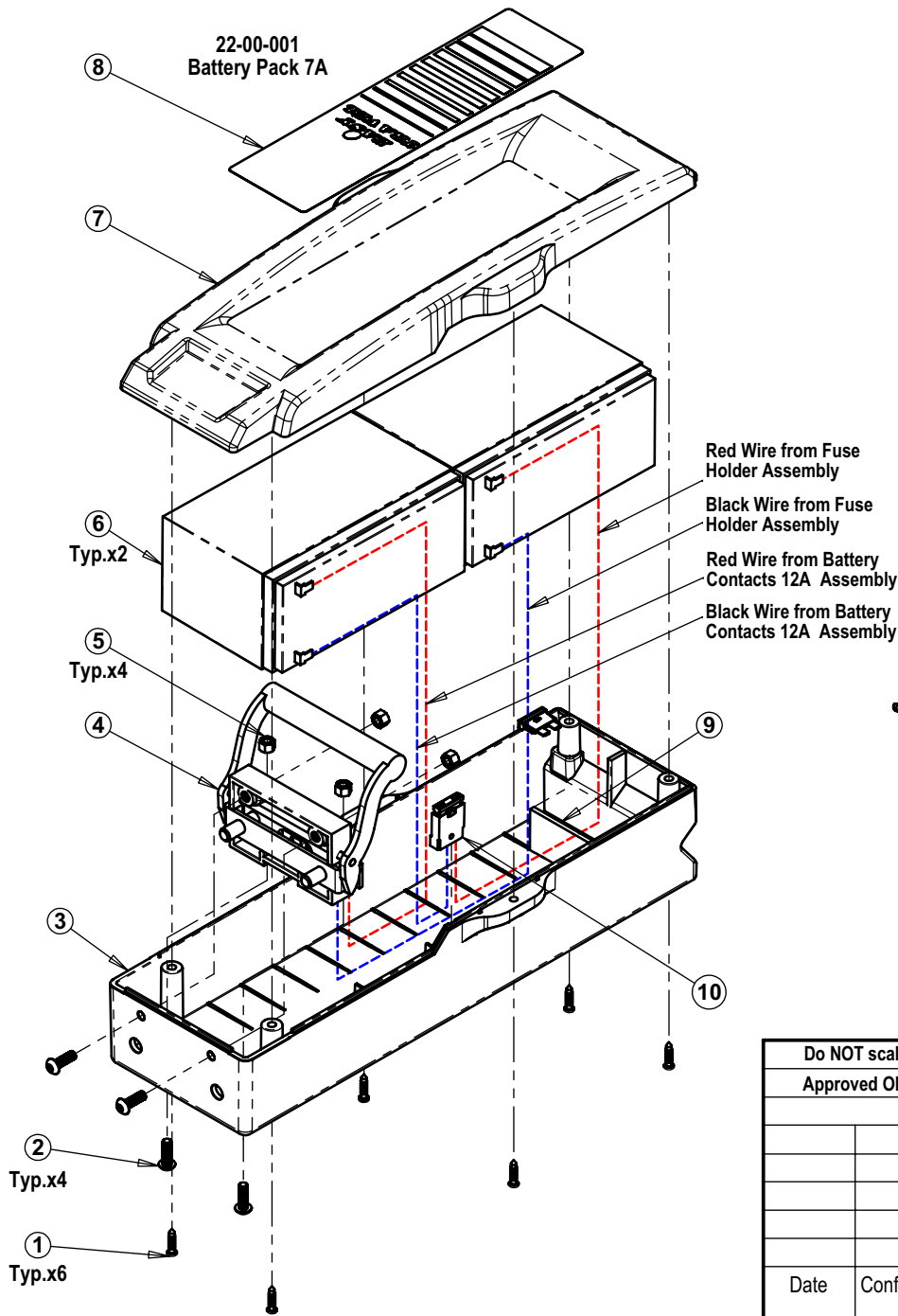




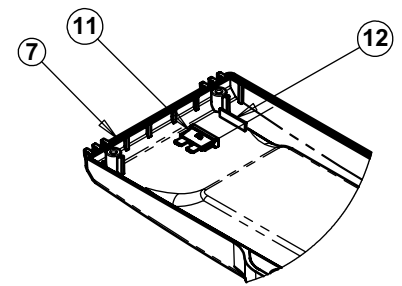
Sheet <b>2</b>	Date <b>27 May 2009</b>	Scale <b>1:6</b>	General Tolerances:			Drawing No. <b>23-70-011a</b>	Cat. No. <b>23-70-011</b>	Part Name: <b>Seat Assembly</b>
			Holes Dia. <b>± mm.</b>	Linear <b>± mm.</b>	Angular <b>± °</b>			



Tel: 972-3-5398999  
Fax: 972-3-6320879  
www.tzora.com



Spare Fuse



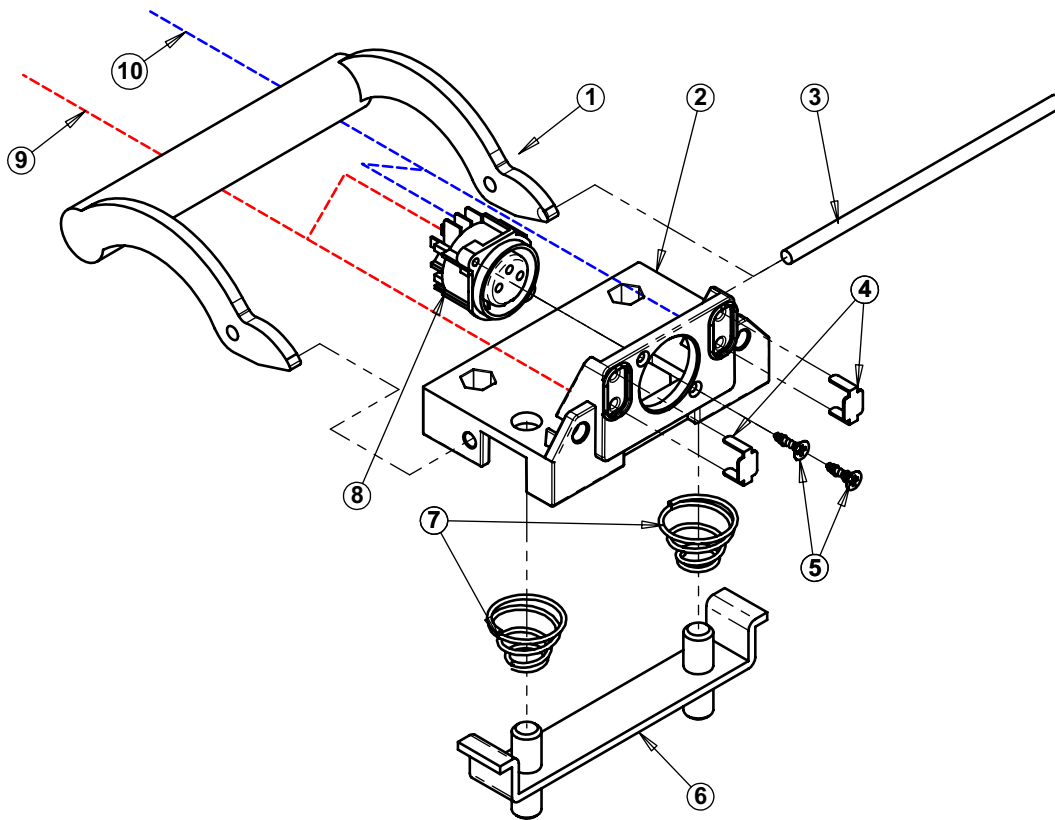
Scale 1:4

Item	Qty.	Cat No.	Description
1	6	74-09-001	Screw Philips Pan Head ST 4.2x20
2	4	74-03-001	Screw Allen Button Head M5x16 Black
3	1	62-00-501	Battery Case
4	1	See Table	Battery Contacts 7A Assembly
5	4	74-11-003	Nut M5 Galv.
6	2	See Table	Battery 12V 7A
7	1	See Table	Battery Cover for 7A
8	1	68-70-507	Label for Battery Cover (Easy Travel)
9	1	62-00-505	Cushion to Battery Case 28x60x3
10	1	20-71-008	Fuse Holder Assembly
11	1	60-00-501	Fuse Flat 20A
12	1	69-00-028	Adhesive 4941 - 3/4" VHBx5.0


Name	Cat. No.	Battery Contacts Assembly (Part No. 4)	Battery 12V (Part No. 6)	Battery Cover (Part No. 7)
Battery Pack 7A Assembly	22-00-001	20-71-009	61-00-002	62-00-502
Battery Pack 12A Assembly	22-00-002	20-71-007	61-00-001	62-00-503

Do NOT scale from drawing.			Drawn		L.L.
Approved ONLY with stamp.			Checked		
			Production		
			Confirmed		
			Date	Name	
General Tolerances:					
			Holes Dia.	Linear	Angular
Date	Confirmed	Update	± mm.	± mm.	± °

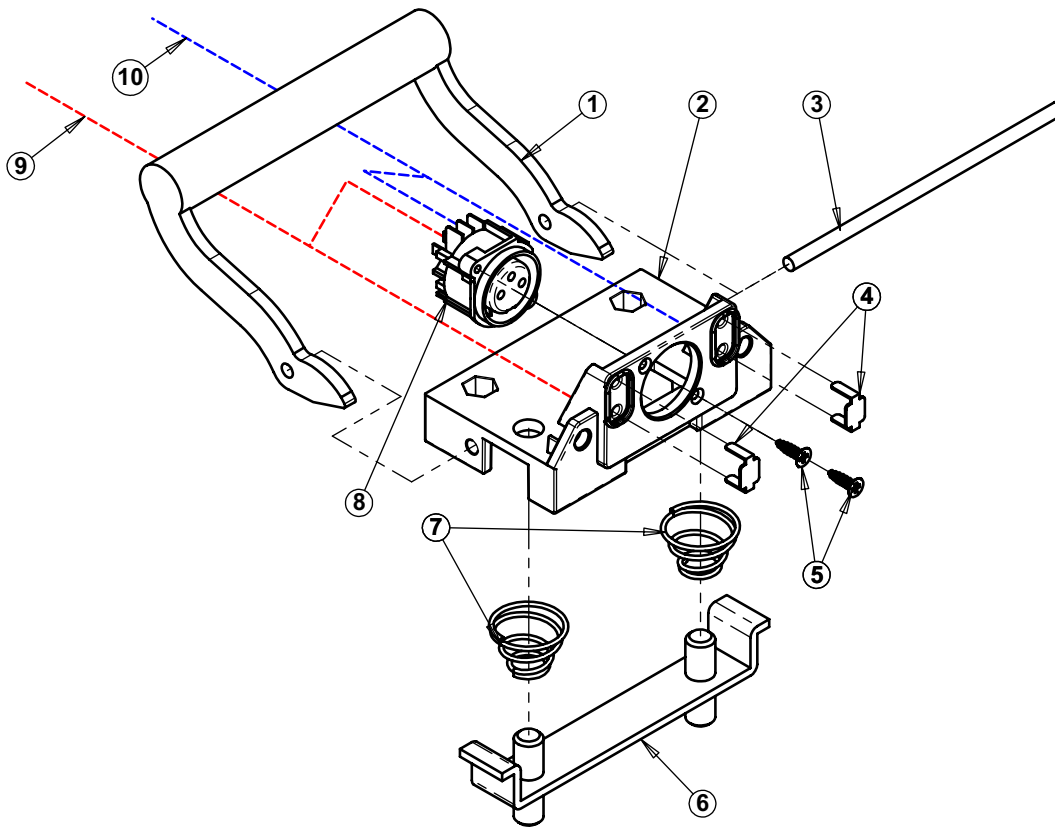
Drawing No.				Tel: 972-3-5398999	
22-00-001a				Fax: 972-3-6320879	
Part Name:					
Battery Pack 7A& 12A Assembly					
Date created	Scale	Sheet	Cat. No.		
26 May 2009	1:4	1 of 1	22-00-001		




Item	Qty.	Cat No.	Description
1	1	63-00-505	Battery Handle for 12A
2	1	62-00-504	Battery Contact Housing
3	1	63-00-502	Battery Pivot $\varnothing 4 \times 101.5$
4	2	63-00-501	Battery Contact
5	2	74-16-001	Screw Philips Csk. Head ST2.9x10
6	1	63-00-503	Locking Pin Bridge
7	2	65-00-501	Spring - Cone for Battery Housing
8	1	60-00-504	Charging Socket 3P
9	1	22-71-018	Battery Harness - Red
10	1	22-71-019	Battery Harness - Black

Do NOT scale from drawing.			Drawn		L.L.	Drawing No.		 <b>TZORA</b> Active Systems Ltd. <small>Tel: 972-3-5398999 Fax: 972-3-6320879 www.tzora.com</small>	
Approved ONLY with stamp.			Checked			<b>20-71-007a</b>			
			Production						
			Confirmed						
				Date	Name	Part Name:			
			General Tolerances:			<b>Battery Contacts 12A Assembly</b>			
			Holes Dia.	Linear	Angular	Date created	Scale	Sheet	Cat. No.
Date	Confirmed	Update	$\pm$ mm.	$\pm$ mm.	$\pm$ °	<b>27 May 2009</b>	<b>1:2</b>	<b>1 of 1</b>	<b>20-71-007</b>

TAS A4H Primary.drwdoc

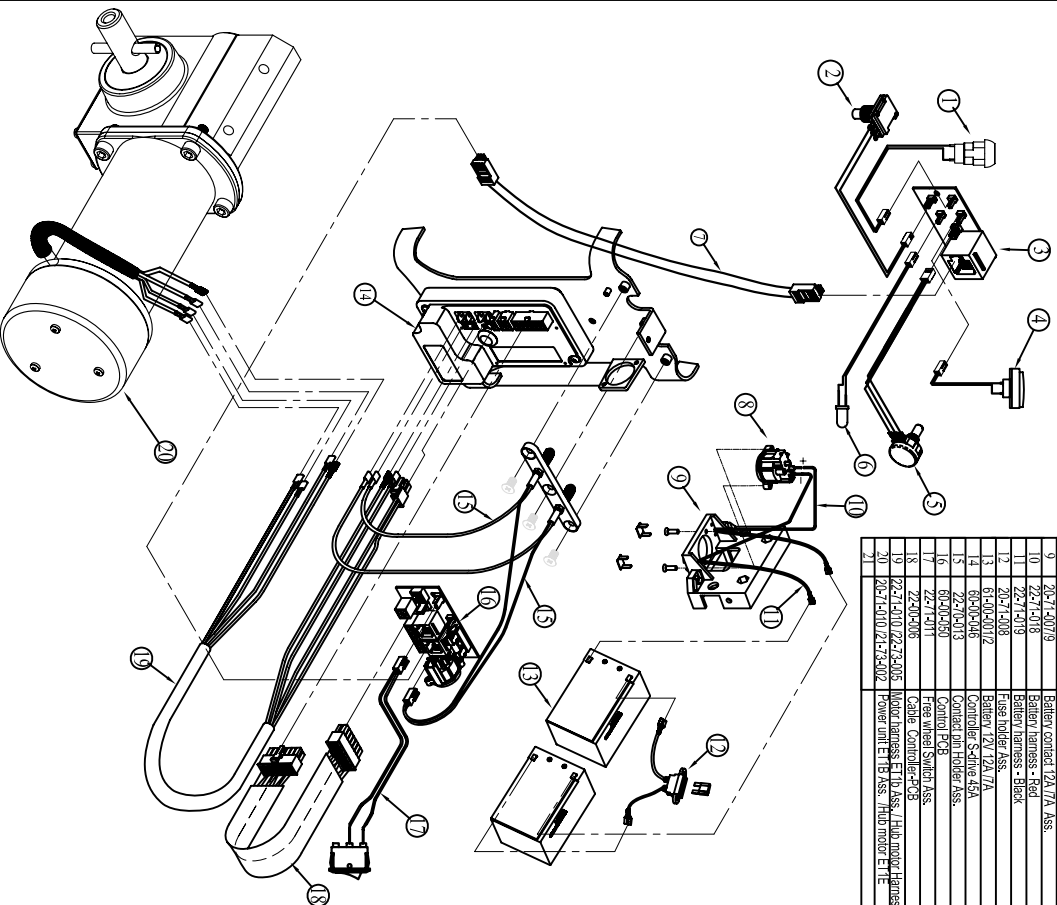


Item	Qty.	Cat No.	Description
1	1	63-00-504	Battery Handle for 7A
2	1	62-00-504	Battery Contact Housing
3	1	63-00-502	Battery Pivot $\varnothing 4 \times 101.5$
4	2	63-00-501	Battery Contact
5	2	74-16-001	Screw Philips Csk. Head ST2.9x10
6	1	63-00-503	Locking Pin Bridge
7	2	65-00-501	Spring - Cone for Battery Housing
8	1	60-00-504	Charging Socket 3P
9	1	22-71-018	Battery Harness - Red
10	1	22-71-019	Battery Harness - Black

Do NOT scale from drawing.			Drawn		L.L.	Drawing No.				Tel: 972-3-5398999
Approved ONLY with stamp.			Checked			20-71-009a				Fax: 972-3-6320879
			Production							www.tzora.com
			Confirmed							
				Date	Name	Part Name:				
			General Tolerances:			Battery Contacts 7A Assembly				
			Holes Dia.	Linear	Angular	Date created	Scale	Sheet	Cat. No.	
Date	Confirmed	Update	$\pm$ mm.	$\pm$ mm.	$\pm$ °	26 May 2009	1:2	1 of 1	20-71-009	

TAS A4H Primary.drw.dwt

2	22-71-1014	New switch ass. (unit rev)
3	62-00-0000	Control/runner 2Xk Ass.
4	22-71-4017	Pin holder Ass.
5	22-71-4013	Positioner 4K Ass.
6	22-71-4015	Indicator light Ass.
7	60-16-5008	Flat cable 8L45 8P L=470
8	60-00-5004	Clamping socket 3P
9	20-71-4007/9	Battery contact 12V/7A Ass.
10	22-71-4018	Battery harness - Red
11	22-71-4019	Battery harness - Black
12	20-71-4008	Fuse holder Ass.
13	61-00-4001/2	Battery 12V/12A/7A
14	60-00-0046	Controller-Drive 48A
15	22-70-4013	Control pin Holder Ass.
16	60-00-0030	Control PCB
17	22-71-4011	Flap wheel switch Ass.
18	22-00-0006	Cable Controller+CS
19	22-71-1010/22-72-3008	Motor harness F1 to ass. 11to motor/harness ass.
20	25-71-1010/25-72-3002	F over unit ET1B Ass. 7to motor ET1E
21		



ET1B - Classic + ET1E - Elite Electric System Drawing	
设计 (Version)	审核 (Date)
设计	标准
校对	审定
审核	批准
工艺	日期
	2008/11/19
Tzora Active System	
S	1
	(P1/A)

# Classic S-Drive Controller Parameter

Speed Settings		Fast	Slow
Forward Acceleration (0.1 Seconds)	30	30	
Forward Deceleration (0.1 Seconds)	8	6	
Reverse Acceleration (0.1 Seconds)	30	30	
Reverse Deceleration (0.1 Seconds)	12	12	
Max Forward Speed (%)	100	100	
Min Forward Speed (%)	30	30	
Max Reverse Speed (%)	45	45	
Min Reverse Speed (%)	30	30	
Speed Limit Pot Enabled	Off	Off	

Operation Settings	
Sleep Timer (Minutes)	10
Throttle Invert	No

Battery Settings	
Low Battery Flash Level (Bars)	2
Cable Resistance (milli-Ohms)	40
Callbration Factor	105
Low Battery Alarm	Off

Inhibit Settings	
Inhibit 1: Mode	1
Inhibit 1: Operation	Latching
Inhibit 1: Speed (%)	0
Inhibit 2: Mode	1
Inhibit 2: Operation	Latching
Inhibit 2: Speed (%)	0
Inhibit 3: Mode	1
Inhibit 3: Operation	Non-Latching
Inhibit 3: Speed (%)	0

Factory Settings		Max	Min
Acceleration (0.1 Seconds)	100	1	
Deceleration (0.1 Seconds)	100	1	
Forward Speed (%)	100	0	
Reverse Speed (%)	100	0	

General Settings		On
Soft Stop		On
Brake Time (milli-Seconds)		1000
Output Voltage (Volts)		24
Status Output Type		0
Diagnostic Flash Sequence		2
Reverse Alarm		Off
Pulsed Reverse Alarm		Off
Diagnostic Alarm		Off
Brake Disconnected Alarm		Off
Brake Fault Detect		On
Brake Light		Off
Freewheel Speed Limit		100
Freewheel Time Out (0.01 Seconds)		20
Freewheel Enable		Enable

Motor Settings	
Current Limit Max (Amps)	25
Boost Drive Current (Amps)	30
Boost Drive Time (Seconds)	5
Current Foldback Threshold (Amps)	20
Current Foldback Time (Seconds)	255
Current Foldback Level (%)	90
Motor Cooling Time (Seconds)	15
Current Foldback Temperature (Deg C)	80
Current Limit Min (Amps)	10
Motor Compensation (milli-Ohms)	160
AntiRollback Level	12
Pull-away Delay (centi-Seconds)	30
Slope Factor	110
Anti Rollback Velocity	0

Throttle Settings		1
Throttle Type		1
Throttle Deadband (%)		25
Throttle Gain (%)		125
Throttle Operated at Power-up		2
Throttle Reference Test		On
ISO Test Resistor		Off

(0=Single-ended,  
1=W/g-wag,  
2=Unipolar)

(0=Drive,  
1=Inhibit,  
2=Trip)

(0=Trucharge,  
1=LED,  
2=Analogue)