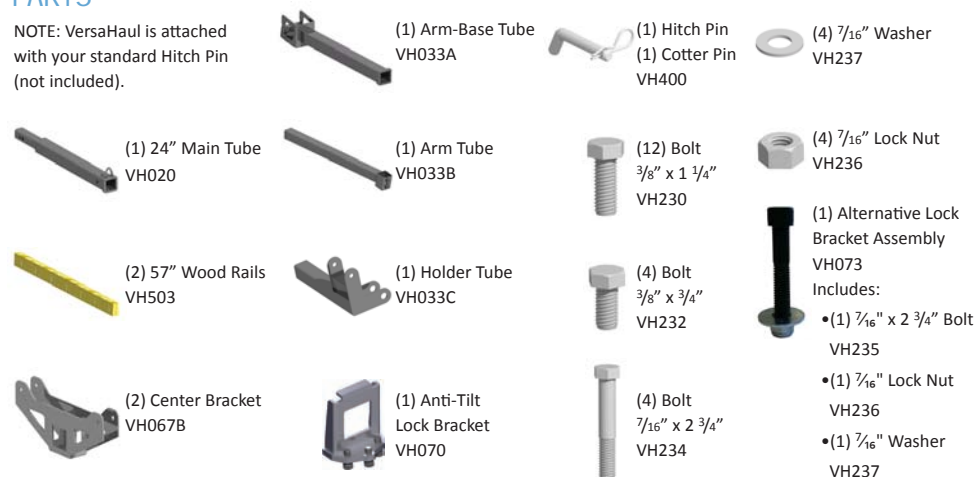


PARTS

NOTE: VersaHaul is attached with your standard Hitch Pin (not included).



TOOLS



WARNING

1. Read all instructions for future reference.
2. Follow all warnings and instructions marked on the product.
3. Do not stand on the VersaHaul.
4. Do not ride any vehicle while loading onto the VersaHaul.
5. Always store the VersaHaul in a safe place.
6. Never exceed vehicle tongue weight ratings.
7. Only use VersaHaul with Class 3 or 4 hitch. Most Class 3 hitches limit the VersaHaul to 500 lbs. total hauling capacity.
8. Improper use, storage or installation of ramp could result in death or serious injury.
9. Do not put any VersaHaul on a 5th wheel trailer or any other kind of trailer.
10. **VH-JS carrying capacity is limited to 500 lbs. max. Your vehicle suspension and hitch may limit the hauling capacity of the carrier.** For more information on vehicles and hauling capacities, visit www.versahaul.com.
11. **The VH-JS is designed for stand up model jet skis and will not support larger sit down style wave runners.** Please do not attempt to carry more than the carrier can safely hold.

LIMITED WARRANTY

The Limited Warranty on the VersaHaul Carrier.

BNK, INC warrants the carrier and related components. This warranty applies to any part found to be defective due to material and/or workmanship when inspected at the factory of BNK, Inc., Winamac, IN. BNK Inc. will, at its option, repair or replace defective parts to the original purchaser at no charge other than transportation. Sale receipt as proof of date of purchase is required, which will be returned. BNK, Inc. assumes no liability for labor charges made in performance of this warranty.

The warranty periods are as follows from date of purchase:

CARRIER FOR 1 YEAR, VOID IF: frame is broken or bent due to abuse. example: (underside scraped abusively)

ALL WARRANTIES ARE VOID IF: the carrier has been rented, used under abnormal conditions, or subjected to abuse, misuse, neglect, or improper maintenance.

All warranties should be handled at point of purchase unless other arrangements are made.

BNK, Inc. is not liable for any damage claim or liability claim, personal or otherwise resulting from operation of this carrier in any way. All transportation charges for items returned for warranty evaluation and/or replacement are to be borne by the customer.

For one (1) year from the date of purchase, BNK, Inc. will repair or replace for the original purchaser, without charge, any part or parts are manufactured by BNK, Inc. and found, upon examination at our factory in Winamac, to be defective in materials and/or workmanship.

All transportation charges on parts submitted for replacement under this warranty must be borne by the purchaser. This warranty does not apply to parts not manufactured by BNK, Inc. Their manufacturer may warrant these items. This warranty does not apply to any part which has been damaged by accident, alteration, abuse, improper adjustment, normal wear, or any other cause beyond our control.

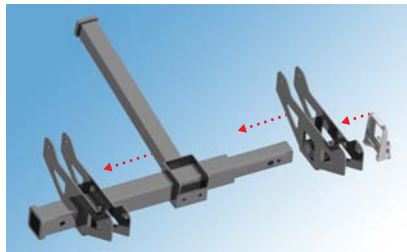
Use of replacement parts other than genuine BNK, Inc. parts may impair the safety of your machine and void this warranty.

IMPORTANT

THIS WARRANTY IS VOID UNLESS THE PRODUCT REGISTRATION CARD IS FILLED OUT COMPLETELY AND RETURNED TO THE FACTORY AT WINAMAC, IN. WITHIN TEN (10) DAYS OF PURCHASE.

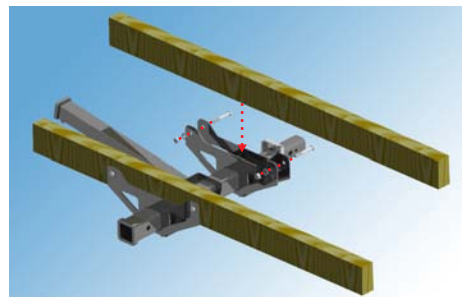
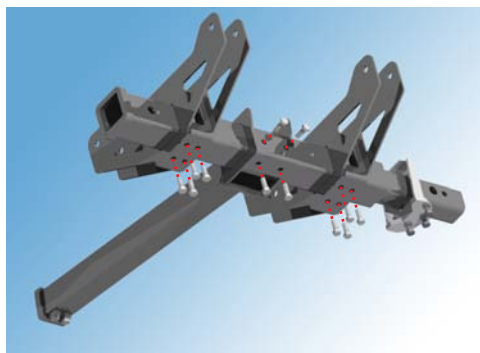
OUR WARRANTY COVERS OUR PRODUCT FOR ONE YEAR. WE ARE NOT ABLE TO EXCHANGE USED VERSAHAUL CARRIERS FOR REFUNDS OR NEW CARRIERS.

ASSEMBLING YOUR VERSAHAUL



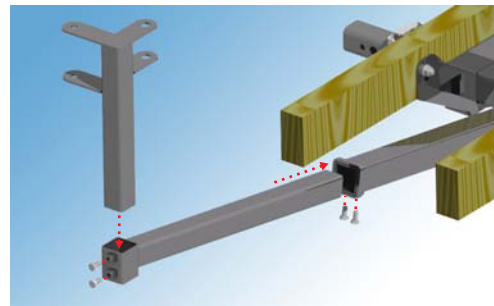
Step 1
Insert the Center Brackets, Arm-Base Tube, and Anti-Tilt Lock Bracket onto the Main Tube in the order as shown.

Step 2
Tighten the 3/8" x 1 1/4" bolts onto the Center Brackets and the Arm-Base Tube. The Center Brackets and Arm-Base Tube positions can be rearranged to fit your Jet Ski.



Step 3
Insert the Wood Rails onto the Center Brackets and secure them using the 7/16" x 2 3/4" Bolts, 7/16" Washers, and 7/16" Nuts.

Step 4
Assemble the Holder Tube and Arm Tube onto the Arm-Base Tube as shown. Tighten them using the 3/8" x 3/4" Bolts. The position of the Arm Tubes can be rearranged to fit your Jet Ski.



Assembled VH-JS Carrier



VH-JS carrier in use.

ATTACHING YOUR VERSAHAUL



Step 1
Mount the three 3/8" bolts to the included Anti-Tilt Lock Bracket. Insert bracket to the main tube as shown.



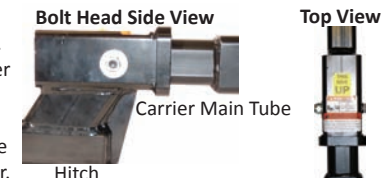
Step 2
Insert main tube into vehicle's receiver hitch and install hitch pin (not included).



Step 3
Put the bracket flush against the hitch collar. Tighten the center bolt until it fits snugly against the receiver hitch underside. Tighten the two side bolts; then re-tighten the center bolt. Make sure all bolts are tight enough such that no slack exists between the main tube and the hitch. **Note:** Road vibration may cause bolts to loosen over time. Test by rocking the carrier from the sides. Minor deformation is normal on the contact area between the main tube and the anti-tilt bracket.

Alternative Instructions

If the Anti-Tilt Lock Bracket does not fit, use the Anti-Tilt Hitch Attachment Bolt. The Anti-Tilt Hitch Attachment Bolt has a 7/18" thread size, a 3/8" Allen Head size, and a 5/8" outer head size. Slide the Main Tube of the carrier into the hitch receiver. Secure the Main Tube to the receiver with the Anti-Tilt Bolt, Washer and Nut. The Bolt must be inserted into the 7/16" hole, not the 5/8" hole. **Note:** Do not put a washer at the bolt head, but rather at the nut. The bolt head should be recessed into the receiver hole and be putting pressure on the Main Tube of the Carrier inside the receiver.



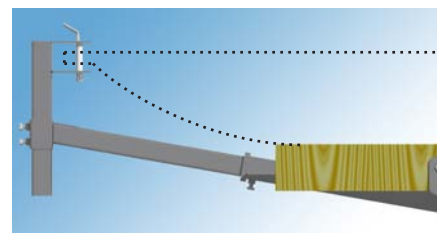
Bolt Head Side View

Top View

Carrier Main Tube

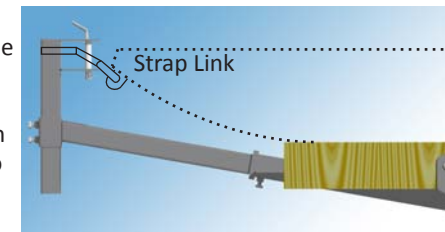
Hitch

SECURING YOUR JET SKI



The VH-JS can be adjusted to fit your personal Jet Ski. Once loaded, the Jet Ski can be secured using the Hitch Pin and the Cotter Pin.

The nylon strap with attached hook is for use when the Jet Ski has a U-Bolt on the front. Slip the strap over the top of the Holder Tube. Once the loop is over the top, reinsert the hitch pin and cotter pin. Use the hook to connect the U-Bolt on the Jet Ski to the carrier. This method is to be used in addition to strapping the Jet Ski down to the carrier with ratchet straps.



Strap Link