



INSTALLATION, ASSEMBLY AND OPERATION INSTRUCTIONS

350 POUND LIFTING CAPACITY

PLEASE NOTE THAT IT IS MANDATORY TO LEAVE THIS MANUAL WITH THE LIFT OWNER

WARNING IMPORTANT SAFETY INSTRUCTIONS

1. READ AND FOLLOW ALL INSTRUCTIONS. LIFT SAFETY CAN ONLY BE INSURED IF THE LIFT IS INSTALLED AND OPERATED PROPERLY AND ACCORDING TO THESE INSTRUCTIONS.
2. TO REDUCE THE RISK OF INJURY, DO NOT PERMIT CHILDREN TO USE THIS PRODUCT UNLESS THEY ARE CLOSELY SUPERVISED AT ALL TIMES.
3. DO NOT PERMIT CHILDREN TO PLAY ON OR AROUND THIS PRODUCT.
4. NEVER APPLY DIRECT WATER PRESSURE TO THE ELECTRONIC COMPONENTS.
5. SAVE A COPY OF THESE INSTRUCTIONS IN A SAFE AND EASILY ACCESSIBLE PLACE.
6. CONTRACTORS AND OR INSTALLERS ARE SOLEY RESPNSIBLE FOR THE INSTALATION AND EXICTION OF THE INSTALATION OF THIS PRODUCT AND MUST UNDERSTAND STRUCTURES, CEMENT STRENGTH, WEIGHT LOADS AND LEVERAGE.

MARINERN POWER POOL LIFT

-READ CAREFULLY -

Please check the entire box in inside all packaging materials for parts. Before beginning assembly, read the instructions and identify Parts using the figures and parts lists in this document. It is critical that all parts be carefully inspected by the installer prior to installation to ensure that no damage occurred in transit and that a damaged part is not used. if any damage occurred in transit or you are missing parts, notify Igreen products immediately! Failure to notify us of damaged or missing parts within 3 days of receipt of shipment may affect your ability to receive replacement parts. Proper installation cannot be overstressed.

Improper installations will void the warranty and may affect the safety of the user.

The Mariner will arrive partially assembled in multiple boxes. Begin by removing all parts from the boxes in locating the parts for your lift in these parts list below. Refer to the parts breakdown drawings in the back of this manual for assistance.

STARTING WITH THE SIX POINT SAFETY POOL LIFT HANGER:

To start, let's make certain that you have all of the parts necessary to construct the hanger.

How to assemble the six-point safety cradle, you should have 2 three-point side bars, each containing a nut washer and Bolt:



With a pair of pliers and in 11/16 wrench you will need to attach each of the three point brackets to the centerpiece. Please make certain that the washer remains closest to the bolt.



Once this is complete, this sling will be placed on the six point safety bar. This will be pictured at a later point.

POWER MAST AND BATTERY/CB BRACKET ASSEMBLY

In this step you will be connecting the Battery/CB BRACKET to the Power Mast of your Mariner Pool Lift. The two parts pictured below are what you will be working with to complete this step.

Power Mast:



As you can see in the next two pictures, you will want to have the parts that connect to the battery power source facing the



top part, or the handles of the lift. The battery support bar should be on the bottom of the lift.

You should have received FOUR screws with your Mariner lift. One long, two medium, and one short.

#16 in Parts List by 2 % 55 Shoulder Bolt (S.S)



ATTACHING THE POWER MAST TO THE POWER BOOM

You will use the longest screw (½" by 2 Shoulder Bolt Stainless Steel) to fix the Power Mast to the Power Boom. As you can see in the picture on the left, the nodule which is used to carry the Pool Lift Hanger will be facing down.



The picture on the left shows you the parts that are necessary. The picture on the right shows you how the completed step should look.

ATTACHING THE LINEAR ACTUATOR

The next step is to attach the Linear Actuator to the Power Mast and Power Boom. In order to complete this step you will need one of the medium length screws and one of the shortest screws. You will also need the Linear Actuator, which will be attached to Power Mast and Power Boom.

As pictured below the medium screw will attach to the top part of the hydraulic actuator and the shortest screw will attach to the bottom part.

Before:



After:



Bottom - Shorter Screw



Top - Longer Screw



ATTACHING THE HANDSET CONTROL AND BATTERY TO YOUR LIFT:

The Handset Control (pictured below) has two components. One component attaches to the Linear Actuator and the other

Attaches to Linear Actuator



Attaches to Control Box

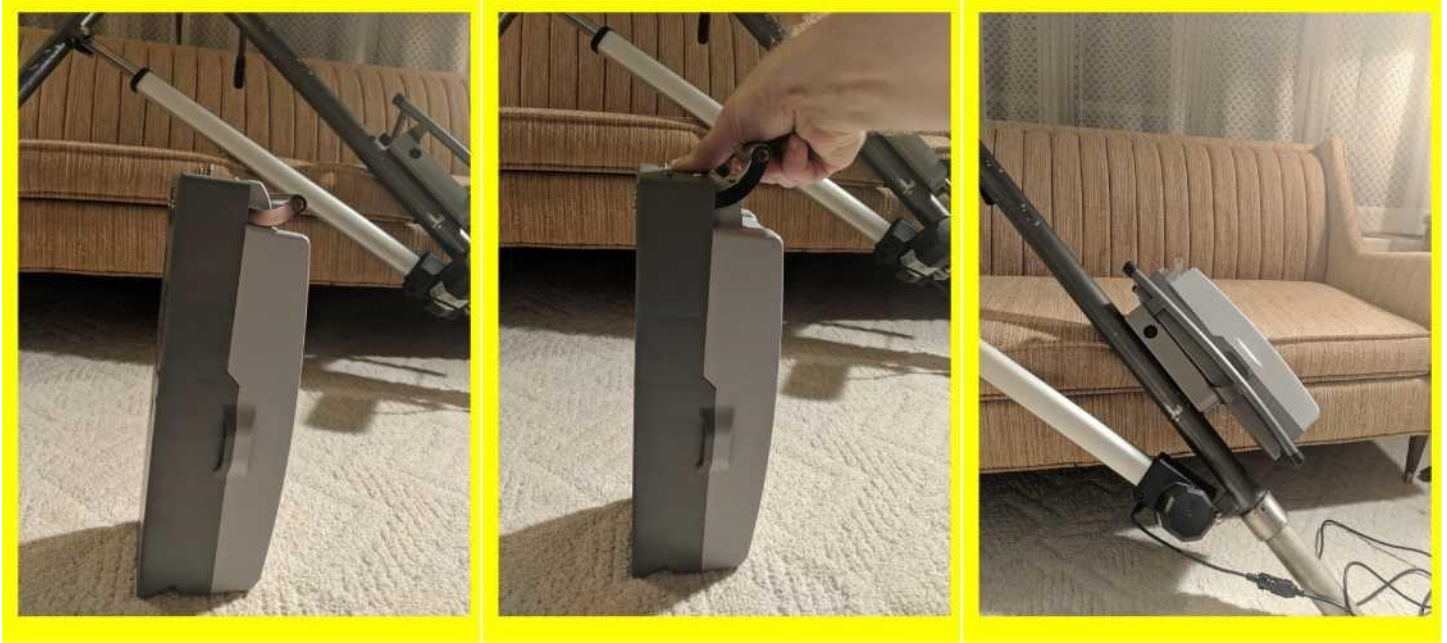


component attaches to the Control Box.

To attach the Handset Controller to the Linear Actuator you will need to match the arrows up as pictured below. You will plug the Handset Controller into the Linear Actuator so that the bottom of the controller when properly plugged in is flat. Note: All Mariner Lifts are now shipped with a four button hand set that allows user to upgrade to a fully automatic simply by ordering a rotating kit.



To connect the Battery to the Control Box you will first need to lift the handle of the battery so that the batteries safety guard can drop. Once the safety mechanism on the battery is dropped, you will be able to use the indentation on the bottom part of the battery as a guide to snugly attach the battery to the control box, which is attached to the Power Mast. Please see the pictures below for a proper sequence.



Next you will align the three prongs on the Handset Controller connection point with the three holes on the base of the battery pack.

- NOTE: To avoid damage to the Handset Controller, please make certain to align the male and female connectors.

ATTACHING THE POOL LIFT HANGER TO THE POWER BOOM

By this point if everything has been completed the correct way you will have just one screw left. You will use this screw to attach the Lift Hanger to the Power Boom. Once you have completed this step, your Marinern lift will be ready to use





once the anchor has been properly and safely installed.

PROPERLY INSERTING THE POOL LIFT ANCHOR

NOTE: It is recommended that you have a licensed contractor insert the Pool Lift Concrete Anchor. we strongly urge that you consult with and hire a licensed contractor to complete this last portion. Please think Safety First. The manufacturers and dealers of this lift cannot and will not be held responsible for any do-it-yourself mishaps.

The frictionless Pool Lift Anchor has four parts in total.

Concrete sleeve, the bottom stopper, the frictionless insert, and closing cap.



Completed Part:



First, the Stopper goes into the Anchor:

Start:



Finish:



Next the frictionless sleeve gets inserted into the anchor:



The cap is used for keeping the anchor clean and sealed when the lift is in a different location or not in use.



PLEASE CAREFULLY ADHERE TO THE FOLLOWING STEPS TO PROPERLY INSTALL THE CONCRETE ANCHOR SLEEVE.

Note: the Marinern power lift that is installed into a concrete deck has additional anchoring options. Anchor options include a surface mount anchor and or a wood deck anchor system which are both purchased separately. The power Marinern anchor system can be installed in an existing pool deck (retrofit installation) or when pouring a new concrete pool deck (new construction installation).

MARINERN POWER POOL LIFT RETROFIT ANCHOR INSTALLATION:

Note: all lifts must be weight tested after installation prior to use. Inspect your Lift Every 6 months as well as the deck and anchor. Do not use any alternative lift with installed anchor.

REQUIRED TOOLS FOR THE CORE DRILLING METHOD:

1. TAPE MEASURE
2. 10 CM CORE DRILL BIT
3. TWO-PART EPOXY OR HYDRAULIC CEMENT
4. FELT TIP MARKING PEN
5. CORE DRILL
6. ELECTRICAL TAPE
7. SMALL CARPENTER'S LEVEL
8. VACUUM OR COMPRESSED AIR SOURCE

STEP 1:

Determine the best location for the lift. Be sure to mount the lift at a location that is 14in from the edge of the deck or pool wall or edge of concrete slab that you will be using. Make sure the location includes enough clear space to easily transfer into the lift seat. Keep in mind this lift will require assistance from another person to operate and you should locate it in an area that can accommodate another person. The lift should also be located so as to provide at least 12 in of unobstructed deck to each side of the lift to accommodate easy maneuvering of the lift over the water and back.

STEP 2:

Locate the concrete anchor socket that came with your lift. Be careful not to lose the protective cap on the anchor. This will be used to keep dirt and debris out of the socket when the lift is not installed in the anchor.



STEP 3:

This setback to the center of the anchor must be no less than 14 in and 16 in from the pool wall. The anchor location must also be 15in from any control joint or edge of concrete slab. Measure the location out using your tape measure and marking pen.

STEP 4:

Providing your current concrete slab is 9 inches thick you may drill 3.5 inch in diameter hole that is also 9 inches deep at the desired location for the lift anchor socket. The whole will be 9 inches deep to allow for the grounding lug which protrudes from the bottom of the anchor. Depending on the thickness of your concrete slab, you may drill completely through this slab and into the underlying dirt. If you have drilled all the way through your deck you may need to saw cut the deck and pour a new footing similar to new construction installation. You will likely need to cut a 14 inch by 14 inch slab in your concrete as most concrete slabs are not 9 inches thick. Once you have cut this 14 inch by 14 inch square hole in your concrete you will then need to use post hole diggers to go down 36 inches in the ground. Lastly you would fill this hole with wet concrete and steel rebar placing the stainless steel concrete anchor in the center and sinking it allowing it to extend up 3 inches above the top or surface of the concrete. Note: be sure it is plum or level before allowing the fresh concrete to harden.

TIP: use the 230 mm - 9 in as a depth Mark to tell you when to stop Drilling.

STEP 5:

Clean out the hole and make sure your hole is deep enough to allow the anchor to be flush with the finished deck surface. If you have drilled completely through the deck be sure the thickness of concrete is a minimum of 9 inches in the event it is under 9 inches in thickness you will be required to replace a section of your current concrete slab. The best way to do this is to cut a 14 inch by 14 inch square section of your existing concrete slab out and dig down in the ground with post hole diggers 36 inches. You will then fill this cavity with fresh wet concrete, lastly you will sink the concrete anchor in the center of the 14" x 14" area with it sticking above the concrete 3 inches. You must be sure the anchor positioned in the concrete perfectly level so when the lift is placed in the anchor the lift is perfectly level.

STEP 6:

Ground the anchor according to your local code requirements. This may require additional drilling and or other tools.

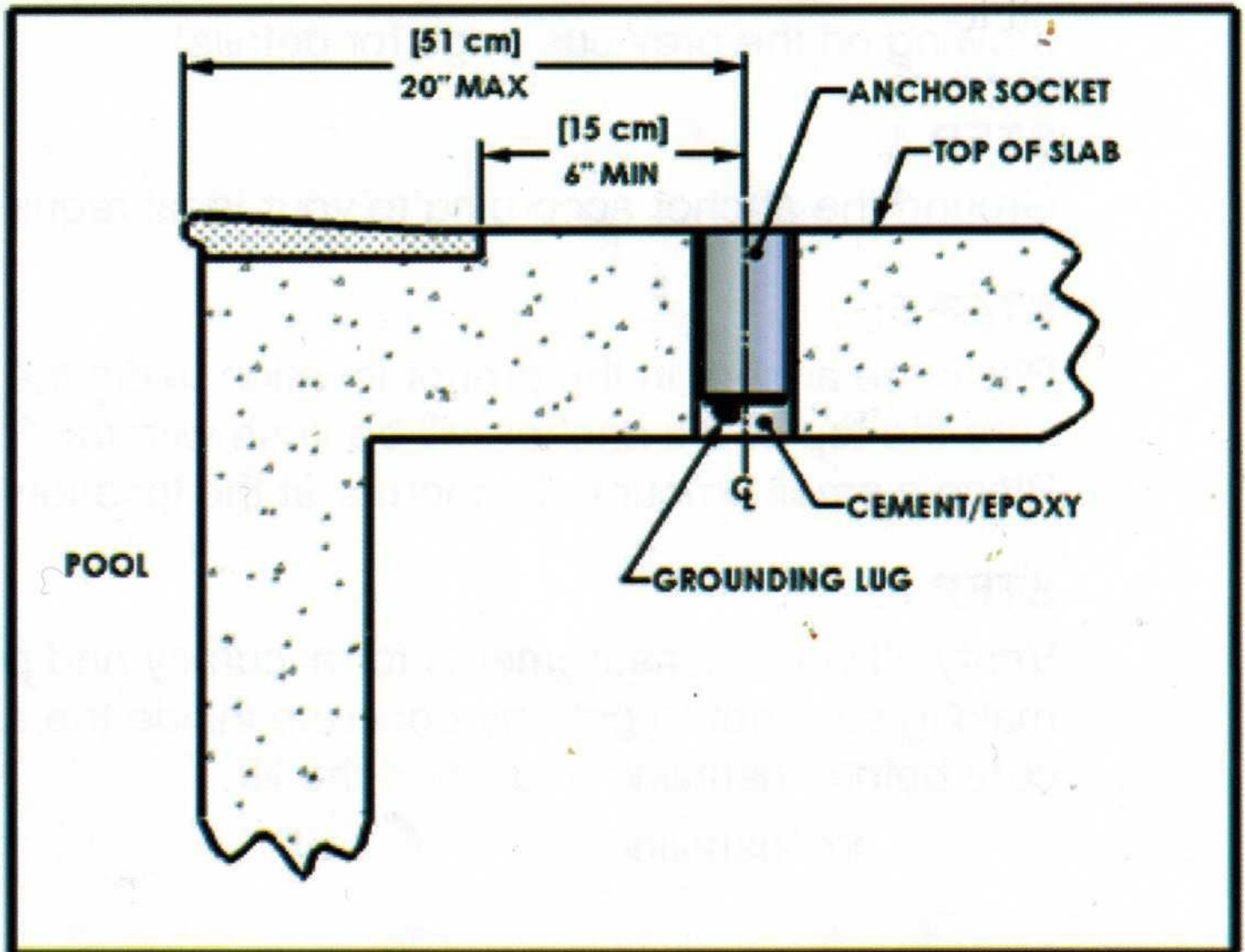
STEP 7:

Providing your existing concrete is 9 inches thick then carefully insert the anchor into wet concrete and leave it extending above the top or surface of the concrete by 3 inches. (when installing the simi automatic you may set the anchor level with the top or surface of the concrete. Use a pipe or object to stick down inside the anchor allowing installer to use a level to confirm it is perfectly plum before allowing connect to harden. Many contractors / installers have used to surface mount anchor to lag bolt the surface mount anchor to concrete. We however do not recommend this application as lag bolts of this nature must be load tested and specific to the type and strength of the concrete that was poured. A leveling caulk should always be used between the surface mount anchor and the surface that it is being bolted to regardless of the material you are bolting to, wood, concrete or other..

TIP: fill the hole about a quarter full of cement or epoxy prior to inserting the anchor. As you insert the anchor rotated back and forth so that you can evenly distribute the cement or epoxy around the anchor.

STEP 8:

Providing your existing concrete slab is 9 inches or greater check the anchor for level and Plumb in Port hydraulic cement or high strength epoxy into the remaining space around the anchor making sure there are no void spaces. Let cement or epoxy cure for 24 hours or minimum recommendations before using the lift.



NEW CONSTRUCTION ANCHOR INSTALLATION

NOTE: please be sure to have all supplies required prior to starting.

REQUIRED TOOLS:

- TAPE MEASURE
- STRING LEVEL
- SMALL CARPENTER'S LEVEL
- STRING LINE

STEP 1:

Determine the best location for the lift. Be sure to mount the lift at a location that is 14 inch from the edge of deck or pool wall. Make sure the location includes enough clear deck space to easily transfer into the lift seat.

Keep in mind this lift will require assistance from another person to operate and you should located in an area that can accommodate another person. The lift should also be able to accommodate 12 in of unobstructed deck on each side of the lift to accommodate easy maneuvering of the lift over the water and back.

STEP 2:

Locate the concrete anchor socket that came with your lift. Be careful not to lose the protective cap on the anchor. This will be used to keep dirt and debris out of the socket when the lift is not installed in the anchor.

STEP 3:

The setback to the center of the anchor must be no more than 14 in from any control joint or edge of concrete form you are using to hold your freshly poured concrete. The depth of the concrete must be 14 inches with a 30 inch radius from the center of where you intend to place the stainless steel anchor. Measure the location out using your tape measure. Reference the drawing on the previous installation instructions for details.

STEP 4:

Ground the anchor according to your local requirements.

STEP 5:

Place the anchor in the proper location using the string level and string line to make sure the top of the anchor will be 3 inches above the finished surface of the new deck.

STEP 6:

Verify all your measurements for accuracy and Port the deck as you normally would, making sure not to get any concrete inside the anchor system. Allow the concrete to cure for 48 hours. Then Fully Load Test The Lift before using the lift.

OPERATING INSTRUCTIONS - MARINERN POWER POOL LIFT

NOTE:

- FOR SAFETY, CHECK FOR WORN PARTS AND LOOSE BOLT CONNECTIONS PRIOR TO EACH USE.
- ALL OPERATORS SHOULD BE FAMILIAR WITH ALL LIFT COMPONENTS AND THEIR INTENDED USES.
- OPERATORS SHOULD ALSO BE COMFORTABLE WITH ALL LIFTING PROCEDURES BEFORE ATTEMPTING TO LIFT A PERSON WITH THE LIFT.

The Mariner power pole lift requires the use of an operator to assist the lift occupant with the transfer into the pool. There are two methods of loading the lift occupant into the harness. The method of loading will depend on the physical ability of the lift occupant. If the user has very limited use of his or her upper body, it will be necessary to follow the procedures as follows. If the user is physically able, he can simply Place himself into the harness without need for assistance. Once in the harness, it will be necessary for an operator to assist with the transfer into and out of the pool.

- * With the lift in the up position and the boom arm located over the dock, roll the user under the lift and engage the brakes on the wheelchair.

- * With the user facing the assistant, place the mesh seat sling under the seated user while still in the wheelchair.
- * Attach the chain to the mesh sling and the overhead hanging bar. There should not be any slack in the chain at this time.
- * Make sure all connections are secure and the mesh seat sling is level on each side.
- * Raise the user to desired height. The user should just clear the wheelchair.
- * Rotate the lift so that the user is above the pole, keeping one hand on the boom and one hand on the user to stabilize them.
- * Lower the user using controller on tool the user is submerged sufficiently in the water to allow an easy transfer to the pool.
- * This procedure is repeated to remove a user from the water.
- * When the lift is not in use, remove the sling, Hanger bar and Mast from the anchor socket and replace the protective anchor cap.

24 VOLT BATTERY SYSTEM OPERATING AND INSTALLATION INSTRUCTIONS

CAUTION: PLEASE MAKE CERTAIN TO ALWAYS CHARGE YOUR BATTERIES AWAY FROM THE POOL AREA. YOU SHOULD NEVER CHARGE THE BATTERIES NEAR STANDING OR MOVING WATER.

How to operate the Mariner lift connect a fully charged battery and plug in the handheld controller to the control box and push the corresponding button to either lower or raise the unit. The lift should be able to complete approximately 50 through 200 full Cycles. In the event you have a low battery do not attempt to operate the lift! Remove the battery from the unit and recharge it prior to attempting to do another lift.

To recharge the battery, simply grip the handle of the battery and lift up slightly then pulled towards yourself. This will unclip the battery from the lift. Next plug the charger into the battery. When the charger is plugged in the battery, the green light on the charger will become illuminated when the battery is fully charged. When the battery is charging, the yellow light will illuminate. If there is a problem charging the battery the red light will be on. Once green, reconnect the battery to the Mariner lift.

NOTE: be sure your battery is fully charged prior to operating the Mariner lift.

TIP: for optimal battery performance, please use these helpful tips.

1. Recharge the battery as often as possible. The battery power unit is a sealed lead acid battery pack. Frequent recharges will prolong the battery life and maintain a high cold amperage capacity.
2. Do not expose the battery to freezing temperatures.
3. Do not expose the battery to prolonged periods of extreme heat or severe cold temperatures.
4. Protect your battery from long periods of direct sunlight. Heat will shorten your battery life. Optimum operating temperature is below 68 degrees Fahrenheit or 20° C.
5. Never drop or bump the battery pack. This may result in loose or damaged internal connections, and may bend the battery terminals causing poor or lost contact with the control box.
6. Keep battery terminals Clean and Free from dirt and corrosion to ensure good contact.
7. Periodically use Dielectric grease on the contact points to promote better conductivity.

SAFETY CLEANING AND MAINTENANCE INSTRUCTIONS

NOTE: Keep all plugs and contacts clean and consistently check for corrosion. Lubricate Hardware including joints and be sure nuts bolts and screws are properly tightened. If there are any worn Parts, replace them before using the Mariner Igreen Products incorporated Power Pool Lift

CARE OF YOUR LIFT

Routine cleaning is an absolute necessity to ensure the Integrity of the lift. Note that the Mariner Pool Lift should not be stored in a pump room or in a storage room where pool chemicals are kept. Storing The Lift near pool chemicals may cause rusting and other damage to a car. Your Mariner partial stainless steel lift is powder coated to protect the stainless steel from rusting. Most rusting will occur at WellPoint, crevices, under gaskets, rivets or bolt heads.

The choice of a proper cleaning product is up to the consumer and there are many to choose from. Depending on the type of cleaning and the degree of contamination or rusting, some products are better than others. For routine cleaning the products most recommended are gentle soaps or detergent or diluted mixtures of ammonia. For stubborn spots and stains try using soft scrub with some brisk rubbing.

DO NOT USE POOL WATER TO CLEAN, USE ONE FRESHWATER

If the lift is used daily make sure to wash the lift at the end of the day. Wash the lift off using a mild soap and a soft cloth. Make sure to pay special attention to weld points and crevices. Do not use a bristle brush or steel wool to clean the lift. Check that the lift is working properly and then place the battery on the charger. It is recommended that the battery be charged after every day of use.

If the lift is used weekly follow the same steps as above. Also be sure to check all of the contact points or terminals for damage or corrosion. If you notice corrosion gently clean the terminals. To clean corrosion from the terminals use a Q-tip and some rubbing alcohol. If the corrosion is partially stubborn try using a 3M Scotch-Brite Pad, but be careful not to damage the terminals. Apply Dielectric grease to the terminals after cleaning them. This will help to prevent further corrosion. Do not leave the battery on the lift. Always store the battery on the charger whenever the lift is not being used.

If the lift is used monthly follow the same steps as above. Also check the nuts and bolts to make sure they are securely fastened this is a good idea, no matter how often or infrequently the lift is used! Also make sure the batteries are not stored on the lift.

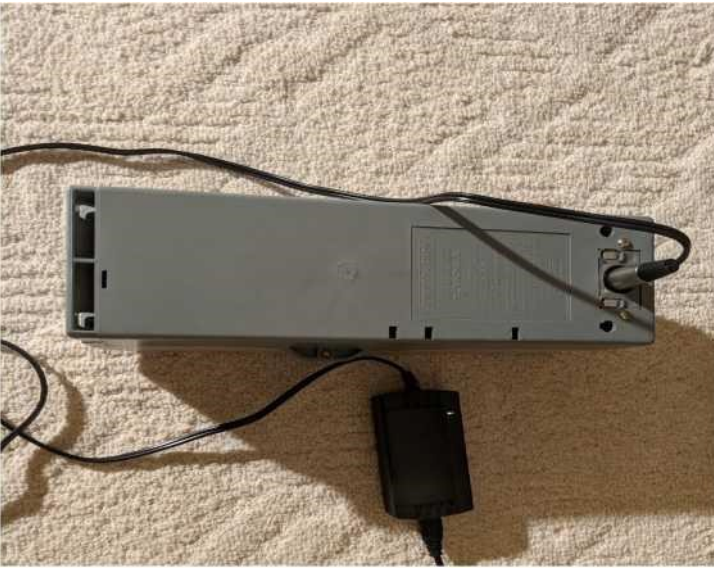
If the lift is being stored for an extended period of time follow all of the steps above. Check for rusting at all crevice and weld points. If you notice rusting spray some WD-40 on the affected area and take a 3M Scotch-Brite pad and Rub briskly. Afterward be sure to wash and rinse the lift again with soap and water. When storing the lift make sure it is in a dry area in covered. *Do not store in or around pool chemicals.

TROUBLESHOOTING YOUR MARINER POOL LIFT

If your Mariner Pool Lift is not functioning correctly, it can be extremely frustrating. The good news is that it is typically simple to troubleshoot, diagnose, and fix problems.

Once you have your Mariner Power Pool Lift completely assembled, few things can be as frustrating as connecting all of the parts as indicated in the manual and not having anything happen when you press any of the buttons. In the event that happens, the first thing you want to do is make certain that you are working with a charged battery.

One of the most common reasons for troubles is that a battery may not be properly connected, or one of the connector cables may be loose. That is the first thing you will want to check.



As pictured, a fully charged battery will be indicated by a green light when the battery is plugged into the charger.

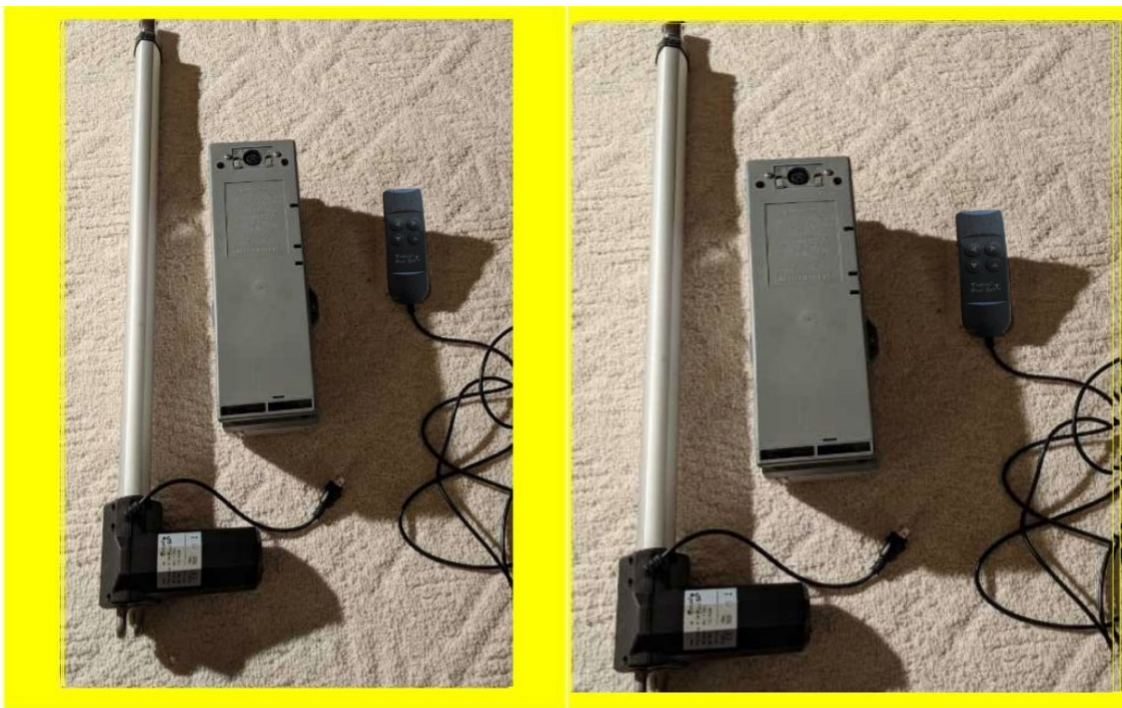
Once you get a green light, you will want to do a simple test to make certain that the actuator arm kit, or the hydraulic part of the lift is functional.

To do this test you will need the control panel that lifts the boom up and down, the battery, and the actuator arm.

You will connect the Handset Control to the Linear Actuator and plug the control mechanism into the battery as

pictured below.

Once this is accomplished you can press on the down button. As a result of negative polarity the actuator of the lift should begin to extend as pictured below.



If nothing happens and everything is connected securely, you will want to try the exact same thing with the other battery. If the other battery that comes with the unit does move the hydraulic piston, it could be as simple as having a single bad battery. If you have a bad battery, please call the vendor you purchase the unit from.

If this test with both batteries provide a working result, The Next Step would be to take a look at the control box housing to make certain that your connections are secure.

The first step is to take the gray face cover off of the box once it is disconnected from your unit. The two pictures below will give you an idea of what to look for.



As you can see, none of the cables are connected. You will want to connect the red cable to the black Cable and the black cable to the red cable as pictured below.



A simple way to test for results before putting everything together would be to connect the battery to the battery cage, plug the controller into the actuator or hydraulic arm, and conduct a test to make certain the hydraulic part of the lift is working as you wish that it would. If you are not getting the results that you would like, simply reverse the wires.

Once you have your lift working the way that you wish, you can put the cover back on and proceed to the instructions in the original manual.

The Following Information Applies To The Fully Automatic Mariner



Step1:The first step when installing and Assembling the Fully Automatic Mariner is to Install the rotating gear to the surface mount Anchor by sliding the center opening over the Top collar of the surface mount..

Next you will tighten the bolts using a Allen Wrench to secure the rotating gear To the surface mount.





Final check all bolts insuring all bolts are Tight and solid with the Allan Wrench.

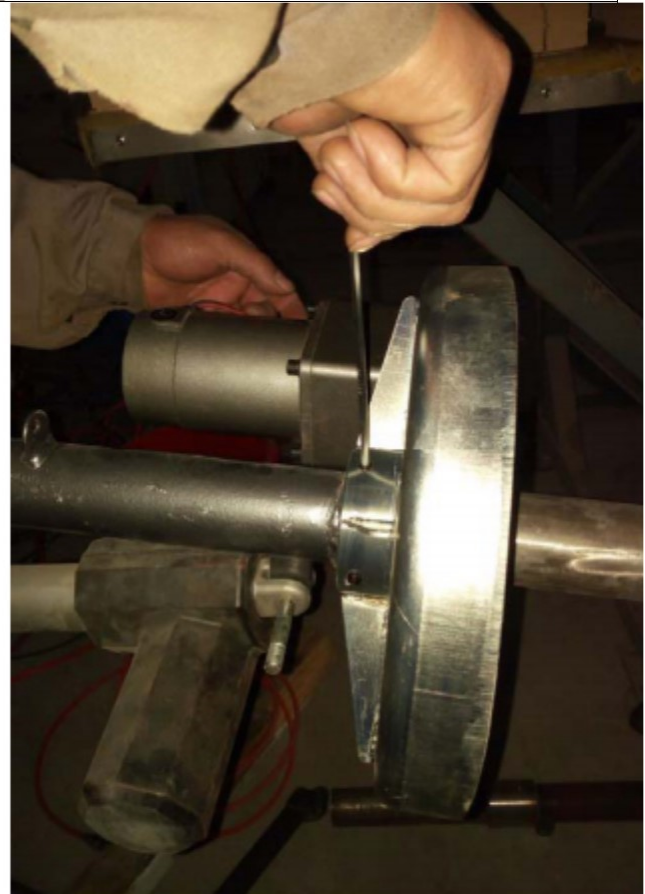
Step2:Installing the Rotating Motor Assembly.
Slide the rotating motor assembly to the bottom
Of the mast, sliding it as far up the mast as it will
travel.





Next, you will lock the Rotating Motor to the Mast by tightening down the bolts using a Allen Wrench.

Once again do a final check insuring that All bolts are tight with the Allen Wrench.



Finally, be sure you have assembled the lift using the standard Mariner Manual and slide the bottom of the mast into the surface Mount insuring both gears slide together.

The only thing left is to load test your Mariner Lift by using a minimum of 400 pounds prior to actually using the lift to lift a individual or person.

Pairing Or Resetting Your Remote Transmitter With Your Receiver

First, locate the control board(under the battery) as showed in Fig. 1.

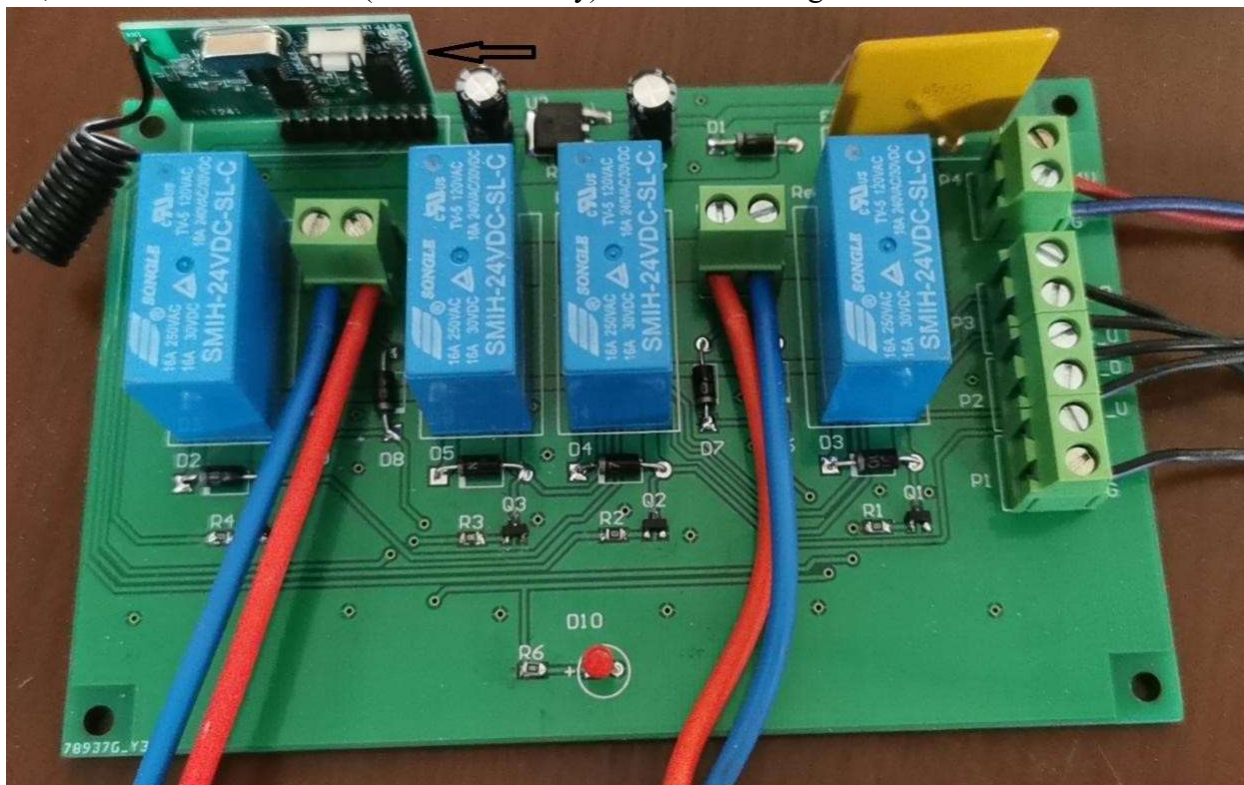


Fig. 1

Follows the arrow as shows in Fig. 1, the wireless receiver module as shows in Fig. 2

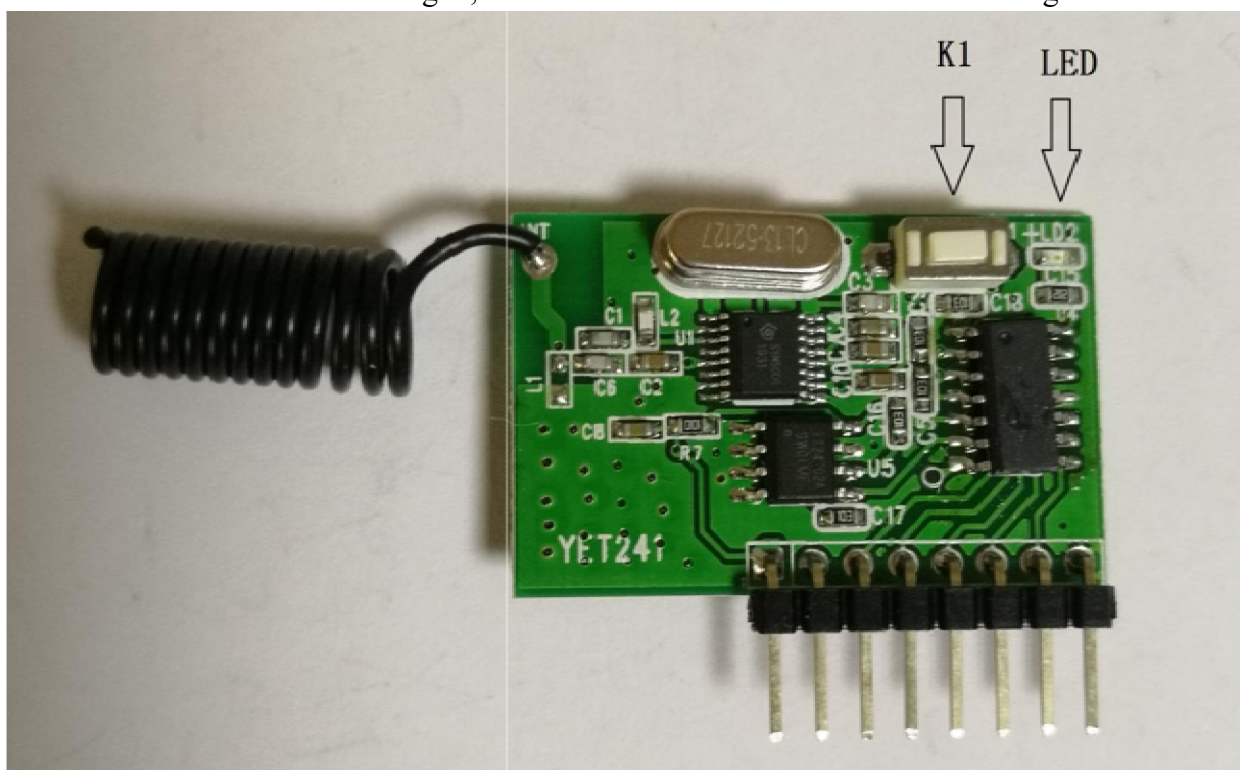


Fig. 2

Follow the procedures as below to pair the New Wireless Remote:

1. Press K1 as indicated in the above graph, the LED will be ON, then press any key of the wireless remote , after the LED flashes Three times, it means the NEW wireless remote is READY.
2. If you lost the OLD wireless remote(s) and want to disable it(them), just press K1 for 8 seconds.

MARINER POWER POOL LIFT

Under no circumstance should the lift and slings or entire system be operated by a person who is not considered competent and have a history using this equipment or has been previously trained in using this equipment. Failing to comply to this warning may result in serious injury to the operator, and/or the individual being lifted or transferred

The Mariner lift and associated track and slings are not be used as a toy by others. Do not use this equipment for unsafe practices as it is strictly designed to transfer an individual from one location to another such as wheelchair to bed. Do not allow children to play with the Mariner or any of its corresponding equipment. The manufacturer's warranty will be voided if persons unauthorized by IGREEN PTE, LTD perform work on the Mariner lift system. Under no circumstances should users open or remove the cover. There are no user serviceable parts inside the cover of the Mariner. Do not remove cover screws, or open the lift unit in any way, as this will VOID THE WARRANTY.

In the event, where there is more than one operator using the Mariner lift and slings, it is imperative that all operators or care persons be trained on the proper use of the Mariner lift and associated track and slings. In situations where there is a turnover of different operators such as newly hire or even long term care providers/employees, that a training program should be established by the facility to acquaint new operators as well as others with this equipment. It is important that all users/operators read this entire manual.

Never expose the Mariner directly in water. Warranty does not cover any misuse or abuse of the lift.

The Mariner the lift and equipment must be inspected and maintained on a regular basis. See section titled "General Inspection and Maintenance". Any parts used with the Mariner, including slings should be checked before every use to ensure that they are in good working order. Check for signs of wear and tear, slings are subject to detrition from getting wet and drying several times again prior to use. In the event anything abnormal or any concerns should arise during this check you should stop. DO NOT PROCEED WITH USE. Report any unusual wear or damage immediately to your local authorized IGREEN PTE LTD dealer.

The Mariner, lift and slings are to be only used for lifting and transferring of a person. IGREEN PTE, LTD will not be held responsible for any damage caused by the misuse, neglect or purposeful destruction of the lift and/or its' associated components.

Do not in under any circumstances exceed the maximum load capacity of this lift. Refer to the "Specifications" section of this manual. Be sure to confirm and not to exceed the maximum weight capacity of all components being used such as the track, trolley, accessories, and sling.

Never exceed the maximum load capacity of the Mariner lift or any corresponding equipment. There is a risk of explosion if the lift is used in the presence of flammable products or anesthetics. Please ensure that a clear space is maintained around the area of the lift and track. Remove all curtain material and other items that could be an obstruction prior to performing a transfer.

Igreen products lifts have a limited lifetime warranty on the frames, not including the powder coat finish. Igreen Products, Incorporated also warrants to the original end-user that all non frame components manufactured when properly installed in accordance with assembly and installation instructions and properly used in maintained, shall be free from defects in material and workmanship for a period of one year from the date of original purchase, provided that Igreen receives prompt notice in writing of any defect or failure and satisfactory proof thereof, with the following exceptions:

Exception: all electrical components, including the linear actuator shall have the following warranty period: 12 Months from date of delivery.

This warranty specifically excludes reimbursement for labor to remove, repair, or install the product and any return Freight charges. The warranties do not cover any damages due to accident, misuse, abuse, negligence or failure to properly maintain any products, or normal wear and tear from day-to-day operations. In the event that products are altered, repaired, or improperly installed or improperly used by anyone without the prior written approval by Igreen Seating, all warranties are void.

IMPORTANT: AMOUNT OF WEIGHT IS PLACED ON LIFT SHALL NOT EXCEED THE RATED LIFTING CAPACITY OF 400 POUNDS OR 181 KG

To initiate a warranty claim, the owner of an Mariner product must provide the place of purchase, in writing, with a full description of the product, its serial number, the date of purchase and installation, and the exact nature of the defect. Within 30 days after receipt of a written warranty claim and barring any unforeseen delays.

If requested by a duly appointed distributor for inspection and or repair, Igreen will, at its own option, repair or replace the failed or defective item, and deliver the repaired product or replacement to the buyer of the product, Freight prepaid to the destination provided for the original order. Products returned it to Igreen replacement under this limited warranty shall become property of Igreen.

A new warranty shall not be established for the repaired or replaced products. Such products shall remain under warranty only for the remainder of the original warranty. On the original products purchased.

This written limited warranty constitutes the final, complete and exclusive statement of warranty terms. No person or organization is authorized to make any other specific or implied warranties or representations on behalf of Igreen.

THE WARRANTIES SET FORTH HEREIN ARE IN LIEU OF ALL OTHER WARRANTIES, EXPRESSED OR IMPLIED, WHICH ARE HEREBY DISCLAIMED AND EXTENDED, INCLUDING WITHOUT LIMITATION ANY WARRANTY OF MERCHANTABILITY OR FITNESS FOR A PARTICULAR PURPOSE OR USE.

THE SOLE AND EXCLUSIVE REMEDIES FOR BREACH OF ANY AND ALL WARRANTIES WITHOUT RESPECT TO THE PRODUCTS SHALL NOT EXCEED THE ENTIRE AMOUNT PAID TO IGREEN BY THE ORIGINAL PURCHASER FOR THE FAILED OR DEFECTIVE PRODUCT.

IN NO EVENT SHALL IGREEN PRODUCTS, INCORPORATED BE LIABLE FOR ANY INCIDENTAL, CONSEQUENTIAL, SPECIAL, INDIRECT, PUNITIVE OR EXEMPLARY DAMAGES OR LOST PROFITS FROM ANY BREACH OF THIS LIMITED WARRANTY OR OTHERWISE.

THIS WARRANTY GIVES YOU SPECIAL LEGAL RIGHTS AND YOU MAY ALSO HAVE OTHER RIGHTS, WHICH MAY VARY FROM STATE-TO-STATE.

SOME STATES DO NOT ALLOW THE EXCLUSION OR LIMITATION OF INCIDENTAL, SPECIAL OR CONSEQUENTIAL DAMAGES, SO SOME OF THE ABOVE LIMITATIONS OR EXCLUSIONS MAY NOT APPLY TO YOU.

Igreen Products
LanWanKangCheng 22-2-302
Shouguang City, China