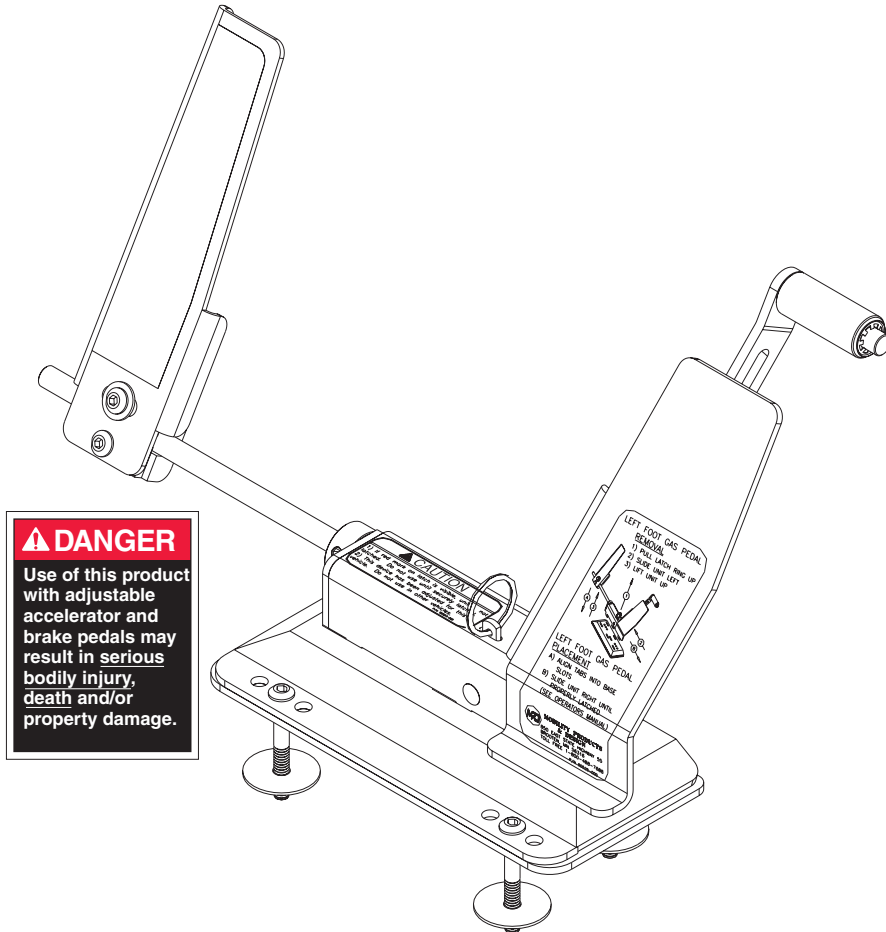




Personally Driver Fitted

Left Foot Gas Pedal Model 3545 Installation and Owners Manual



PATENT NO.: US 6,494,115 B1

Information

Many states either require or recommend that anyone using our products have a driver evaluation prior to installation.

We recommend all customers have a driver evaluation performed by a qualified evaluator.

If you should need assistance contact

www.driver-ed.org

or

Discover Your Mobility Inc.

at toll free 866-868-9694.

www.discovermymobility.com

Table of Contents

Warnings and Cautions	2
Determining Base Plate Location	3
Marking Base Plate Location	4
Mounting Left Foot Gas Pedal Base and Base Plate	4
Attaching Left Foot Gas Pedal to Base	5
Adjusting Left Foot Gas Pedal Position.	6
Removing Left Foot Gas Pedal From Base	7
Post Installation Dealer Inspection.	7-8
Left Foot Gas Pedal Operating Instructions.	9
Maintenance.	10-11
Warranty	12-13
Parts Listing.	14-15

**WARNING: NOT RECOMMENDED FOR TRANSFER
FROM ONE VEHICLE TO THE NEXT**

FOR ASSISTANCE OR PARTS

Call: (866) 868-9694

Fax: (574) 542-2132

Warnings and Cautions



General Installation and Operation Warnings

THIS PRODUCT MUST BE INSTALLED ONLY BY AN AUTHORIZED MOBILITY PRODUCTS & DESIGN DEALER.

ONLY TRAINED OPERATORS MUST OPERATE THIS DEVICE.

KEEP THE DEVICE MAINTAINED REGULARLY. (ACCORDING TO THE MAINTENANCE RECOMMENDATIONS)

INSPECT THE DEVICE PRIOR TO EVERY OPERATION.

DO NOT USE THE ACCELERATOR GUARD AS A FOOT REST. REFER TO FIGURE 5.

IF SOMEONE OTHER THAN THE TRAINED OPERATOR IS USING THE VEHICLE, THE LEFT FOOT GAS PEDAL MUST BE REMOVED. REFER TO FIGURE 7.

PLACE THE WARNING DECAL ON THE INSIDE OF THE VEHICLE WINDSHIELD. DECAL MUST BE VISIBLE BY THE DRIVER WHEN SEATED AND MUST NOT IMPAIR VISIBILITY.

THE LEFT FOOT GAS PEDAL IS TO BE USED ON VEHICLES EQUIPPED WITH AUTOMATIC TRANSMISSION ONLY.

READ AND UNDERSTAND THIS MANUAL PRIOR TO INSTALLING AND OPERATING.

DO NOT INSTALL THE BASE PLATE ON TOP OF FLOOR MATS OR ANY OTHER LOOSE FLOOR COVERING NOT ATTACHED BY VEHICLE'S ORIGINAL MANUFACTURER.

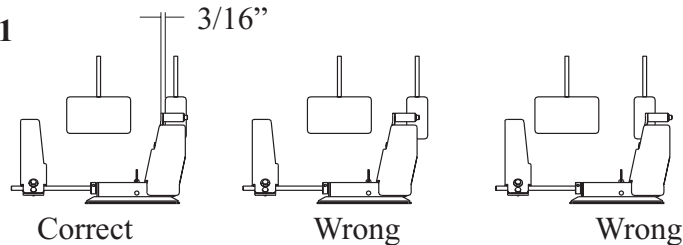
Step 1) Determining Base Plate Location

With the Base attached to the LFGP (Left Foot Gas Pedal) assembly, follow these three steps to determine the Base Plate location.



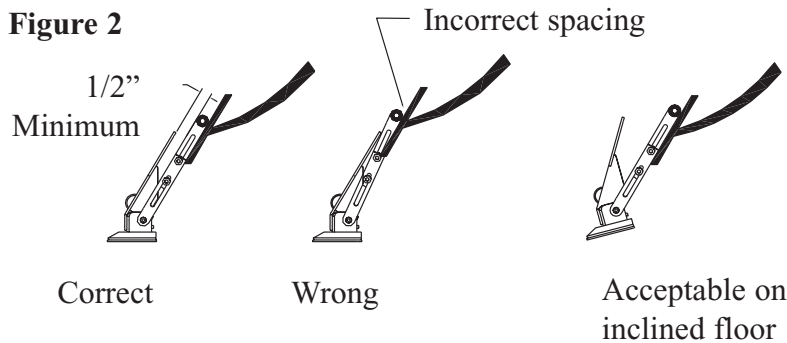
1A) Left to Right: A 3/16" (approx.) gap should be visible between the flat part of the Actuator Arm Assembly and the OEM gas pedal.

Figure 1



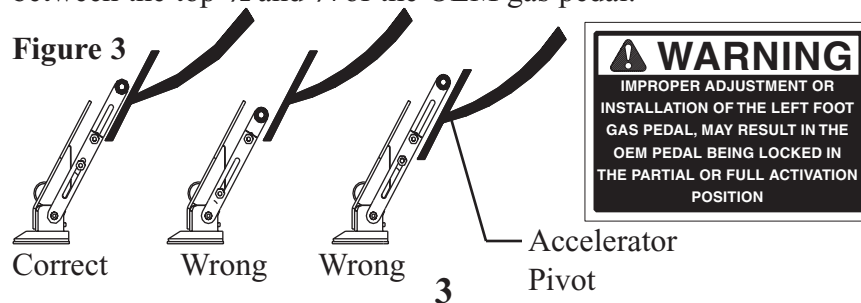
1B) Front to Back: The adjustable slide of the Actuator Arm should be parallel with the OEM gas pedal.

Figure 2



1C) Actuator Arm Adjustment: For OEM (Original Equipment Manufacturer) gas pedals with a pivot: The Roller should be located above and close to the pivot (roller must not be located even with, or below the OEM gas pedal pivot point). For solid OEM gas pedals (no pivot): The Roller should be located between the top 1/2 and 3/4 of the OEM gas pedal.

Figure 3



Step 2) Marking Base Plate Location

Once the proper location of the Left Foot Gas Pedal is determined, mark by placing tape along 2 edges of the Lockout Base.



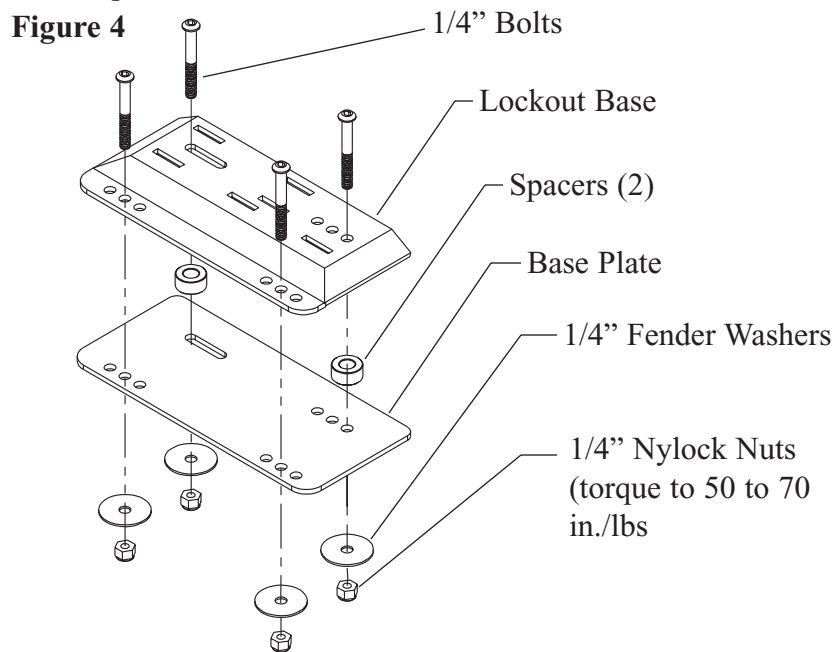
Step 3) Mount LFGP and Base Plate

Place LFGP Base Plate on the floor in the area previously marked (the slot in Base Plate should be toward the front, left side as shown in figure 4).

Check under vehicle and under the carpet to make sure you don't drill into unwanted objects (such as... gas lines, brake lines, wires, etc.).

Using the Base Plate as a template, drill four holes for the mounting bolts using a 9/32" drill bit.

Secure LFGP Base Plate, Spacers, and Base to the floor using the bolts provided.



Step 4) Attach LFGP to Base

A. Hold on to the LFGP Accelerator Guard and Actuator Arm with one hand.

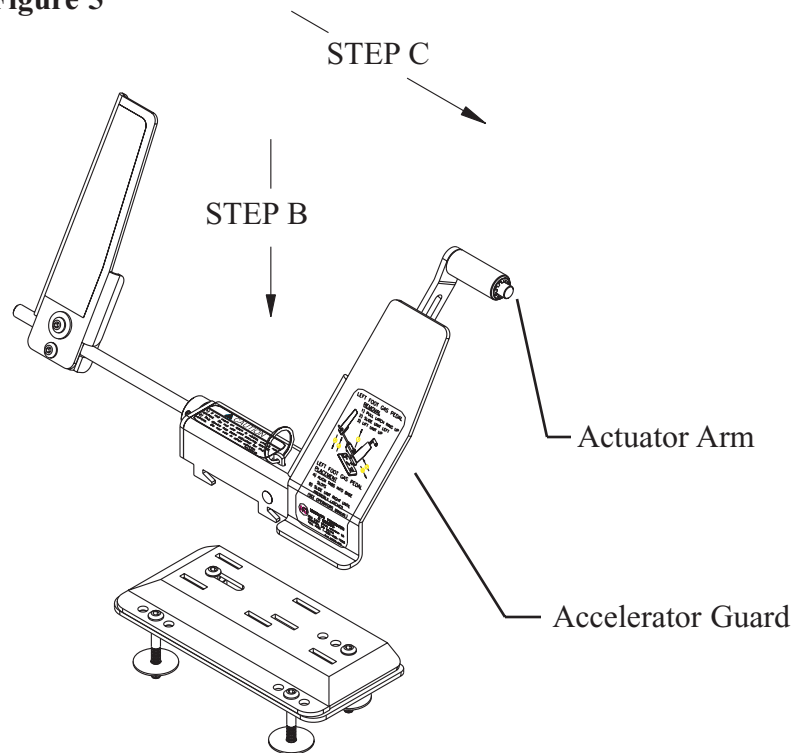
B. Push the LFGP down into the slots of the Base.

C. Slide the LFGP to the right until it latches. At this time be sure the LFGP is secure and the Latch is completely engaged. Refer to caution note.

⚠ CAUTION

1) If the red mark on the latch is visible, unit is not latched. Do not use until securely latched.
2) This device has been adjusted for this vehicle. Do not use in other vehicles.

Figure 5

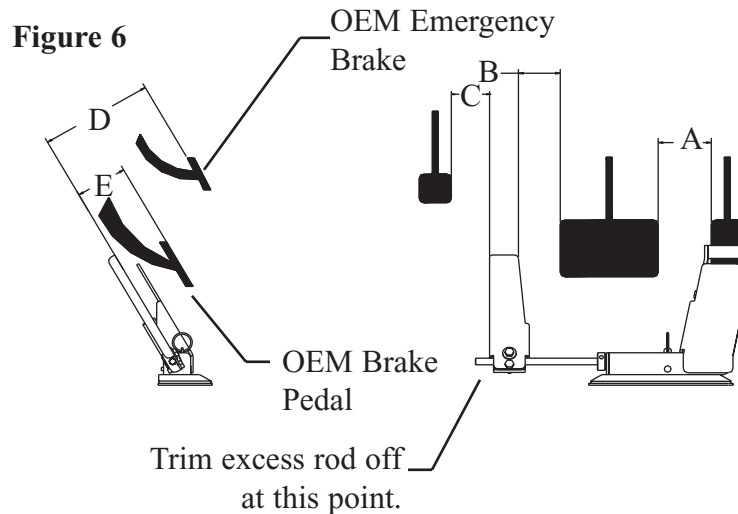
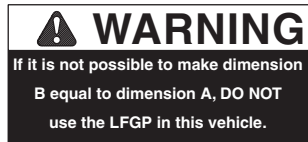


Step 5) Adjusting Left Foot Gas Pedal Position

Dimension A is equal to Dimension B: Distance (left to right) between OEM Gas Pedal and OEM Brake Pedal should be the same as the distance between OEM Brake Pedal and LFGP.

You must be able to completely activate the Emergency Brake without interfering with the Left Foot Gas Pedal. (Dimension C and D)

Dimension E: Distance (front to back) between OEM Gas and Brake Pedals should be approximately the same as distance between LFGP and OEM Brake Pedal.



Trim off any excess rod length on the bottom Activator Arm.

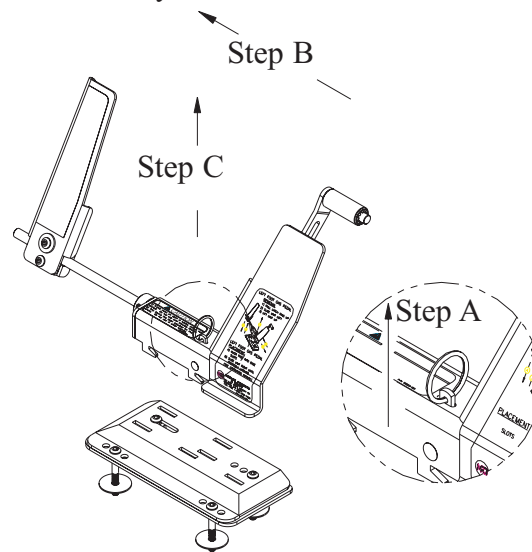
Install the Warning Decal on the vehicle windshield or drivers window.



Step 6) Removing LFGP From Base

- A. Lift the key ring on LFGP assembly.
- B. While lifting and holding the key ring up, slide the Lockout Base to the left.
- C. When the assembly begins to move, release the key ring and continue to slide the assembly left until it can be lifted out of Base.

Figure 7



Step 7) Post Installation Inspection by Installing Dealer

- 1) Make sure that all the fasteners are secure and the Base is rigid with the vehicle floor.
- 2) Verify the Left Foot Gas Pedal latching mechanism works properly by removing and attaching the mechanism three or more times. When attaching, notice:
 - A) The Base latches in the slots with minimal effort. The latch should engage so the red line on the latch does not show.
 - B) When removing, the latch should disengage smoothly, and the Base should slide out of the slots with little effort. It should not be necessary to use any tools to remove the LFGP from the Base.

Post Installation Inspection Continued

3) Verify correct operation of the Left Foot Gas Pedal:

A) With the engine off, make sure the LFGP operates freely and has the proper clearances outlined in these instructions.

B) Verify the force it takes to operate the Left Foot Gas Pedal is similar to the force it takes to operate the OEM accelerator.

C) Verify the operation is a smooth motion. It should not stick at any point.

D) Completely depress LFGP. It must not lock in a partial or fully accelerated position.



4) Press on the Accelerator Guard lightly to determine that it will not contact the Actuator Arm. If it does, refer to step 1B to readjust

5) Make sure the OEM Parking Brake Pedal or mechanism does not activate or interfere with the operation of the LFGP.

6) Test drive the vehicle yourself, after installation or any adjustments, to ensure the LFGP is functioning properly. Verify that the vehicle will go into passing gear and return to idle.

7) Make sure the customer has had proper training by a Certified Driver Rehabilitation Specialist.

8) Ensure the Left Foot Gas Pedal has been adjusted for the driver's comfort and fit.

9) Record vehicle information on decal located on back side of Accelerator Guard. (To ensure that if the LFGP is removed, it is reattached into the same vehicle.)

Vehicle I.D.		
Year	2002	Make Dodge
Model	Caravan	

10) Give this manual to the customer.

Left Foot Gas Pedal Operating Instructions

We recommend all customers have a driver evaluation performed by a qualified evaluator.

The Left Foot Gas Pedal transfers the force of the drivers left foot to the OEM accelerator pedal. It operates the same way as the OEM accelerator pedal, except the left foot is used instead of the right foot.

The Left Foot Gas Pedal can be quickly attached (refer to step 4, figure 5) and is to be used by TRAINED OPERATORS ONLY.

The Left Foot Gas Pedal is designed to be quickly detached (refer to step 6, figure 7) and MUST BE REMOVED IF SOMEONE OTHER THAN THE TRAINED OPERATOR IS USING THE VEHICLE.

The accelerator guard is designed to guard the OEM accelerator from unintentional operation. The accelerator guard is NOT A FOOT REST. Except for performing a post installation inspection, DO NOT PUSH ON THE ACCELERATOR GUARD FOR ANY REASON.

Alternate between the LFGP and the brake with left foot to further familiarize yourself with the function.

Before each use:

Make sure the Left Foot Gas Pedal is properly seated in the Base, and the red mark is not visible.

Make sure the Left Foot Gas Pedal operates freely and properly.

Make sure nothing is obstructing the operation of the Left Foot Gas Pedal (i.e.. Keep floor clean of rocks, mud, ice, and any form of debris)

Make sure all fasteners are secure.

Maintenance

As the owner and user of the Left Foot Gas Pedal, it is your obligation to follow through with the required maintenance.

Regular cleaning is required to ensure optimum performance.

It is required that every 3 months:

Vacuum out the Base and clean out any debris from under the Base.

Verify that the LFGP Roller moves freely.

Verify that the LFGP Latch moves freely. If needed, a drop of light weight oil may be applied to the latch, latch pin, and/or spacer. Remove any excess oil.

It is required that every 6 months:

Have an authorized Mobility Products & Design dealer inspect, and maintain the unit. Document any work completed on the chart provided.

Dealer Signature	Date	Maintenance or Service Performed	Parts Replaced

Warranty Policy

Mobility Products & Design products are warranted to be free from defects in material and workmanship for a period of two (2) years from the date of the original customer's purchase. All warning messages on labels must be adhered to strictly, and regular maintenance procedures must be followed.

This Warranty is effective only if the products or parts of the product have been installed in accordance with Mobility Products & Design's written recommendations and with established installation practices and by an authorized dealer of Mobility Products & Design. Mobility Products & Design does not assume liability for defective products not manufactured or supplied by it, even though some products are used in conjunction with Mobility Products & Design products. Any and all claims for Warranty adjustments must be originated within the twenty-four (24) months Warranty period and must be submitted by an authorized Mobility Products & Design dealer in accordance with established Mobility Products & Design Warranty Claim procedures. The properly completed Warranty Registration must be on file at the office of Mobility Products & Design, for any Warranty claim to be considered. The Warranty period begins upon installation of the product or the date the product is placed in service.

If, within such a Warranty period, any part of the product shall be proved to Mobility Products & Design's satisfaction to be defective, such part shall be repaired or replaced at Mobility Products & Design's option. Mobility Products & Design's sole obligation and the customer's exclusive remedy, hereunder, shall be limited to such part repair or replacement.

Service under this Warranty is available from the authorized Mobility Products & Design dealer who installed the equipment. If such dealer is not available, you may call (800) 488-7688 for the name of another servicing dealer or visit our website www.mobilityproductsdesign.com and click on Dealer Locator.

NO RETURNS WILL BE ACCEPTED WITHOUT FIRST OBTAINING A SHIPPING AUTHORIZATION AND WARRANTY AUTHORIZATION RETURN GOOD NUMBER FROM MOBILITY PRODUCTS & DESIGN SHIPMENTS SENT FREIGHT COLLECT OR C.O.D. WILL BE REFUSED, UNLESS PREVIOUSLY AUTHORIZED.

Mobility Products & Design, reserves the right to inspect any product or part which is subject of a Warranty claim in order to make final determination of the validity of such claim. Damage due to misuse, improper maintenance, improper installation, or damage from mishap or collision, is not covered.

In any event, Mobility Products & Design's liability extends only to the repair or replacement of such components as are necessary to restore the product to normal operating condition. All other claims or liabilities are expressly denied.

This Warranty states the entire liability of Mobility Products & Design with respect to the products it manufactures. It is exclusive; and in lieu of all warranties expressed or implied, including but not limited to implied warranties of merchantability and fitness for particular use unless applicable by law, and then shall not extend beyond the minimum law or the duration of the express Warranty whichever is less. Under no circumstances will Mobility Products & Design be responsible for incidental or consequential damage arising out of the use of any of its products or any breach of this warranty, and any such damages are specifically excluded from this Warranty.

Some states do not allow limitations on how long implied warranties last, so the above limitation with respect to implied warranties may not apply. Some states do not allow the exclusion or limitation of incidental, or consequential damages, so the above limitation or exclusion with respect to incidental or consequential damages may not apply.

This Warranty gives you, the customer, specific legal rights and you may have other rights which vary from state to state.

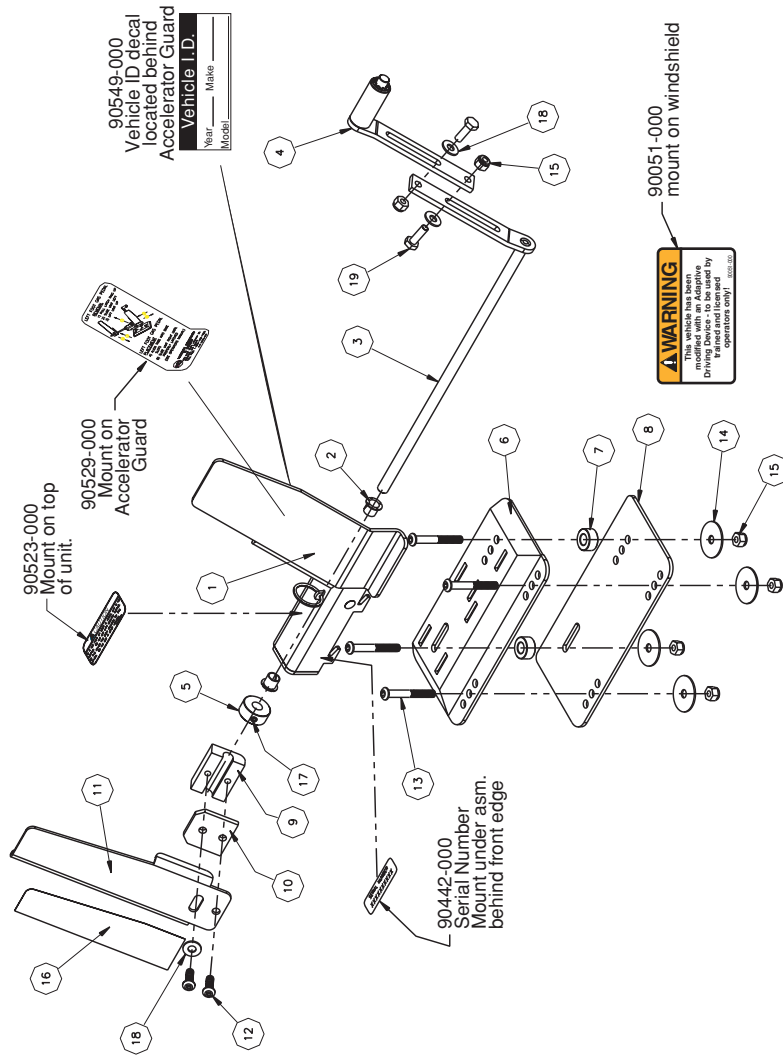
AGAIN, THE WARRANTY REGISTRATION CARD MUST BE COMPLETELY FILLED OUT, SIGNED AND IN POSSESSION OF MOBILITY PRODUCTS & DESIGN'S WARRANTY DEPARTMENT WITHIN THIRTY (30) DAYS AFTER INSTALLATION TO BE RECORDED AND RECOGNIZED. NO WARRANTY WILL BE AUTHORIZED UNLESS THIS IS COMPLETED.

This Warranty is to the original purchaser only and is not transferable, and applies only to vehicles with power brakes, power steering and automatic transmission. Any products installed on vehicles without these features is strictly prohibited.

This Warranty extends only to those products that are installed or used in transportation vehicles. Any other use of any of the products manufactured by Mobility Products & Design, other than as prescribed, are not authorized by Mobility Products & Design, and Mobility Products & Design will make no warranty with respect to such non-conforming, unauthorized use or installation. Any changes to the product by any person or dealer, will also cause the Warranty to be null and void. Any person or dealer who uses or installs any product of Mobility Products & Design for a use other than stated above, does so at their own risk with the full knowledge and understanding that the Warranty is null and void. Any use other than in transportation vehicles for handicapped persons, unless agreed to and approved in writing by the company shall render the Warranty null and void.

This Warranty will not apply if the product is used or submitted in contests or testing programs. Your vehicle must conform to all Federal Motor Vehicle Safety Standards (FMVSS) for the Warranty to be valid.

Parts Diagram



Parts Listing

ITEM	PART NO.	QTY	DESCRIPTION
1	N/A	1	NOT SOLD SEPARATELY
2	91252-000	2	NYLINER
3	69185-000	1	WELD, LFGP BOTTOM ACTUATOR ARM
4	69751-000	1	ASSEMBLY, LFGP UPPER ACTUATOR ARM
5	69144-000	1	COLLAR, LEFT FOOT GAS PEDAL
6	69193-000	1	LFGP LOCKOUT BASE
7	69198-000	2	LFGP SPACER
8	69194-000	1	LFGP LOCKOUT BASE PLATE
9	69141-000	1	CLAMP
10	69221-000	1	LFGP CLAMP PLATE
11	69195-000	1	LFGP PEDAL
12	81068-000	2	1/4 - 20 x 3/4 BHCS SS
13	81090-000	4	1/4 - 20 x 2 BHCS SS
14	82008-000	4	1/4 WASHER, FENDER
15	83011-000	6	1/4 - 20 NUT, NYLOCK
16	99296-000	1	LFGP SAFETY TRACK
17	84027-000	1	1/4 - 20 x 1/4 SET SCREW
18	82013-000	3	1/4 WASHER FLAT SAE
19	80013-000	2	1/4 - 20 x 3/4 HHCS

