

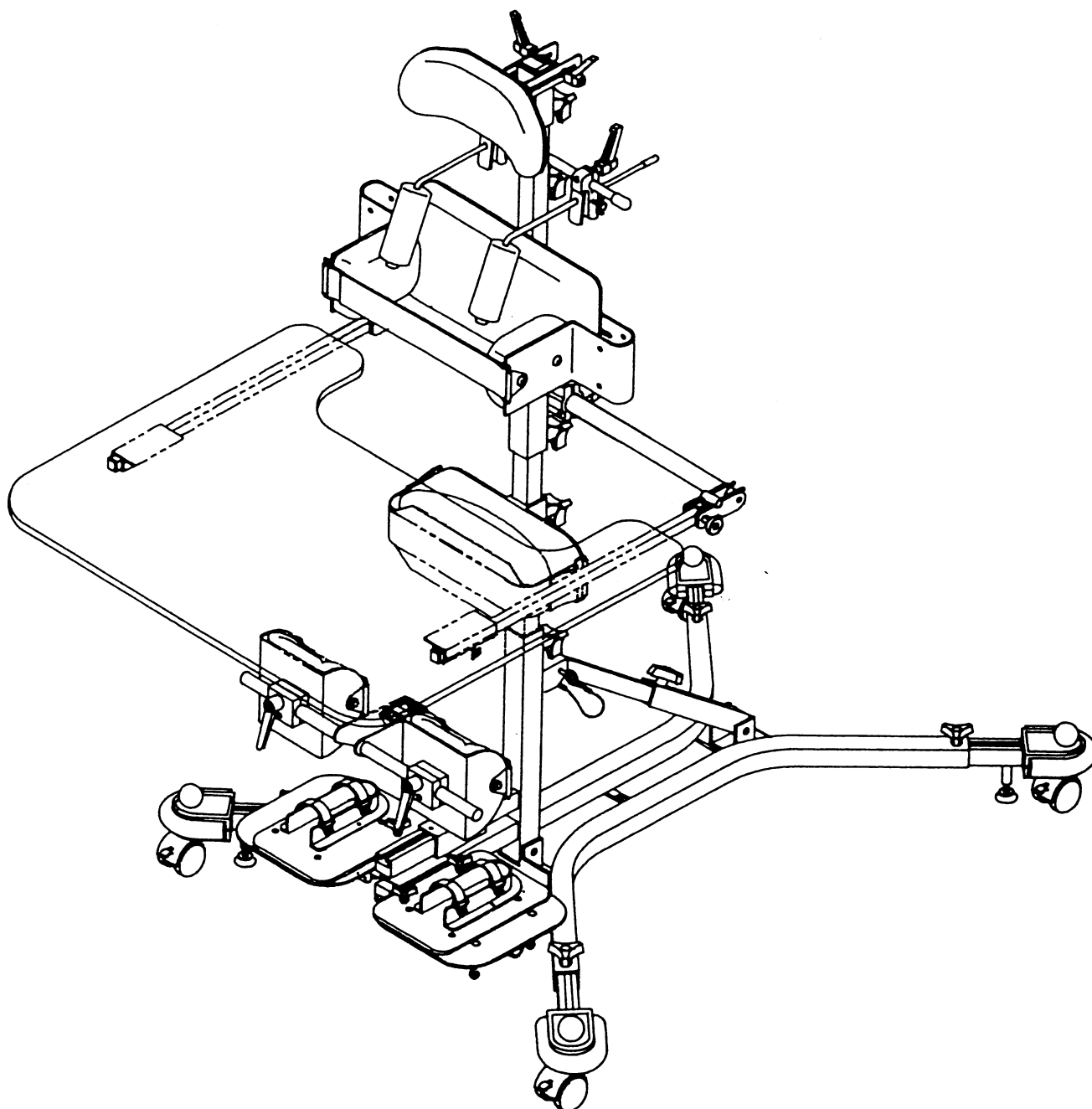
**P.O. BOX 1739 Matthews, NC 28106-1739**

**Telephone 704-882-0668 Toll-free 800-336-7684**

**FAX 704-882-0751 E-mail [snugseat@worldnet.att.net](mailto:snugseat@worldnet.att.net)**

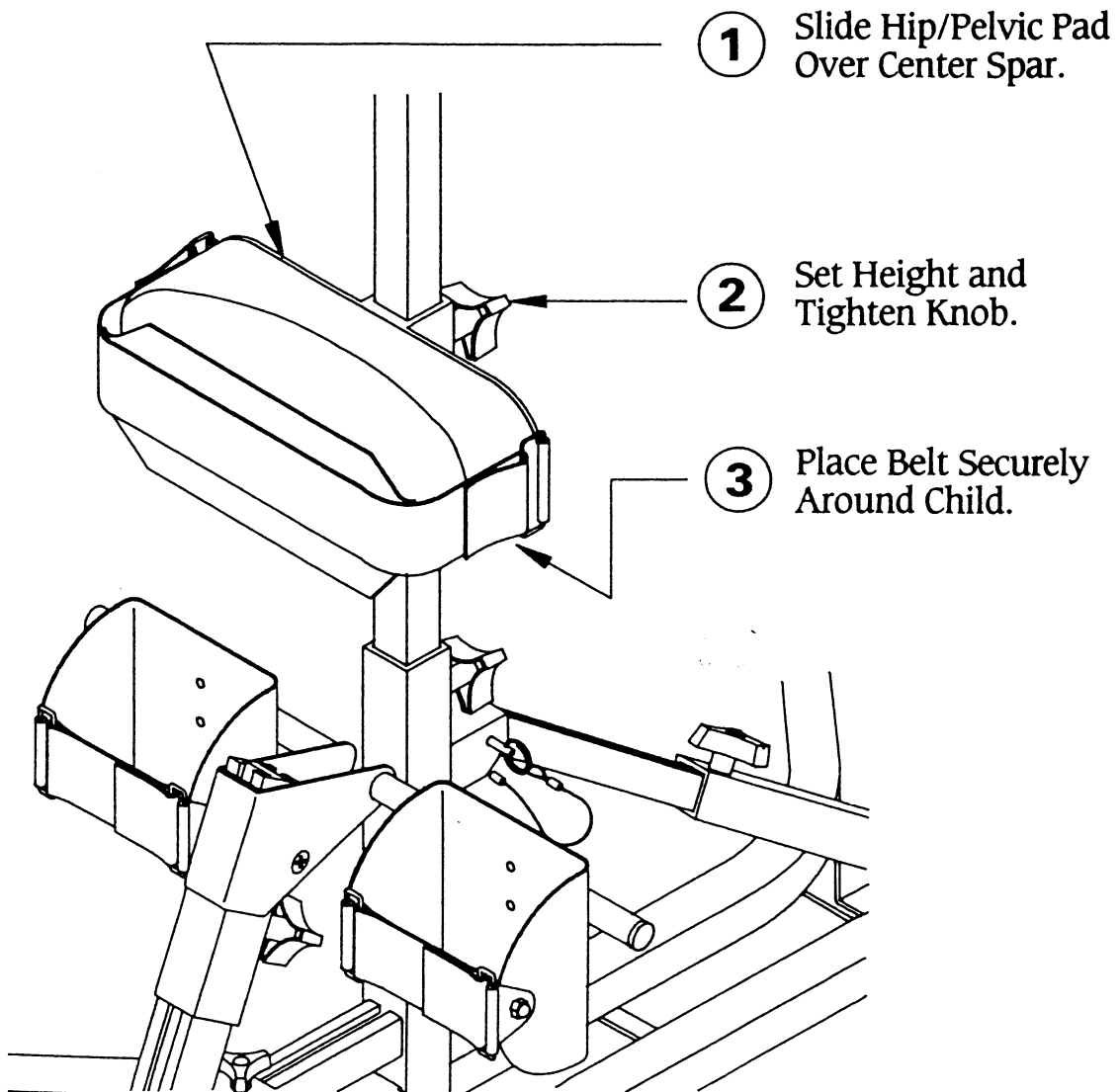
# UPRIGHT & SUPINE CONFIGURATION

NOTE: The illustrations in these assembly instructions depict a very limited number of examples of how the unit may be set up. (For example: the footrest and the knee support assemblies may be placed together on the upper bar for smaller children, two lateral supports may be used, etc.). Please call us if you have any questions concerning how to set up the unit.



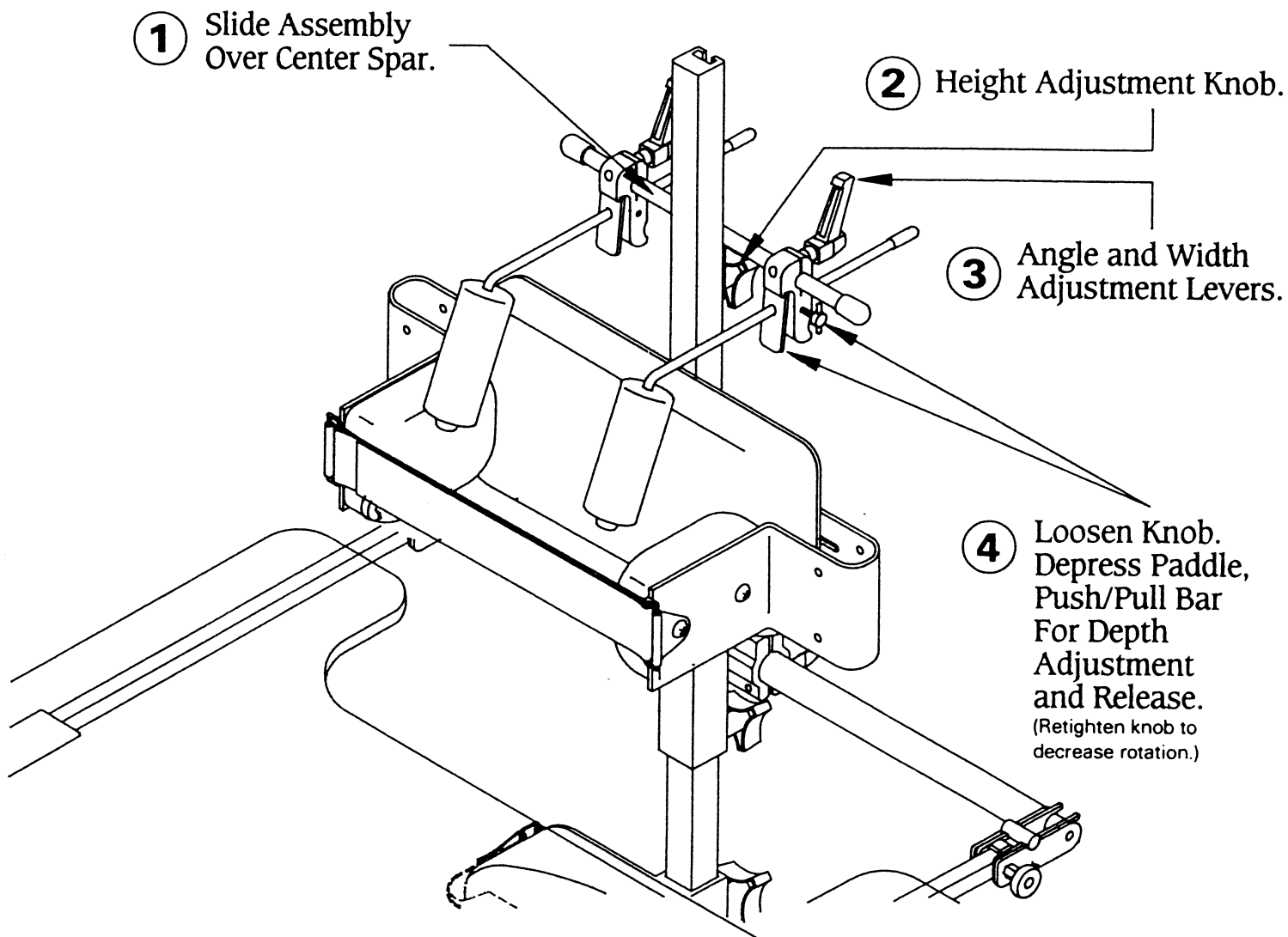
# HIP/PELVIC ASSEMBLY

Position of this assembly is for illustration purposes only.  
Actual position will be determined by child's needs.

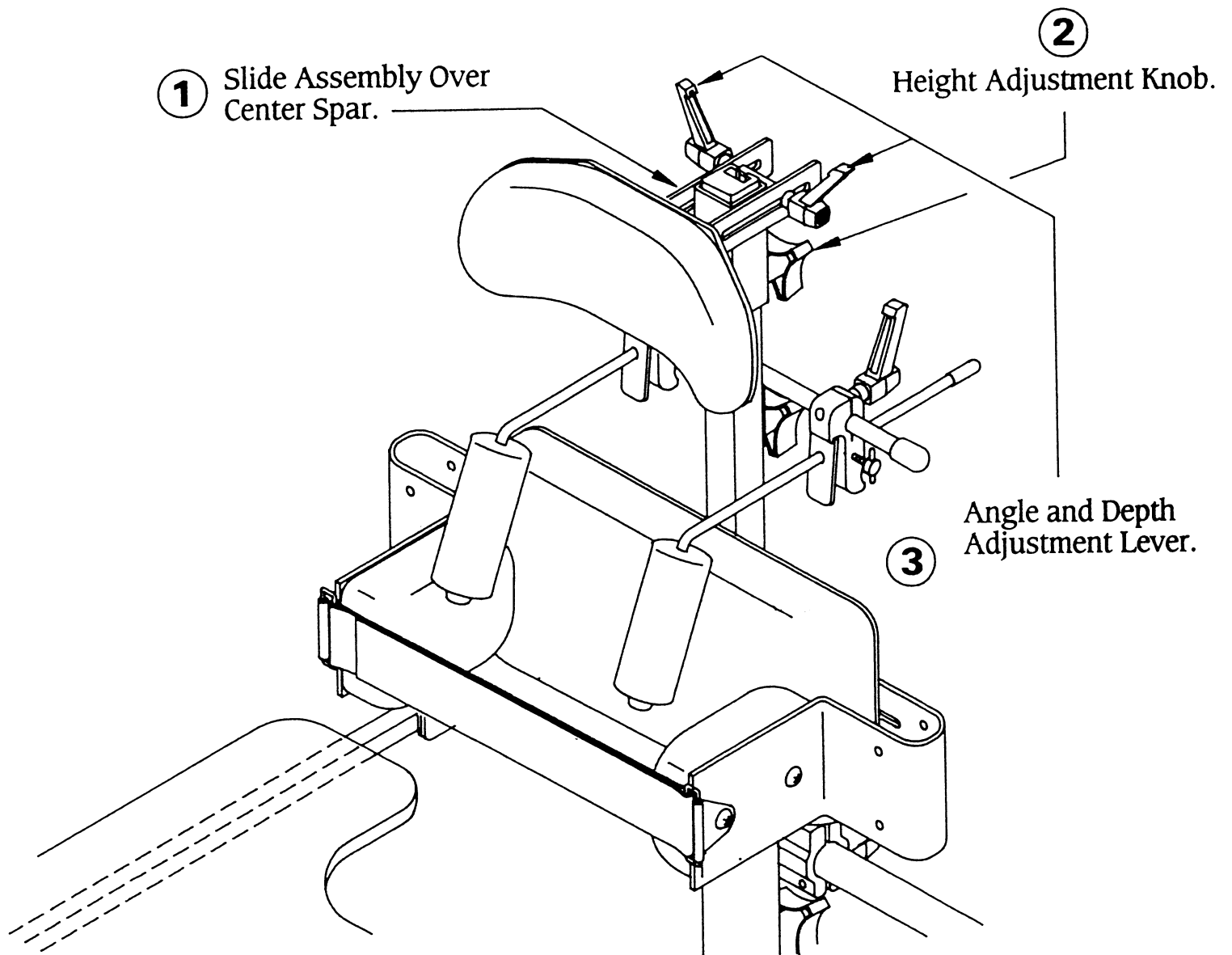


# CLAVICULAR ASSEMBLY

CAUTION: Headrest or sternal pad must be installed to prevent injury.

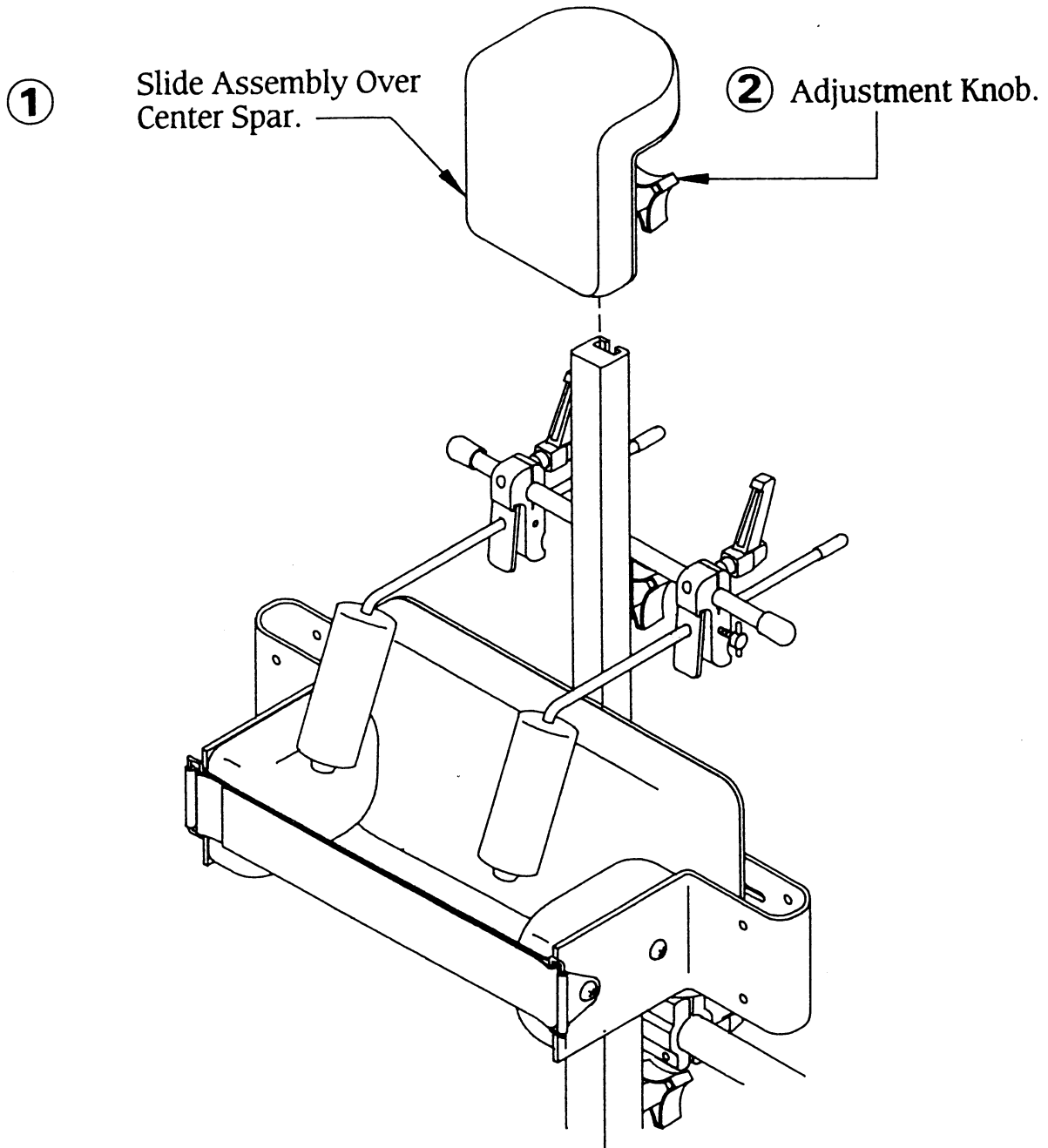


# HEADREST ASSEMBLY

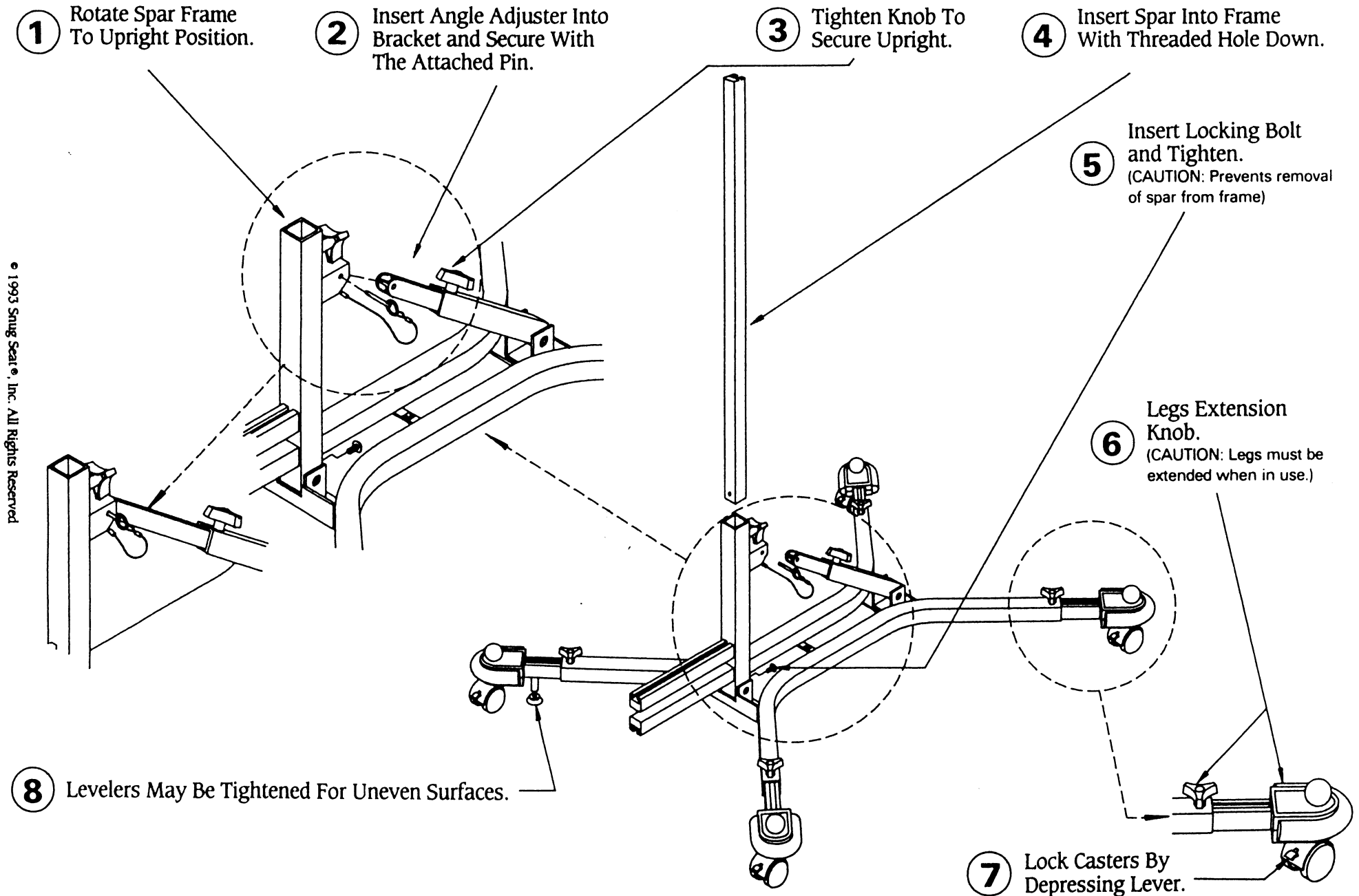


# STERNAL PAD

CAUTION: This assembly must be used when central spar is exposed.

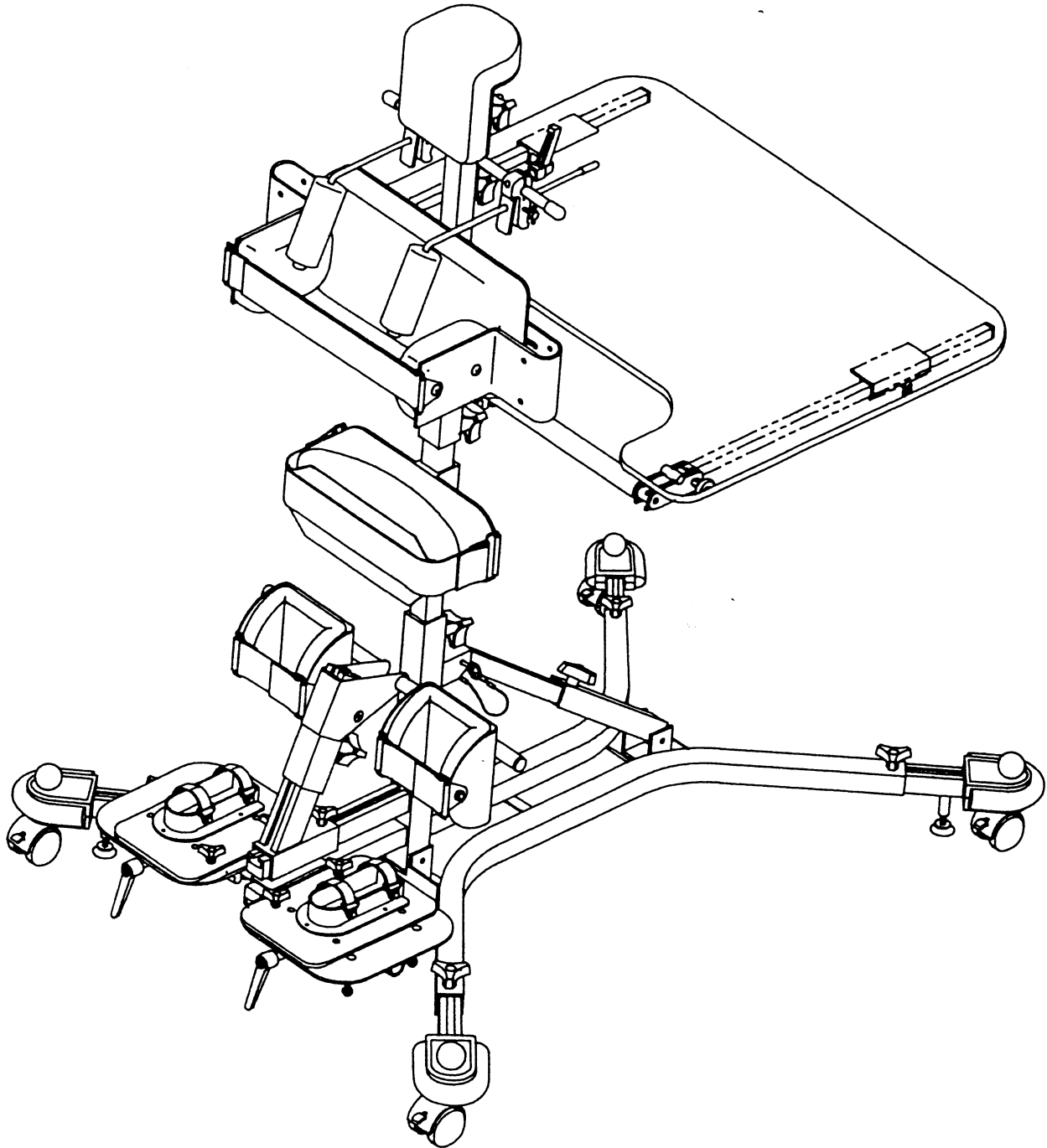


# BASE ASSEMBLY



# PRONE CONFIGURATION

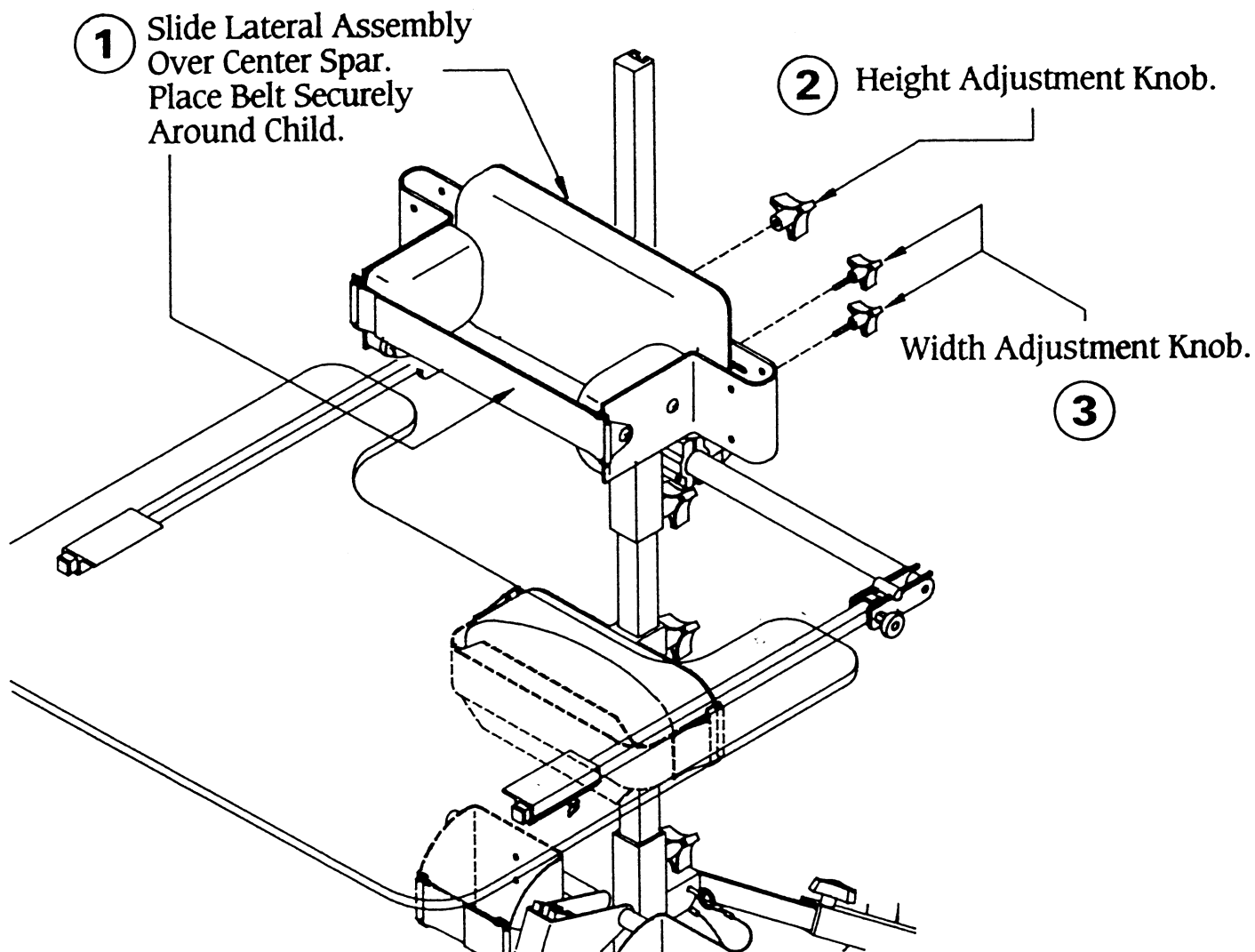
NOTE: The illustrations in these assembly instructions depict a very limited number of examples of how the unit may be set up. (For example: the footrest and the knee support assemblies may be placed together on the upper bar for smaller children, two lateral supports may be used, etc.). Please call us if you have any questions concerning how to set up the unit.



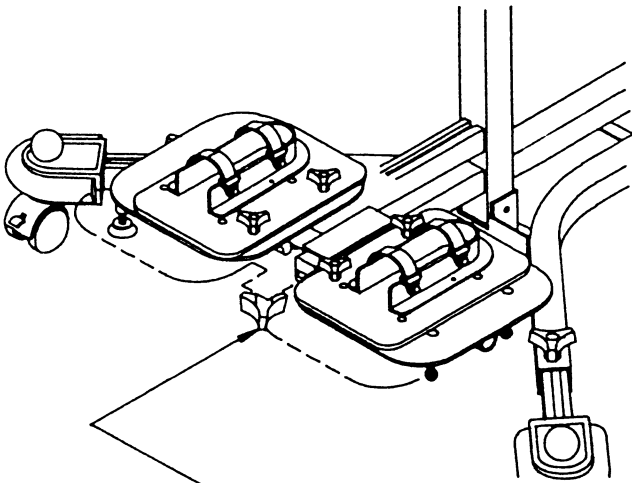


# LATERAL ASSEMBLY

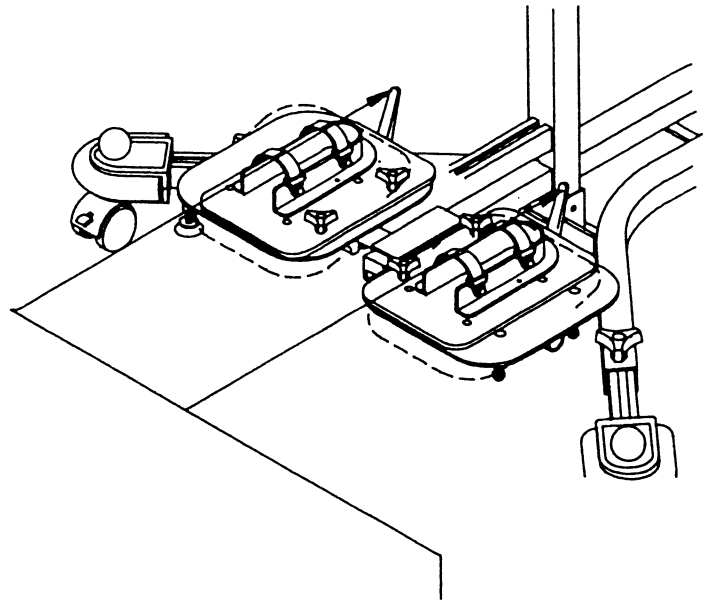
Position of this assembly is for illustration purposes only.  
Actual position will be determined by child's needs.



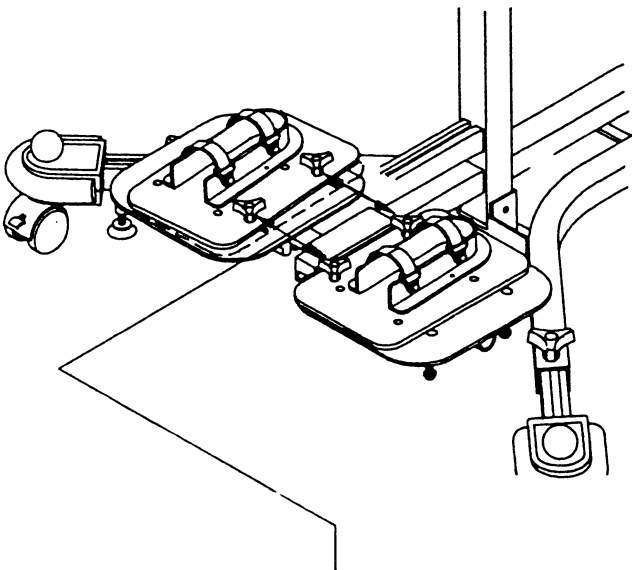
# FOOTREST ADJUSTMENT



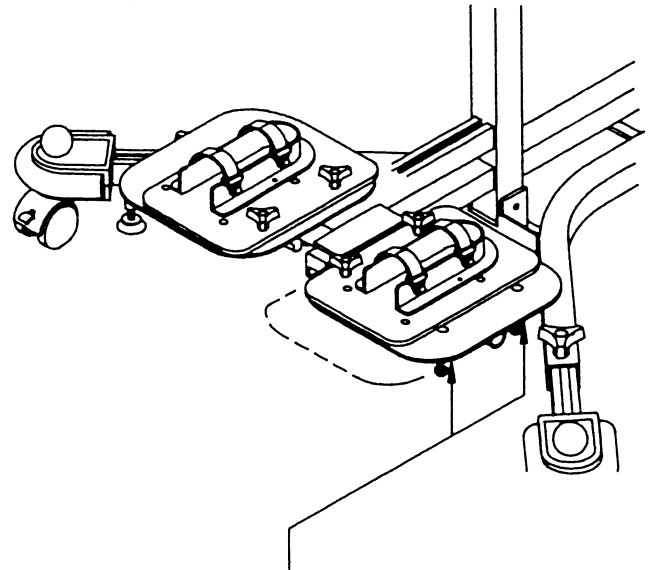
**1** Footrest Depth Adjustment.



**2** Footrest Angle and Adjustment Levers.

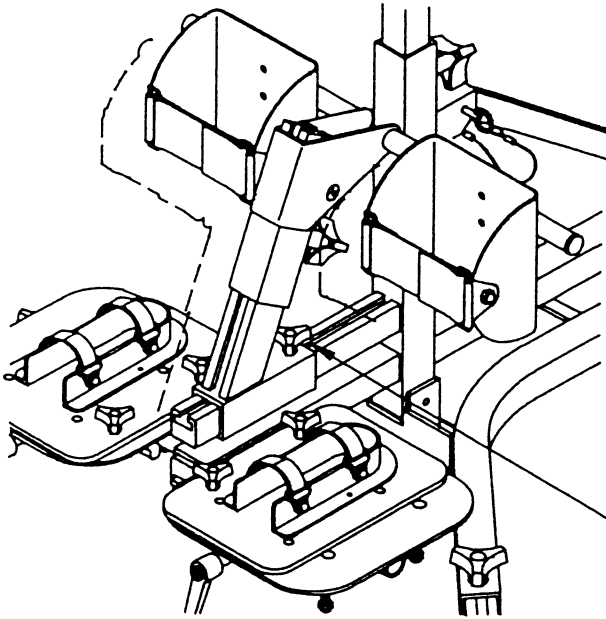


**3** Rotation and Width Adjustment Knob.



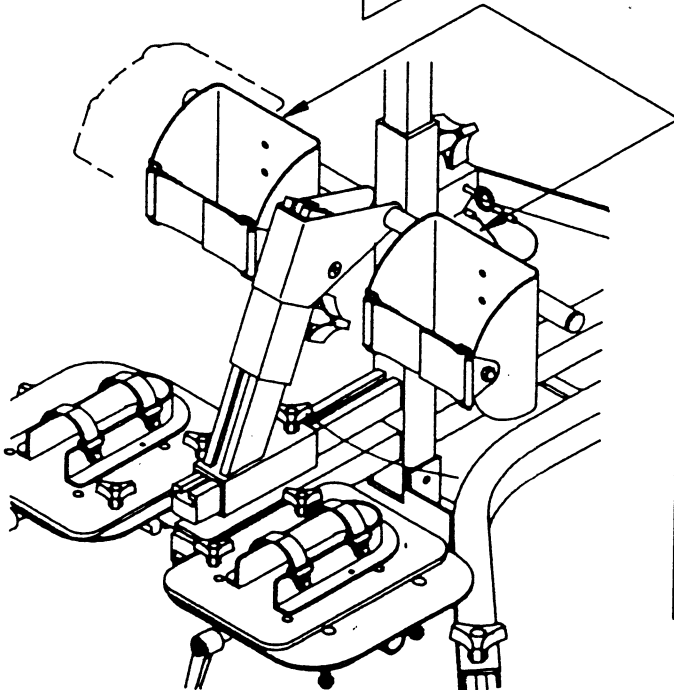
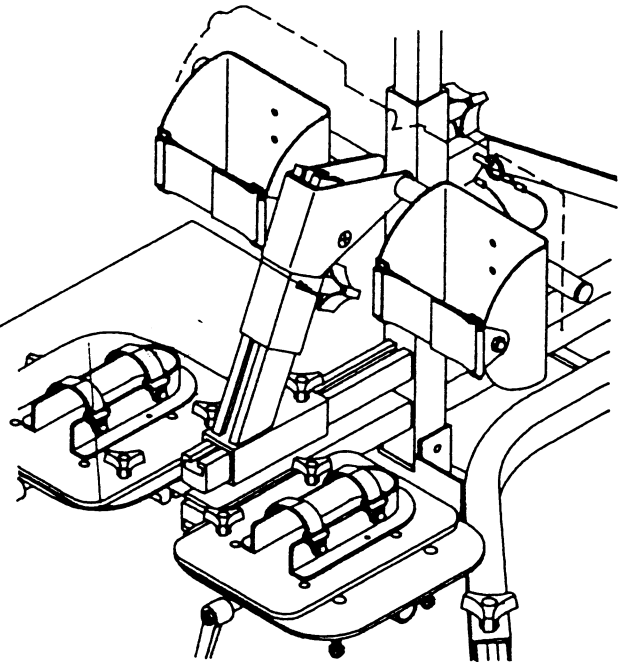
**4** Individual Depth Adjustment Knob.

# KNEE ADJUSTMENT



**1** Depth Adjustment Knob.

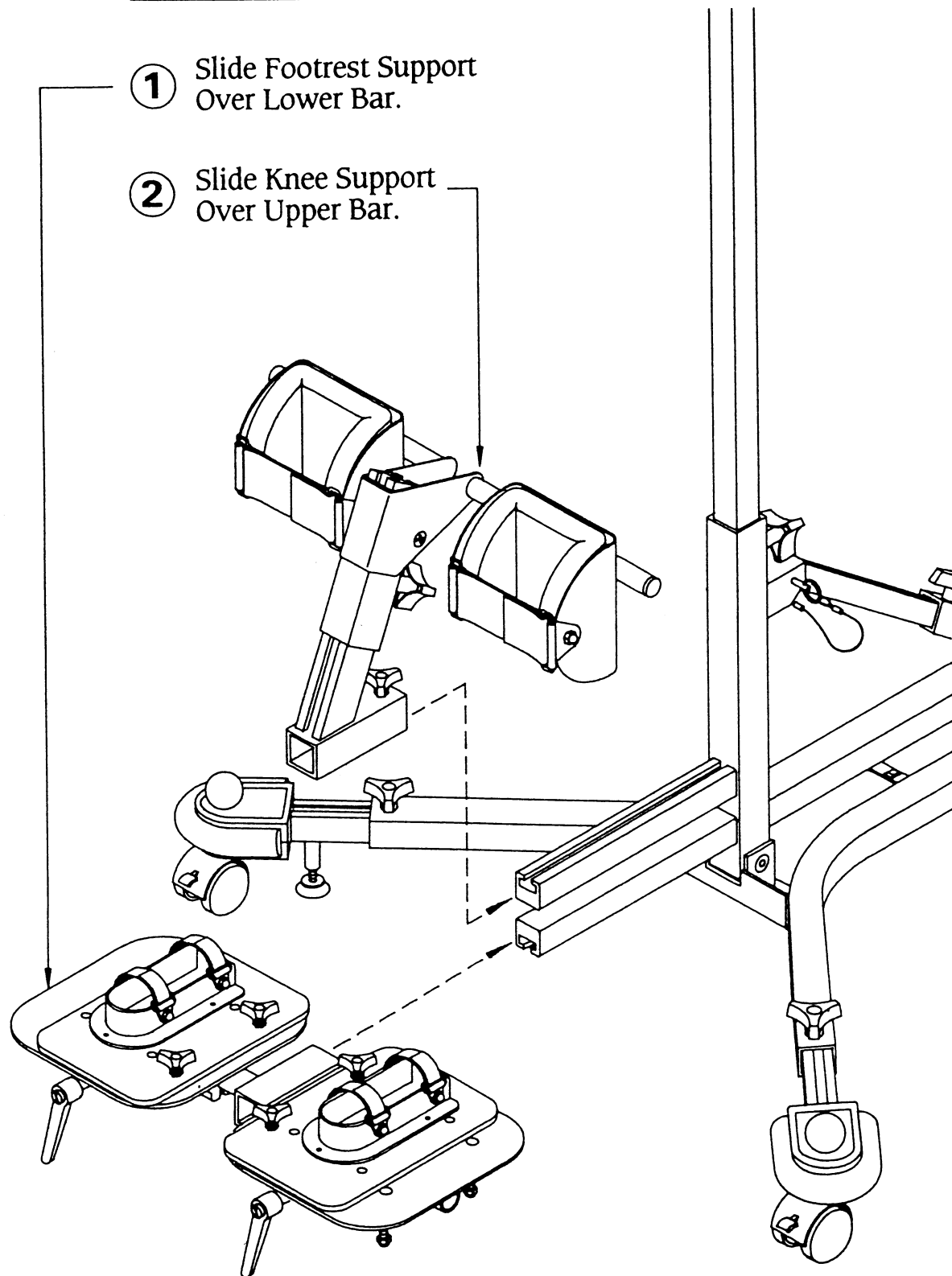
**2** Height Adjustment Knob.



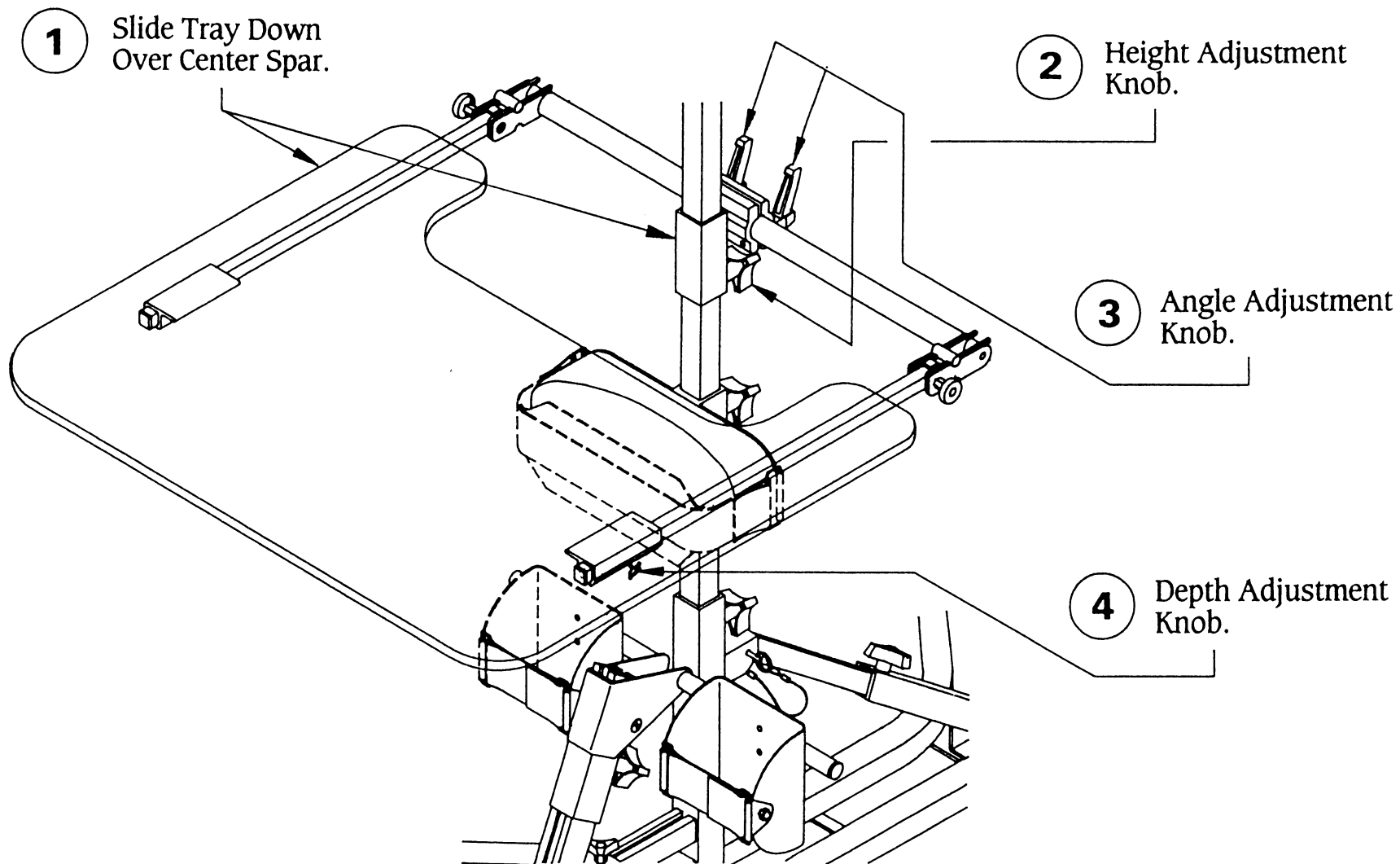
**3** Width and Angle Adjustment Knobs.  
To Obtain Additional Knee Height, Remove Knee Pads From Bar and Reinsert In Offset Position.

# FOOTREST & KNEE SUPPORT ASSEMBLY

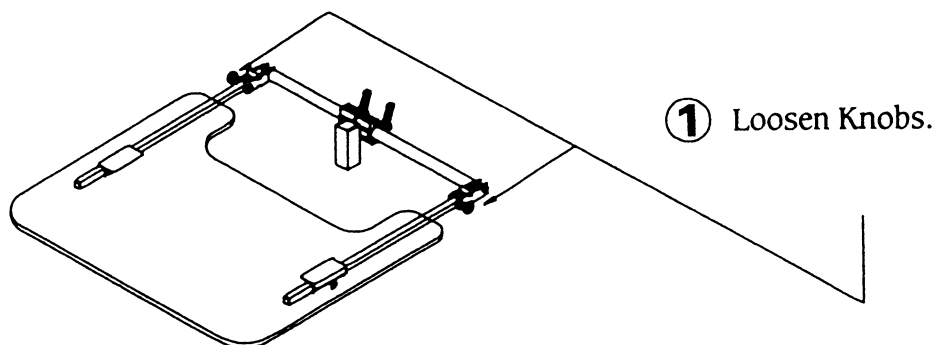
Footrest and knee supports may be reversed as shown on opposite page.



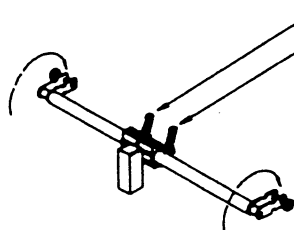
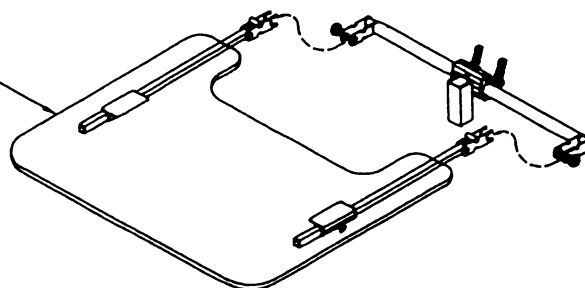
# TRAY ASSEMBLY



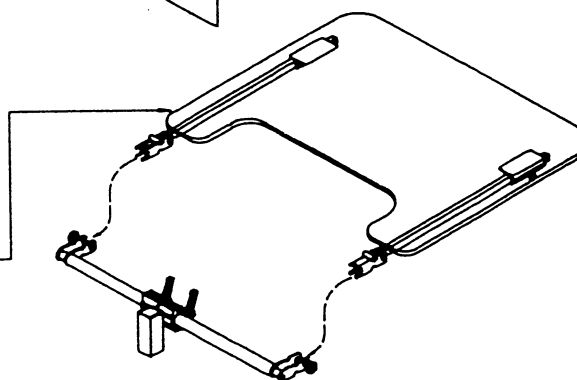
# TRAY POSITIONING



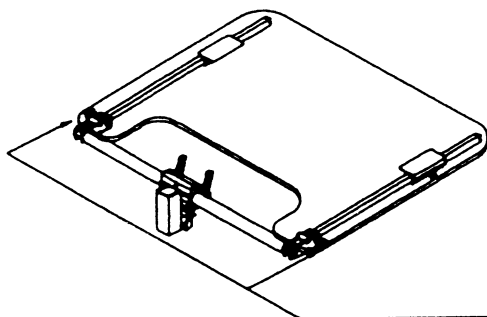
② Rotate Tray Up and Pull From Supports.



③ Loosen Levers and Rotate Supports 180° Degrees.



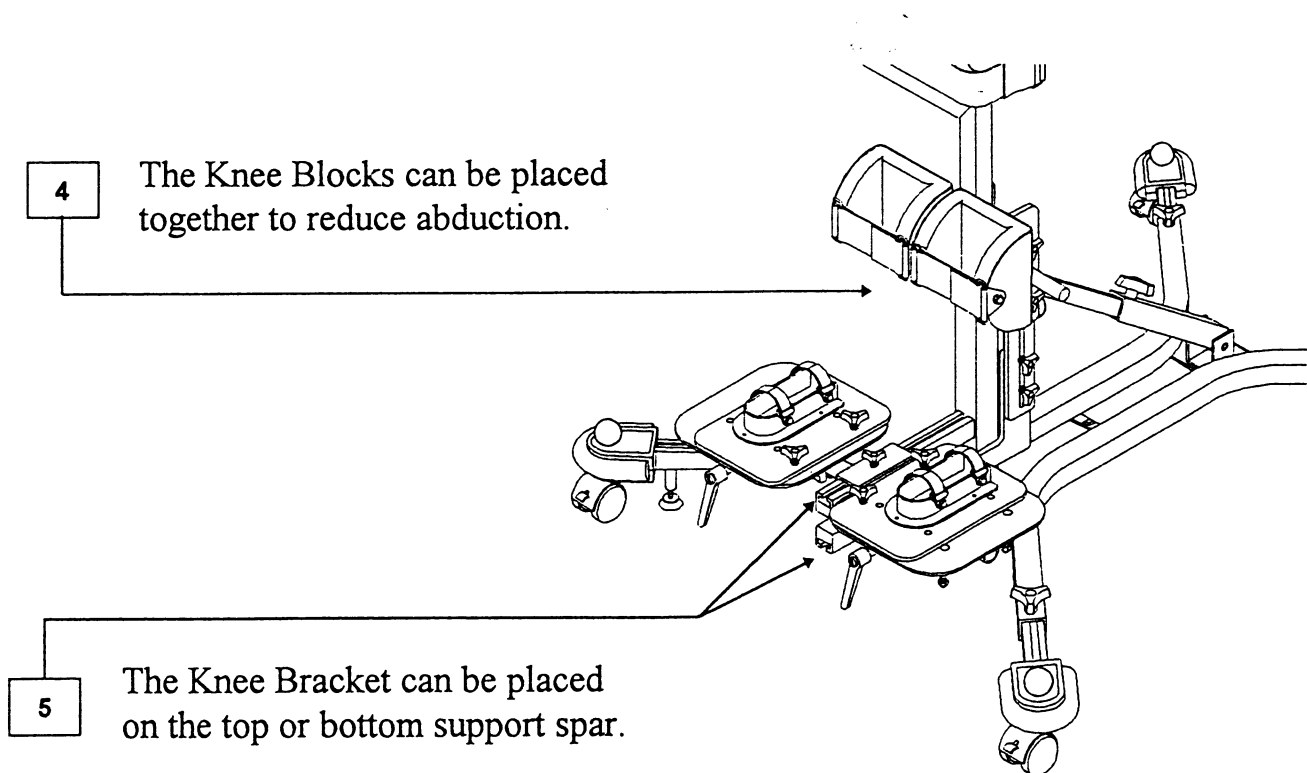
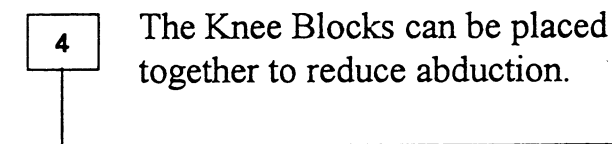
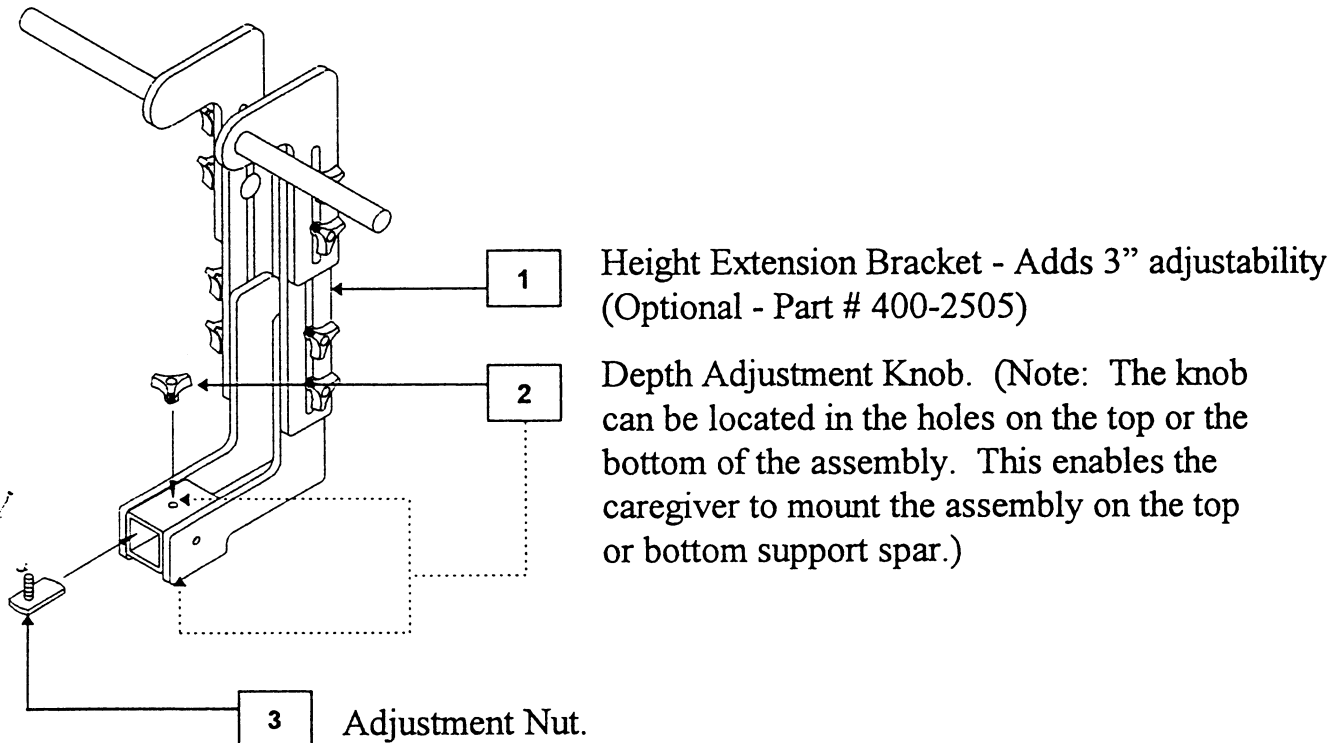
④ Insert Into Supports. Rotate Downward Until Knuckles Lock Into Grooves In Support.



⑤ Tighten Knobs.

# SMALL KNEE ASSEMBLY

The Knee Blocks can be interchanged between the small, standard, and tall assemblies.



NOTE: The Giraffe footplates can be adjusted so that they come completely together to reduce abduction. The footrest depth adjustment knob on units manufactured before 11/1/94 must be replaced with a new smaller knob (Part # 400-1201). Contact our Customer Service Department for assistance.