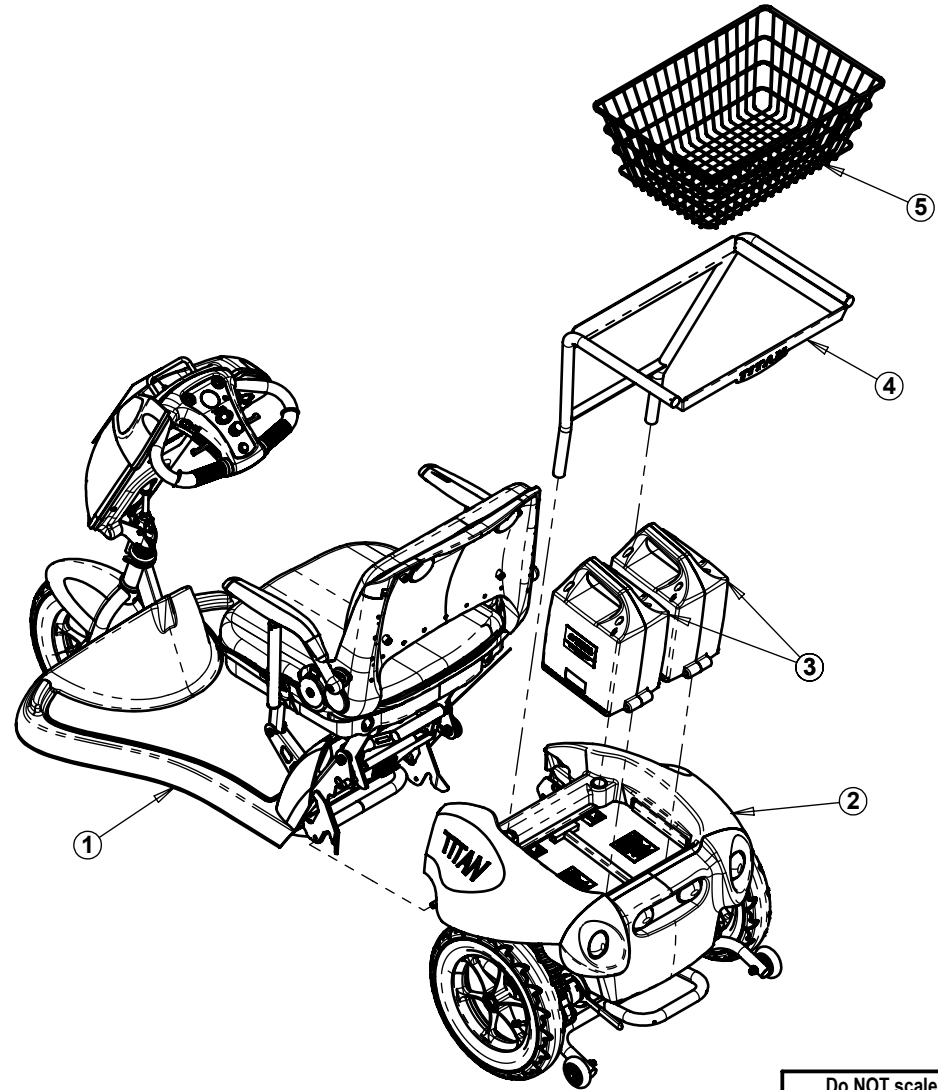



Titan 3 Wheel Maintenance Drawings

Item	Qty.	Cat No.	Description
1	1	See Table	Front Assembly - 3W - Red/Blue/Grey
2	1	See Table	Rear Assembly - Red/Blue/Grey
3	2	22-74-001	Battery Assembly
4	1	63-75-008	Basket Frame w/Titan Name
5	1	63-75-034	Rear Basket
6	1	61-74-003	Charger 24V 3A



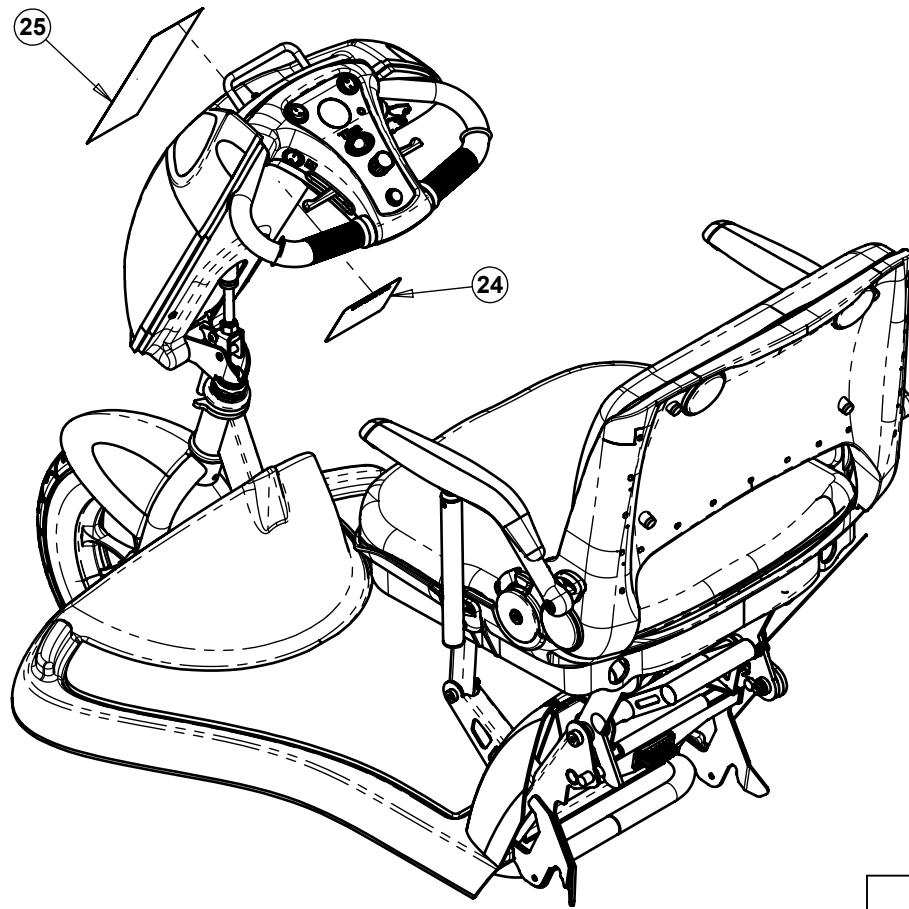
REMARKS:
1. Charger not shown

Name	Cat. No.	Front Assembly - 3W (Part No. 1)	Rear Assembly (Part No.2)
Titan 3W - Red	20-75-001	20-75-001	20-76-002
Titan 3W - Blue	20-75-002	20-75-002	20-76-004
Titan 3W - Grey	20-75-003	20-75-003	20-76-006


Do NOT scale from drawing.			Drawn		L.L.	Drawing No.		 TZORA Active Systems Ltd. <small>Tel: 972-3-5398999 Fax: 972-3-6320879 www.tzora.com</small>	
Approved ONLY with stamp.			Checked			70-75-001a			
			Production			Part Name:		Titan 3W - Red/Blue/Grey	
			Confirmed						
				Date	Name				
			General Tolerances:						
			Holes Dia.	Linear	Angular	Date created	Scale	Sheet	Cat. No.
Date	Confirmed	Update	± mm.	± mm.	± °	10 May 2009	1:14	1 of 1	See Table

TAS A4H Primary.drw.dwt

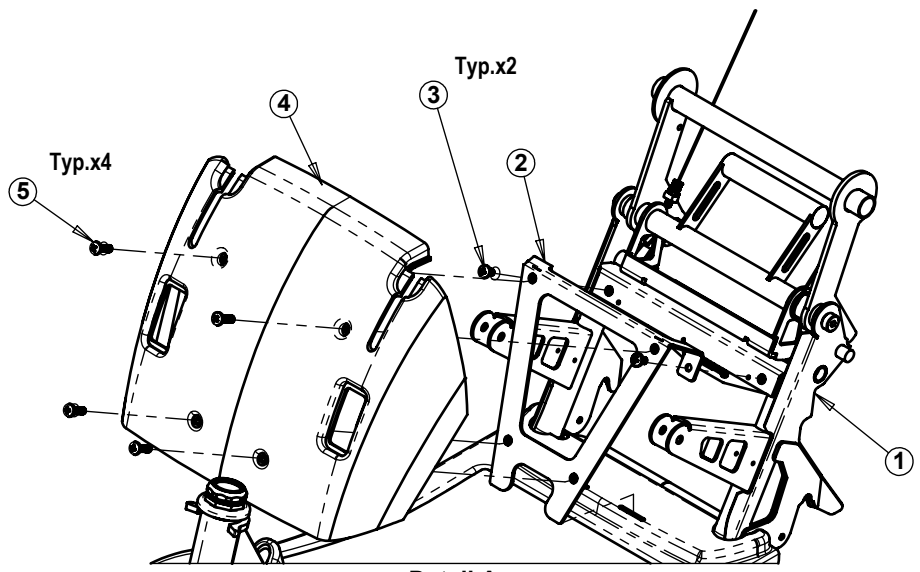
Item	Qty.	Cat No.	Description
1	1	20-75-014	Front Frame 3W Assembly
2	1	63-75-017	Cover Connector Bracket
3	6	74-06-009	Screw Philips Pan Head M6x10 Galv.
4	1	62-76-004	Mid Body Cover - Silver
5	8	74-06-001	Screw Philips Pan Head M6x20 Galv.
6	1	63-75-709	Front Seat Lever
7	2	74-05-002	Screw Shoulder M6x \varnothing 8x25
8	2	74-12-001	Washer M6 Galv.
9	2	74-10-005	Nut Nylok M6 Galv.
10	4	74-06-018	Screw Philips Pan Head M6x25 Black
11	2	63-75-037	Seat Bracket Spacer
12	1	20-75-016	Seat Titan Assembly
13	1	63-75-011	Seat Support Plate - Left
14	1	63-75-010	Seat Support Plate - Right
15	4	63-70-027	Seat Bracket
16	1	See Table	Tiller Assembly - Red/Blue/Grey
17	1	62-75-010	Floor Titan 3W - Silver
18	4	74-09-005	Screw Philips Pan Head Self Tap. #8x10
19	4	74-10-002	Nut Nylok M3 Galv.
20	4	74-06-011	Screw Philips Pan Head M3x10 Galv.
21	4	74-12-009	Washer M3 Galv.
22	1	62-70-056	Cable + Guide 550/385
23/1	1	62-75-009	Carpet Titan 3W
23/2	4	62-76-005	Velcro Strips (male) with adhesive backing
24	1	68-75-802	Warning Label
25	1	68-75-203	Sticker for Front Tiller



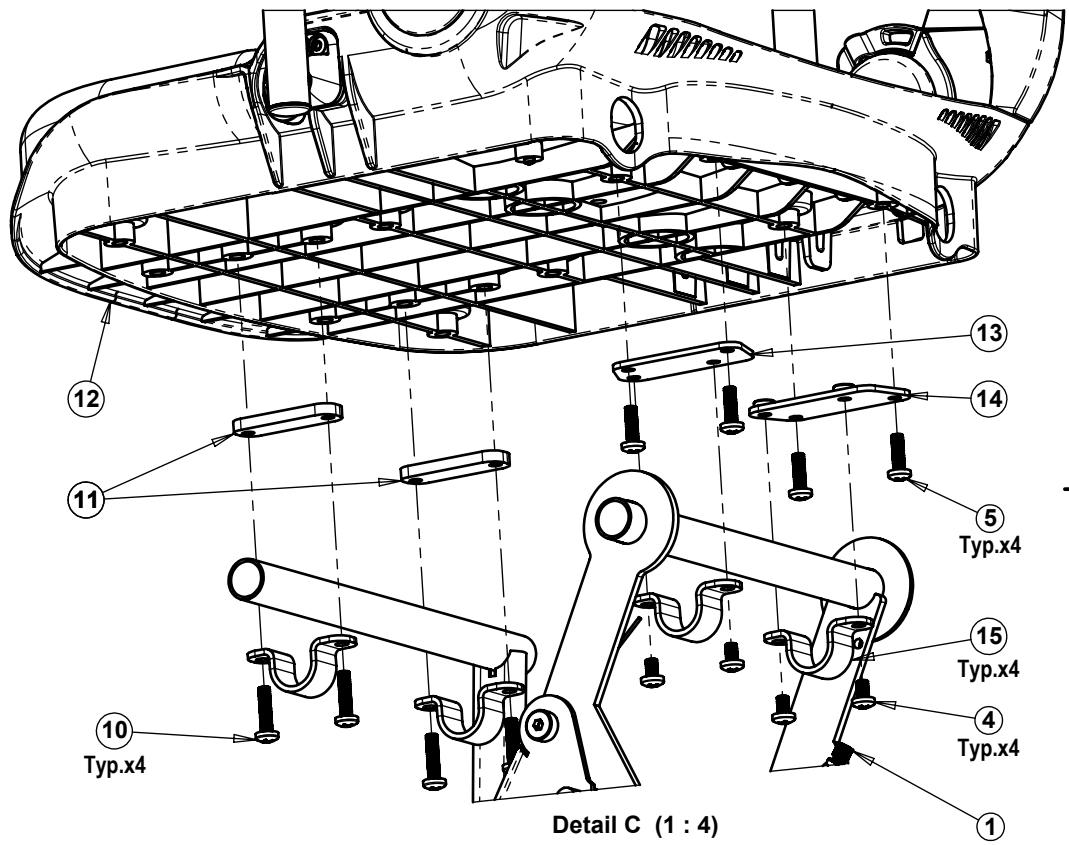
Name	Cat. No.	Tiller Assembly (Part No. 17)
Front Assembly 3W - Red	20-75-001	20-76-008
Front Assembly 3W - Blue	20-75-002	20-76-009
Front Assembly 3W - Grey	20-75-003	20-76-010

Do NOT scale from drawing.			Drawn		L.L.	Drawing No. 20-75-001a	 TZORA Active Systems Ltd. Tel: 972-3-5398999 Fax: 972-3-6320879 www.tzora.com		
Approved ONLY with stamp.			Checked						
			Production						
			Confirmed						
				Date	Name	Part Name: Front Assembly 3W - Red/Blue/Grey			
			General Tolerances:			Date created	Scale	Sheet	Cat. No.
Date	Confirmed	Update	\pm mm.	\pm mm.	\pm °	12 May 2009	1:8	1 of 3	See Table

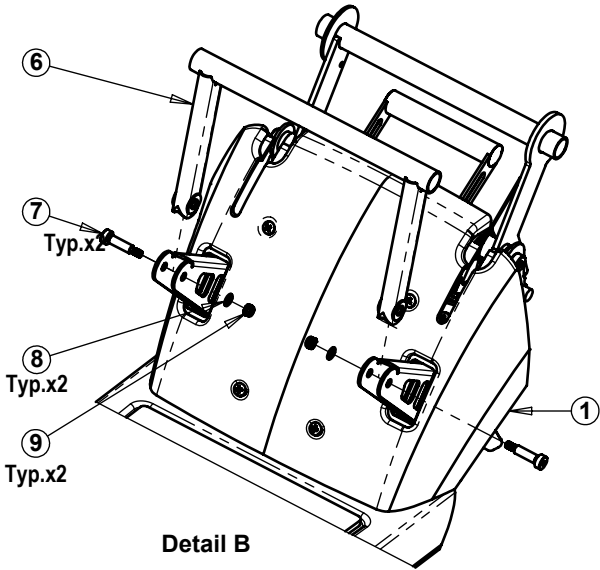
TAS A4H Primary.drwdot



Detail A



Detail C (1 : 4)



Detail B

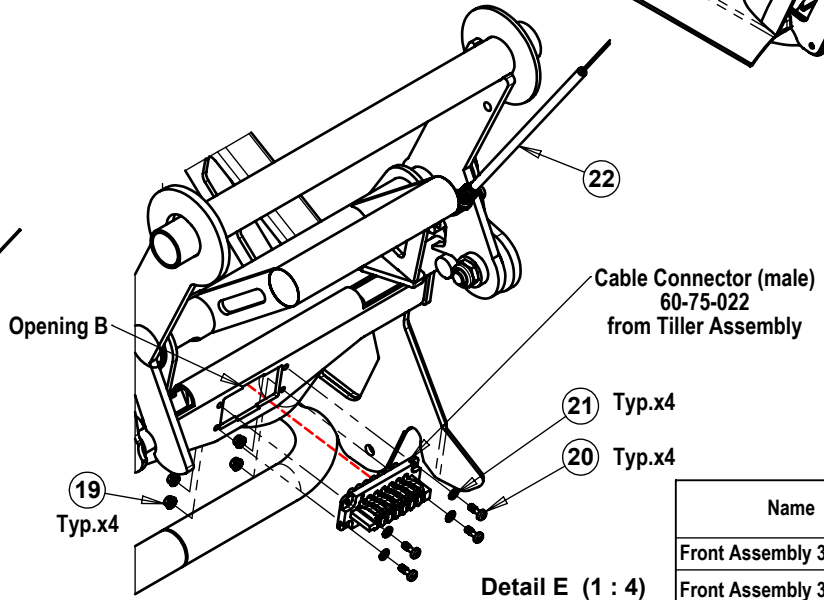
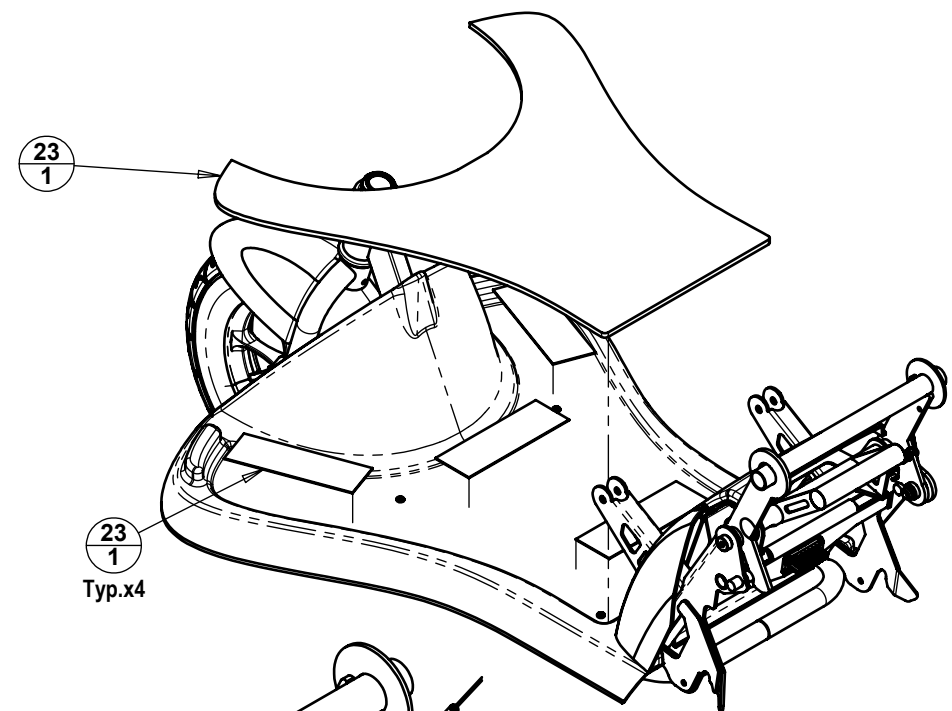
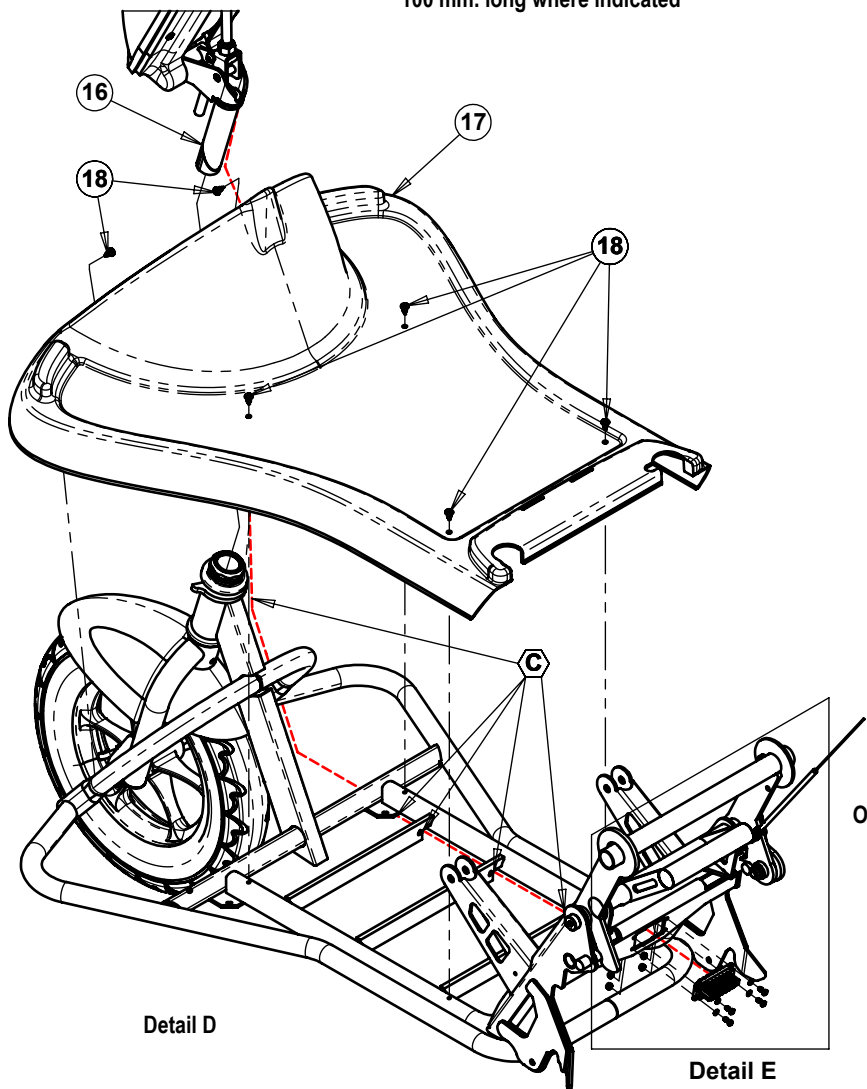
Name	Cat. No.	Tiller Assembly (Part No. 17)
Front Assembly 3W - Red	20-75-001	20-76-008
Front Assembly 3W - Blue	20-75-002	20-76-009
Front Assembly 3W - Grey	20-75-003	20-76-010

Sheet 2	Date 12 May 2009	Scale 1:7	General Tolerances:			Drawing No. 20-75-001a	Cat. No. See Table	Part Name: Front Assembly 3W - Red/Blue/Grey
			Holes Dia. ± mm.	Linear ± mm.	Angular ± °			


TZORA
 Active Systems Ltd.


Tel: 972-3-5398999
 Fax: 972-3-6320879
 www.tzora.com

REMARKS:
 1. Route of Connector Cable:
 Under Front Frame and through opening B.
 The cable is to be secured with 5 plastic ties
 100 mm. long where indicated

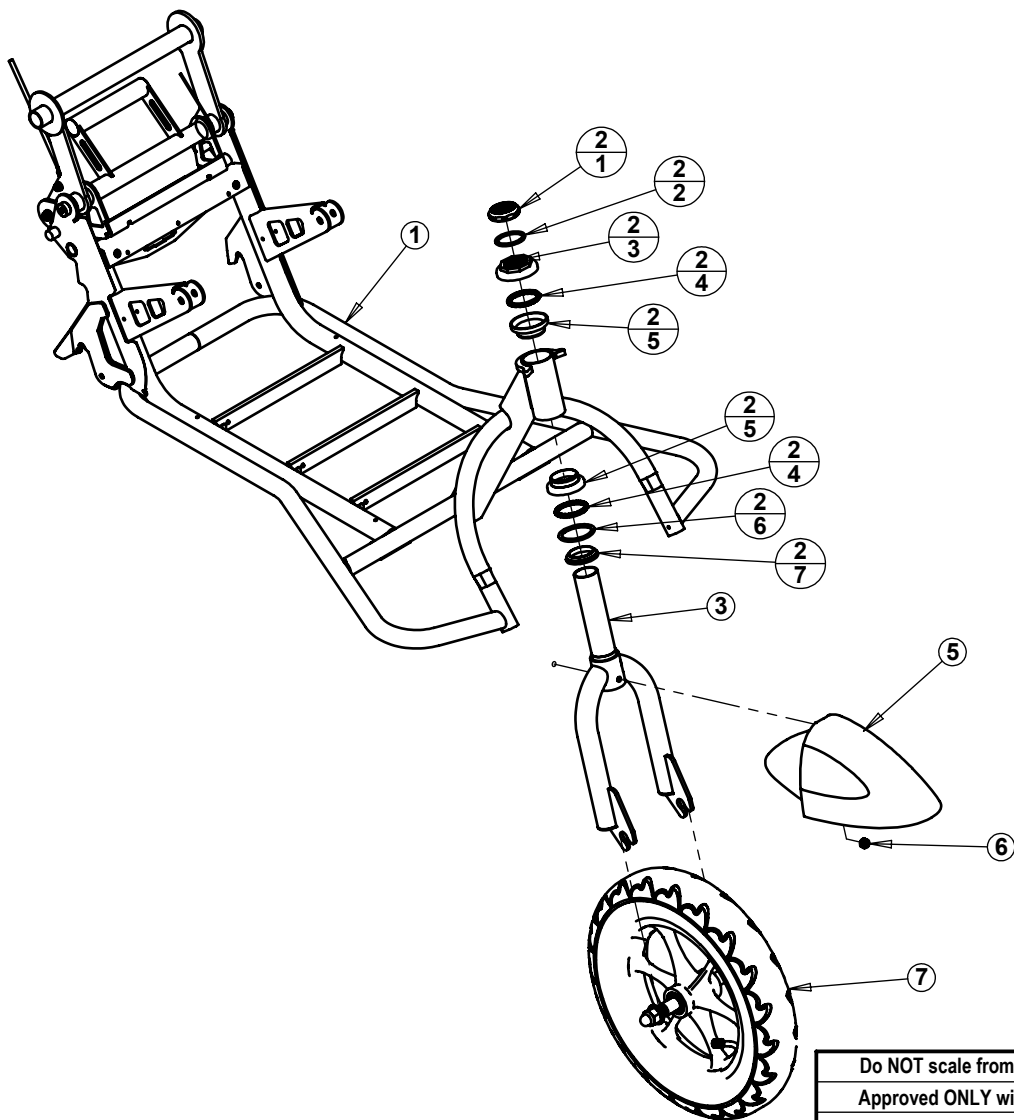


Name	Cat. No.	Tiller Assembly (Part No. 17)
Front Assembly 3W - Red	20-75-001	20-76-008
Front Assembly 3W - Blue	20-75-002	20-76-009
Front Assembly 3W - Grey	20-75-003	20-76-010


Sheet 3	Date 12 May 2009	Scale 1:8	General Tolerances:			Drawing No. 20-75-001a	Cat. No. See Table	Part Name: Front Assembly 3W - Red/Blue/Grey
			Holes Dia. ± mm.	Linear ± mm.	Angular ± °			

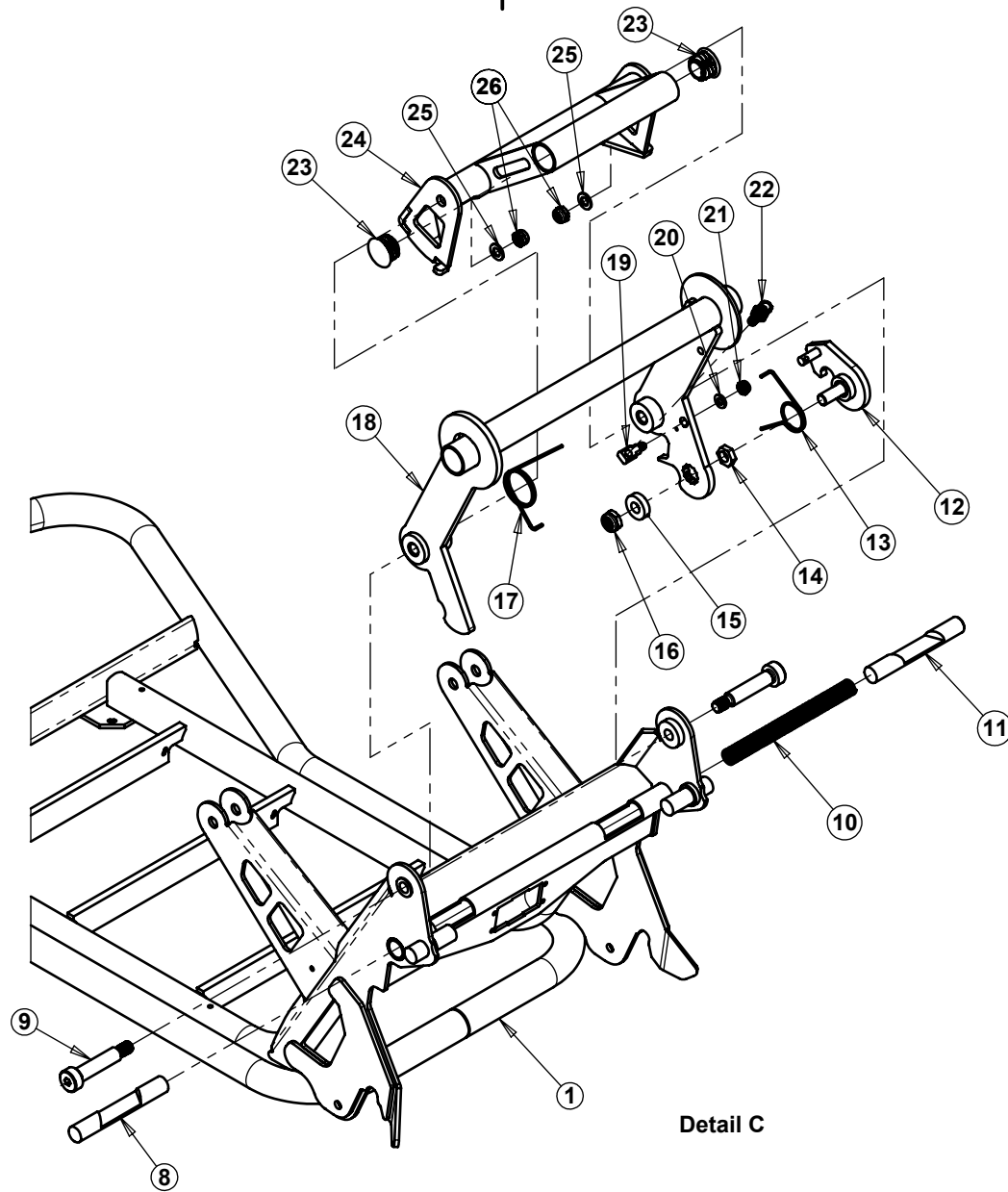

TZORA
 Active Systems Ltd.

Tel: 972-3-5398999
 Fax: 972-3-6320879
 www.tzora.com



Item	Qty.	Cat No.	Description
1	1	20-75-012	Titan 3W Front Frame
2/1	1	63-75-016	Bearing Set 8 - Part 1
2/2	1	62-75-012	Bearing Set 8 - Part 2
2/3	1	63-75-015	Bearing Set 8 - Part 3
2/4	2	66-75-001	Bearing Set 8 - Part 4
2/5	2	63-75-014	Bearing Set 8 - Part 5
2/6	1	62-75-011	Bearing Set 8 - Part 6
2/7	1	63-75-013	Bearing Set 8 - Part 7
3	1	63-75-701	Titan 3W Fork
4	1	74-01-010	Screw Hex Head M6x45 Galv.
5	1	62-76-021	Mudguard Front Wheel - Silver
6	1	74-10-005	Nut Nylock M6 Galv.
7	1	20-75-015	Front Wheel 3W Assembly
8	1	63-75-004	Release Axle - Left
9	2	74-05-003	Screw Shoulder \varnothing 10xM8x40
10	1	65-75-001	Spring 001
11	1	63-75-003	Release Axle - Right
12	1	20-75-012	Lock Plate Assembly
13	1	65-75-004	Spring 002
14	1	63-75-030	Eccentric Nut
15	1	63-75-032	Lock Plate Washer
16	1	74-10-003	Nut Nylok M8 Galv.
17	1	65-75-003	Spring 003
18	1	63-75-708	Rear Seat Lever
19	1	62-75-002	Cable Stop Holder
20	1	74-12-005	Washer M5
21	1	74-10-007	Nut Nylok M5 Galv.
22	1	63-00-005	Adjustable Cable Stop (including nut)
23	2	62-74-018	Cap for Pipe \varnothing 22
24	1	63-75-028	Release Handle
25	2	74-12-001	Washer M6x12x1.5 Galv.
26	2	74-10-001	Nut Nylok M6 Black

Do NOT scale from drawing.			Drawn		L.L.	Drawing No. 20-75-014a	 TZORA Active Systems Ltd. <small>Tel: 972-3-5398999 Fax: 972-3-6320879 www.tzora.com</small>		
Approved ONLY with stamp.			Checked						
			Production						
			Confirmed						
				Date	Name	Part Name: Front Frame 3W Assembly			
General Tolerances:						Date created	Scale	Sheet	Cat. No.
Date	Confirmed	Update	\pm mm.	\pm mm.	\pm °	12 May 2009	1:9	1 of 2	20-75-014



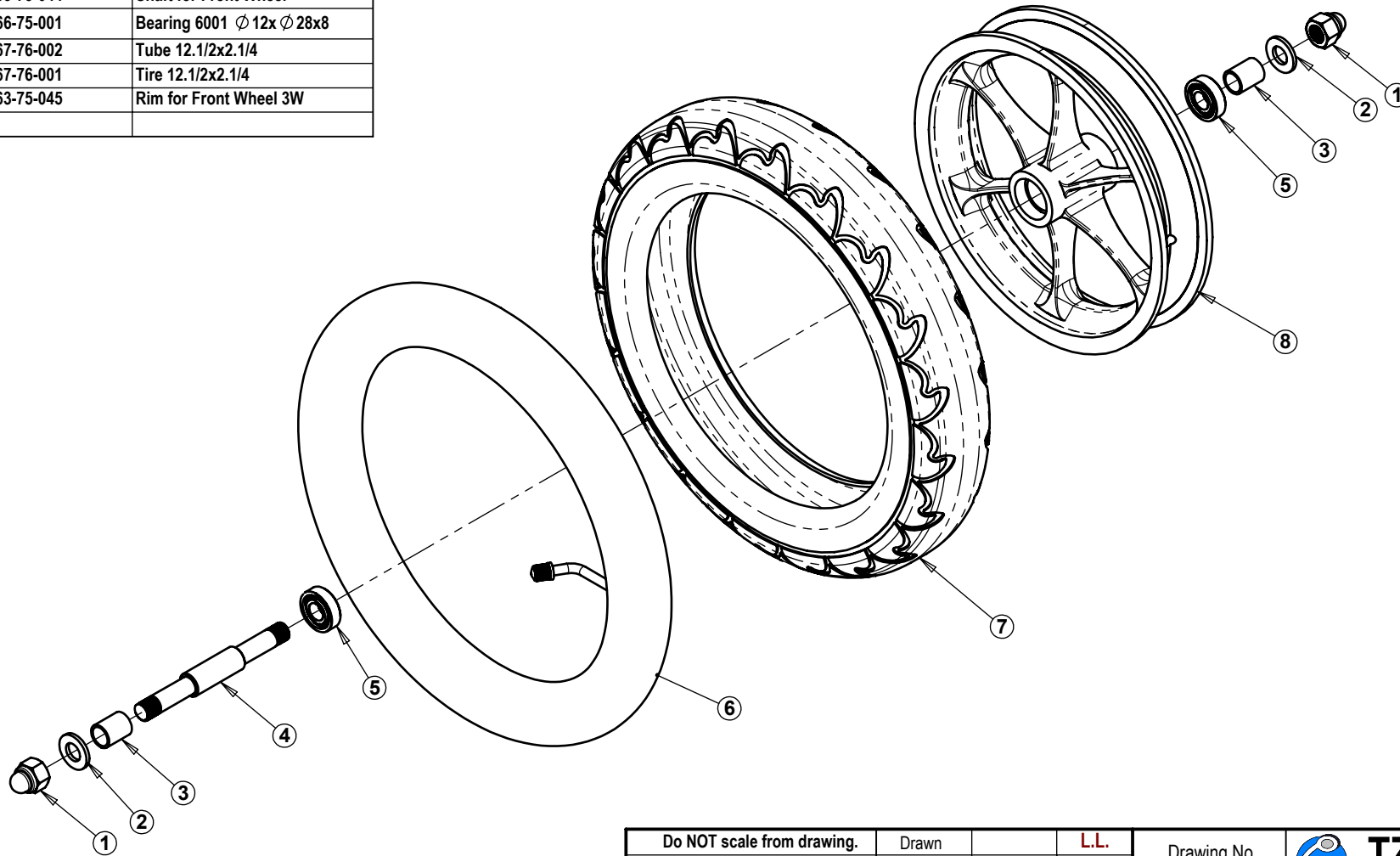
Detail C


Sheet 2	Date 12 May 2009	Scale 1:5	General Tolerances:			Drawing No. 20-75-014a	Cat. No. 20-75-014	Part Name: Front Frame 3W Assembly
			Holes Dia. ± mm.	Linear ± mm.	Angular ± °			

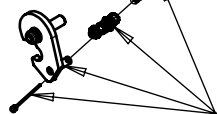
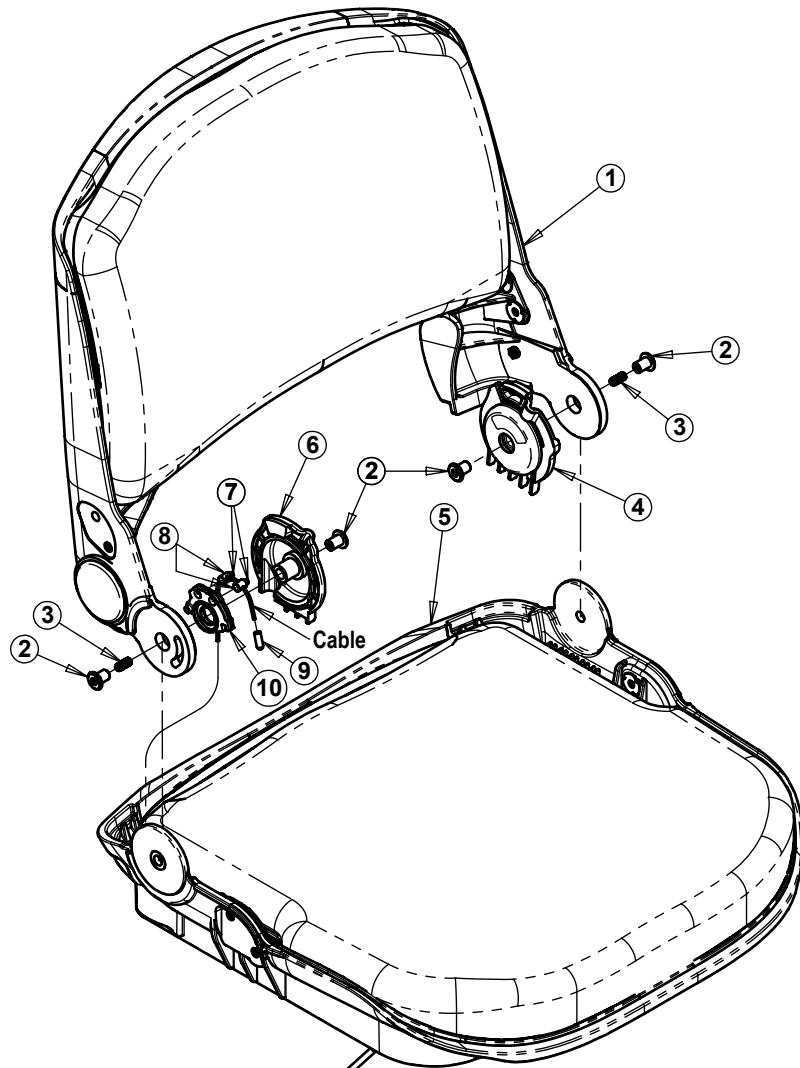


Tel: 972-3-5398999
 Fax: 972-3-6320879
 www.tzora.com

Item	Qty.	Cat No.	Description
1	2	74-17-001	Nut Nylok Dome M12 Galv.
2	2	74-12-011	Washer M12x24x2.5 Galv.
3	2	63-75-026	Spacer for Front Wheel
4	1	63-75-044	Shaft for Front Wheel
5	2	66-75-001	Bearing 6001 ϕ 12x ϕ 28x8
6	1	67-76-002	Tube 12.1/2x2.1/4
7	1	67-76-001	Tire 12.1/2x2.1/4
8	1	63-75-045	Rim for Front Wheel 3W




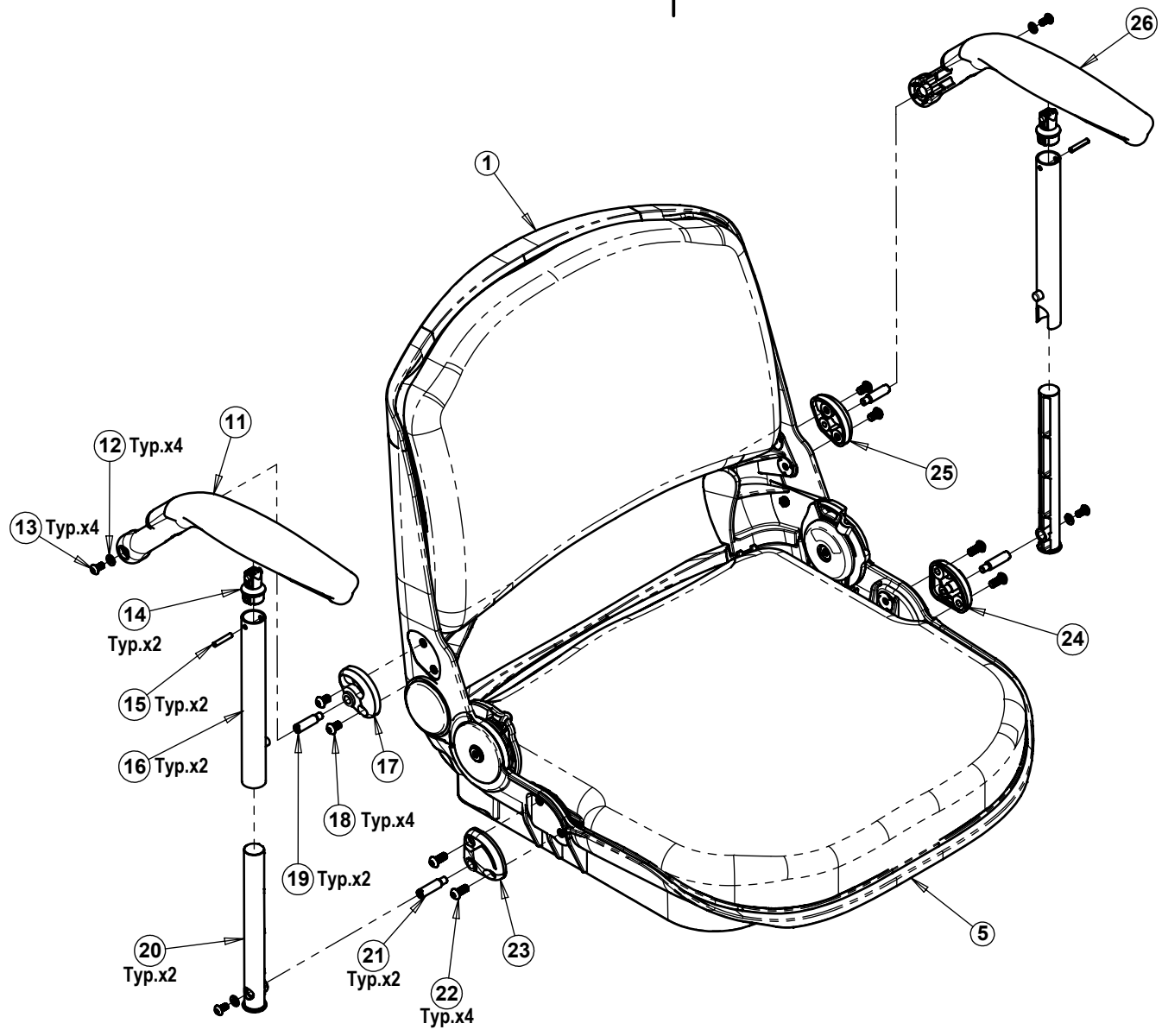
Do NOT scale from drawing.			Drawn		L.L.	Drawing No.		 TZORA Active Systems Ltd.		Tel: 972-3-5398999
Approved ONLY with stamp.			Checked			20-75-015a				Fax: 972-3-6320879
			Production							www.tzora.com
			Confirmed							
				Date	Name	Part Name:				
			General Tolerances:			Front Wheel 3W Assembly				
			Holes Dia.	Linear	Angular	Date created	Scale	Sheet	Cat. No.	
Date	Confirmed	Update	\pm mm.	\pm mm.	\pm °	11 May 2009	1:4	1 of 1	20-75-015	



REMARKS:
Lock Plate Cable & Connector
from Front Frame 3W Assembly
attached to Front Frame before
attachment to Seat Assembly.

Item	Qty.	Cat No.	Description
1	1	20-75-017	Backrest + Black Cushion Assembly
2	4	74-11-004	Nut Flat Cap M6 Black Galv.
3	2	74-08-001	Set Screw Allen M6x14 Black Galv.
4	1	62-70-052	Seat Axis Cover - Left
5	1	20-75-018	Seatrest + Black Cushion Assembly
6	1	62-70-053	Seat Axis Cover - Right
7	2	63-70-028	Cable Bolt
8	2	74-08-00X	Set Screw Allen M4x6
9	1	60-75-005	Close End Wire Terminal (CE-1)
10	1	62-70-051	Seat Cable Puller
11	1	20-76-015	Armrest Right Assembly
12	4	74-12-003	Washer Ø 5 Black
13	4	74-03-004	Screw Allen Button Head M5x10 Black
14	2	62-70-902	Armrest Axis Bushing
15	2	74-14-001	Roll Pin Ø 4x22 Stainless
16	2	63-70-092	Vertical External Tube
17	1	38-70-922	Armrest Back Connector - Right
18	4	74-03-002	Screw Allen Button Head M6x10 Black
19	2	63-70-925	Pivot Pin - Back
20	2	62-070-901	Vertical Inner Armrest
21	2	63-70-926	Pivot Pin - Bottom
22	4	74-03-009	Screw Allen Button Head M6x14 Black
23	1	38-70-920	Armrest Connector - Right
24	1	38-70-921	Armrest Connector - Left
25	1	38-70-923	Armrest Back Connector - Left
26	1	20-76-016	Armrest Left Assembly

Do NOT scale from drawing.		Drawn		L.L.	Drawing No. 20-75-016a	 TZORA Active Systems Ltd. Tel: 972-3-5398999 Fax: 972-3-6320879 www.tzora.com			
Approved ONLY with stamp.		Checked							
		Production							
		Confirmed							
			Date	Name	Part Name: Seat Titan Assembly				
		General Tolerances:			Date created	Scale	Sheet	Cat. No.	
Date	Confirmed	Update	± mm.	± mm.	± °	18 Jun 2009	1:6	1 of 2	20-075-016

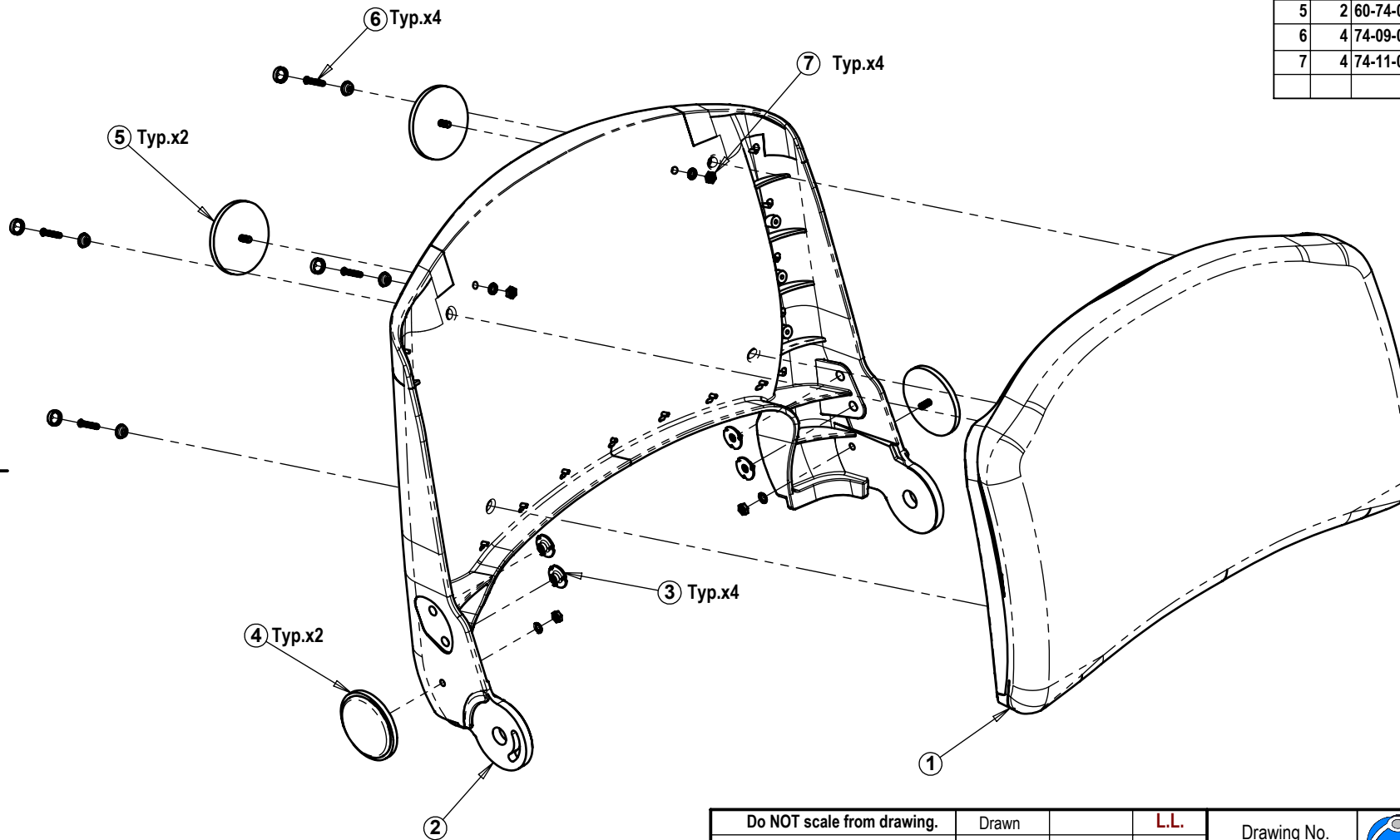



Sheet 2	Date 18 Jun 2009	Scale 1:6	General Tolerances:			Drawing No. 20-75-016a	Cat. No. 20-75-016	Part Name: Seat Titan Assembly
			Holes Dia. ± mm.	Linear ± mm.	Angular ± °			


TZORA
 Active Systems Ltd.

Tel: 972-3-5398999
 Fax: 972-3-6320879
 www.tzora.com

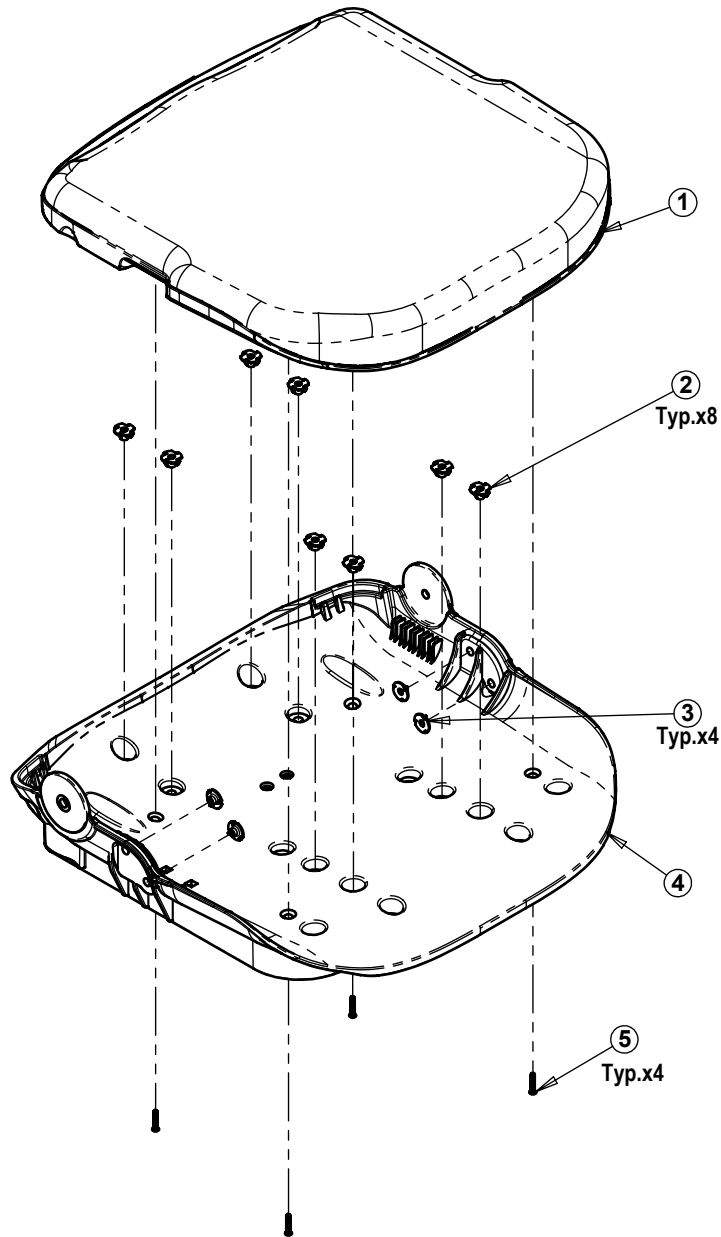
Item	Qty.	Cat No.	Description
1	1	62-70-050	Inner Support + Black Cushion
2	1	23-75-001	Backrest Shell + Drilling
3	4	74-52-006	Low Tee Nut with Prongs M6
4	2	60-74-039	Reflector - Orange TF310-21
5	2	60-74-032	Reflector - Red TF310-1
6	4	74-09-003	Philips Pan Head Tapping ST4.2x20
7	4	74-11-003	Nut M5 Galv.




Do NOT scale from drawing.			Drawn		L.L.	Drawing No.				Tel: 972-3-5398999
Approved ONLY with stamp.			Checked			20-75-017a				Fax: 972-3-6320879
			Production							www.tzora.com
			Confirmed							
				Date	Name	Part Name:				
			General Tolerances:			Backrest + Black Cushion Assembly				
			Holes Dia.	Linear	Angular	Date created	Scale	Sheet	Cat. No.	
Date	Confirmed	Update	± mm.	± mm.	± °	18 Jun 2009	1:5	1 of 1	20-75-017	

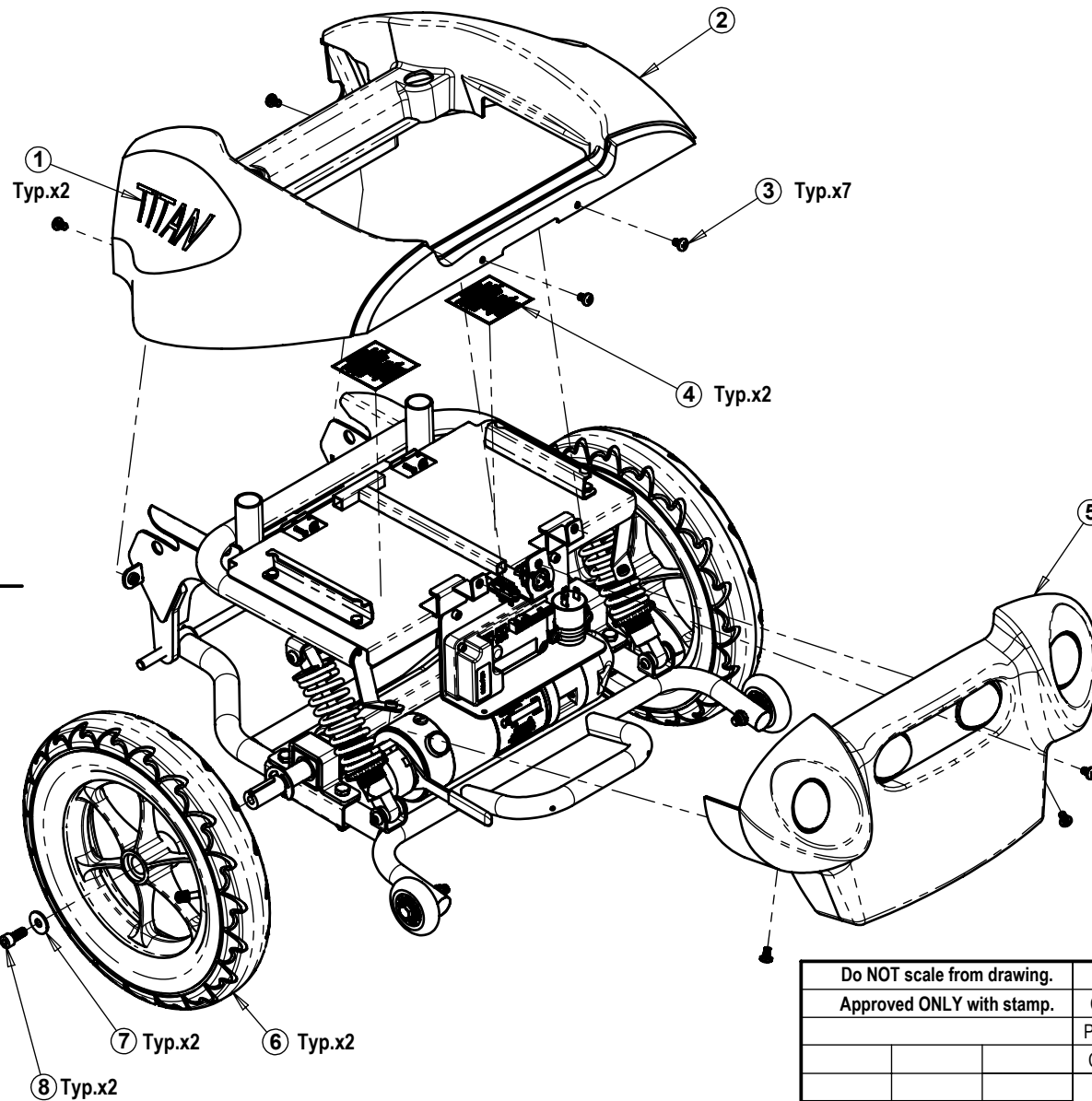
TAS A4H Primary.drwdot

Item	Qty.	Cat No.	Description
1	1	62-70-049	Seat Inner + Black Cushion
2	8	74-11-005	Tee Nut with Prongs M6
3	4	74-11-006	Low Tee Nut with Prongs M6
4	1	62-70-048	Seat Shell
5	4	74-09-003	Screw Philips Pan Head ST 4.2x20




Do NOT scale from drawing.			Drawn		L.L.	Drawing No.		 TZORA Active Systems Ltd.		Tel: 972-3-5398999
Approved ONLY with stamp.			Checked			20-75-018a				Fax: 972-3-6320879
			Production							www.tzora.com
			Confirmed							
				Date	Name	Part Name:				
			General Tolerances:			Seatrest + Black Cushion Assembly				
			Holes Dia.	Linear	Angular	Date created	Scale	Sheet	Cat. No.	
Date	Confirmed	Update	± mm.	± mm.	± °	18 Jun 2009	1:7	1 of 1	20-75-018	

TAS A4H Primary.drwdot



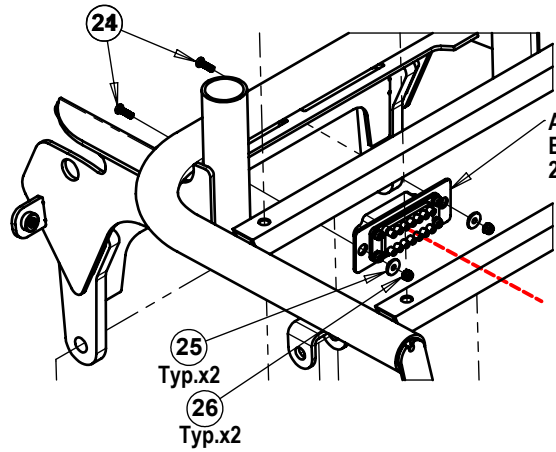
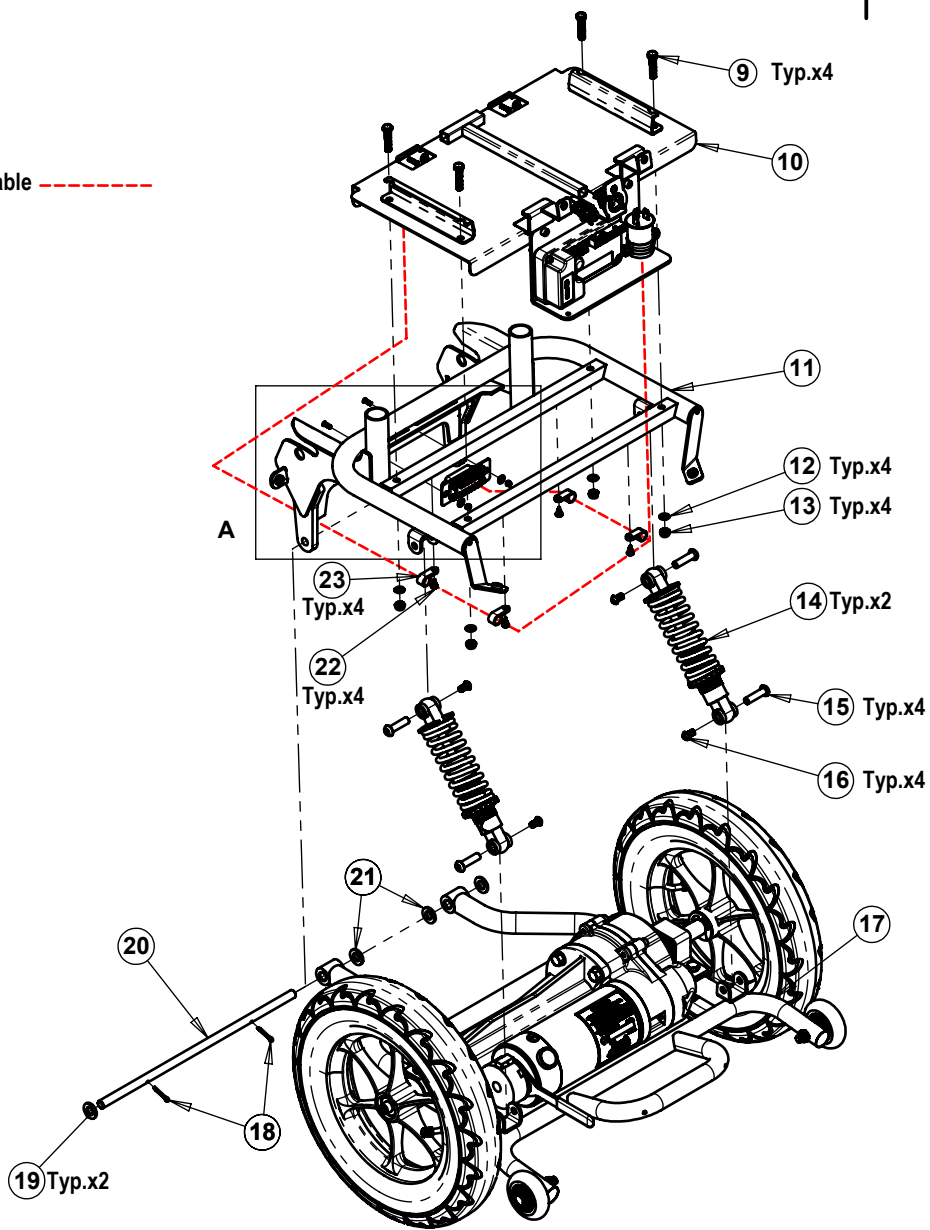
Item	Qty.	Cat No.	Description
1	2	68-75-204	Sticker - Titan Side Label
2	1	See Table	Rear Body Cover - Red/Blue/Grey
3	7	74-06-009	Screw Allen Button Head M6x10 Black Galv.
4	2	68-75-501	Battery Warning Label
5	1	20-75-013	Back Cover Assembly - Silver
6	2	20-76-024	Rear Wheel Assembly
7	2	74-02-013	Screw Allen M8x20
8	2	74-12-008	Washer M8x24x2
9	4	74-01-011	Screw Hex Head M6x30 Galv.
10	1	20-76-012	Battery Cradle Assembly
11	1	63-75-705	Rear Frame
12	4	74-12-001	Washer \varnothing 16x6.4x1 Galv.
13	4	74-10-005	Nut Nylok M6 Galv.
14	2	38-75-010	Shock Absorber
15	4	63-74-024	Screw Axle \varnothing 8xM6x30
16	4	63-74-046	Screw for Axle Screw M6
17	1	20-76-011	Rear Support Assembly
18	2	74-14-004	Split Pin \varnothing 3.2x16
19	2	62-74-004	Washer PVC \varnothing 20x \varnothing 10x2
20	1	63-73-033	Axle 01
21	4	74-09-005	Screw Philips Pan Head ST #8x10
22	2	74-12-014	Washer \varnothing 20x \varnothing 10x2.5
23	4	60-74-029	Plastic Cable Clamp
24	2	74-06-011	Screw Philips Pan Head M3x10 Galv.
25	2	63-75-019	Bush for Connector Plate
26	2	74-10-002	Nut Nylok M3 Galv.

Name	Cat. No.	Rear Body Cover (Part No. 2)
Rear Assembly - Red	20-76-002	62-76-006
Rear Assembly - Blue	20-76-004	62-76-007
Rear Assembly - Grey	20-76-006	62-76-008

Do NOT scale from drawing.		Drawn		L.L.	Drawing No. 20-76-002a	 TZORA Active Systems Ltd. Tel: 972-3-5398999 Fax: 972-3-6320879 www.tzora.com			
Approved ONLY with stamp.		Checked							
		Production							
		Confirmed			Date	Name			
		General Tolerances:							
		Holes Dia.	Linear	Angular	Date created	Scale	Sheet	Cat. No.	
Date	Confirmed	Update	\pm mm.	\pm mm.	\pm °	30 Apr 2009	1:7	1 of 2	See Table

REMARKS:

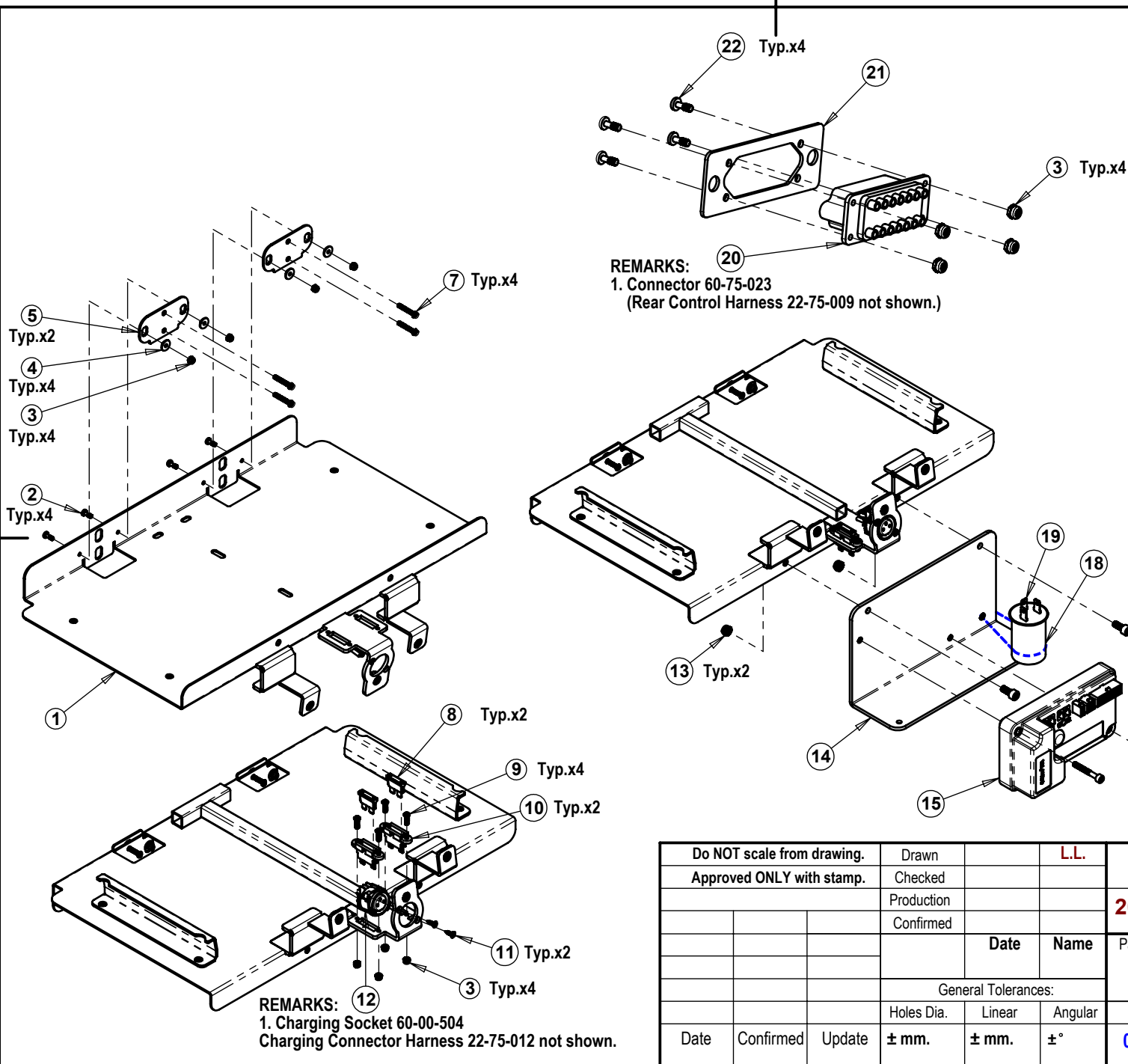
1. Route of Cable -----



Sheet 2	Date 30 Apr 2009	Scale 1:9	General Tolerances:			Drawing No. 20-76-002a	Cat. No. See Table	Part Name: Rear Assembly - Red/Blue/Grey
			Holes Dia. ± mm.	Linear ± mm.	Angular ± °			
of 2								


TZORA
Active Systems Ltd.

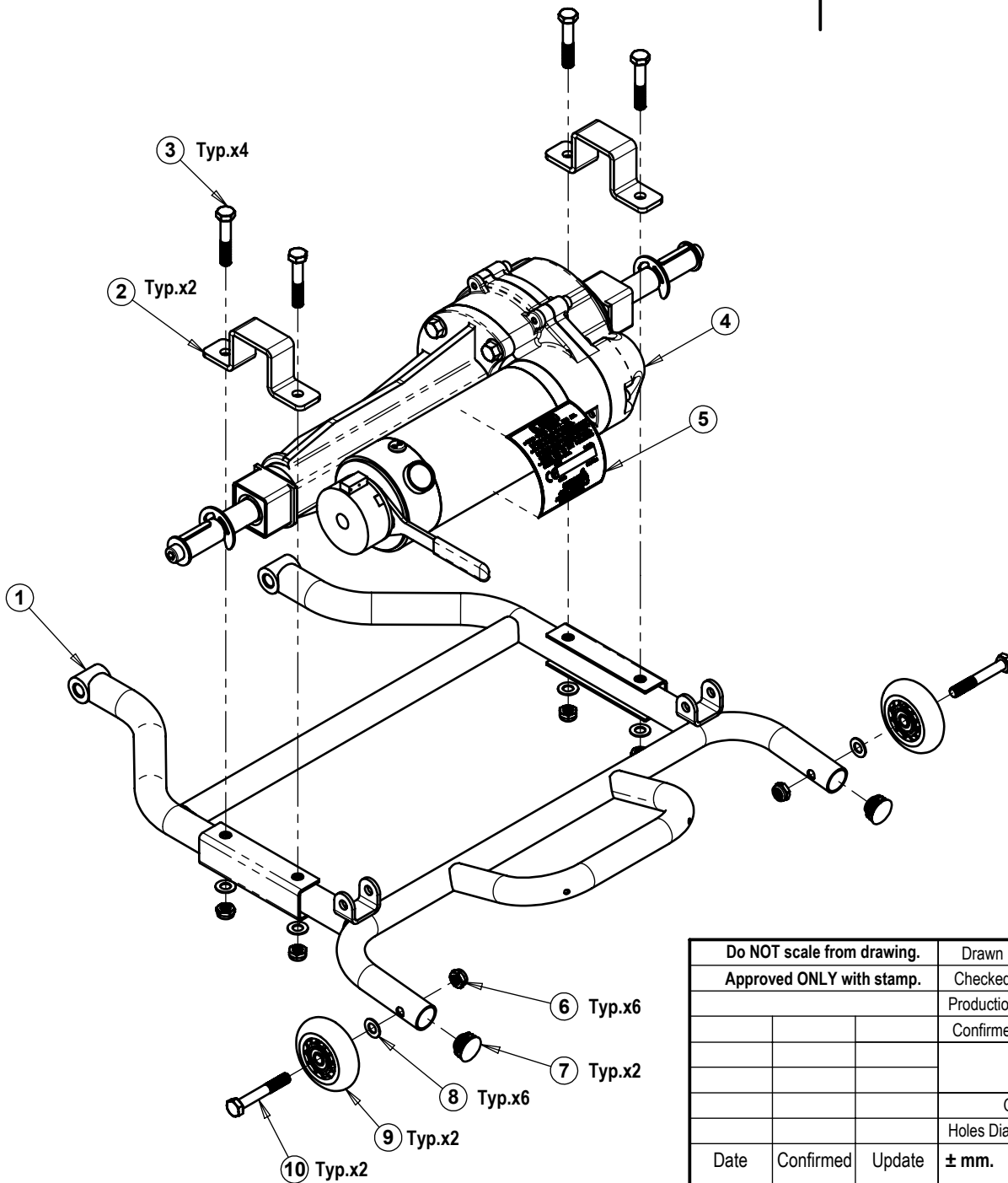
Tel: 972-3-5398999
Fax: 972-3-6320879
www.tzora.com




Item	Qty.	Cat No.	Description
1	1	63-75-711	Battery Cradle
2	8	74-06-014	Screw Philips Pan Head M3x12 Galv.
3	12	74-10-002	Nut Nylok M3 Galv.
4	4	63-75-019	Bush for Connector Plate
5	2	63-75-018	Plate for SB 50 Connector
6	1	22-75-008	Battery Connector Harness
7	4	74-03-008	Screw Allen Button Head M3x20 Galv.
8	2	60-74-052	Fuse 5A
9	4	74-06-011	Screw Philips Pan Head M3x10 Galv.
10	2	60-00-520	Fuse Housing
11	2	74-09-006	Screw Philips Csk. Head #6 3.2x10
12	1	22-75-012	Charging Connector Harness
13	2	74-10-007	Nut Nylok M5 Galv.
14	1	63-75-020	Heat Sink for Controller
15	1	60-74-028	Controller S-Drive 70A
16	2	74-02-012	Screw Allen M4x30 Galv.
17	2	74-02-011	Screw Allen M5x12 Galv.
18	1	69-00-030	Plastic Cable Tie
19	1	60-75-007	Relay
20	1	22-75-009	Rear Control Harness
21	1	63-75-006	Electronic Connector Plate
22	4	60-75-023	Screw Philips Pan Head M3x10 Galv.

Do NOT scale from drawing.		Drawn		L.L.
Approved ONLY with stamp.		Checked		
		Production		
		Confirmed		
		Date	Name	
General Tolerances:				
		Holes Dia.	Linear	Angular
Date	Confirmed	Update	± mm.	± mm. ± °

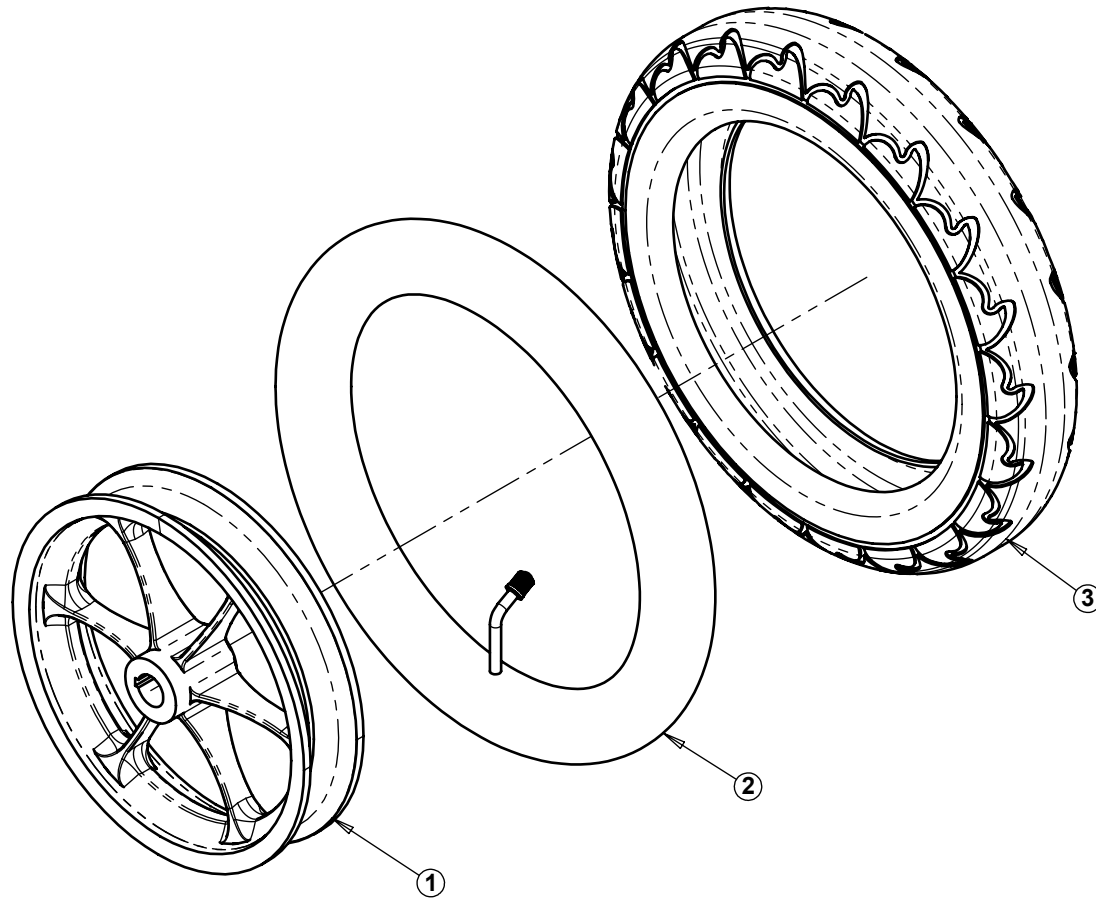
Drawing No.			Tel: 972-3-5398999 Fax: 972-3-6320879 www.tzora.com	
20-76-012a			Part Name:	
		Battery Cradle Assembly		
Date created	Scale	Sheet	Cat. No.	
04 May 2009	1:5	1 of 1	20-76-012	




Item	Qty.	Cat No.	Description
1	1	63-75-710	Rear Suspension
2	2	63-75-046	Motor Holder
3	4	74-01-009	Screw Hex Head M8x45 Galv.
4	1	61-75-001	Drive Unit HLM 180-C01
5	1	68-75-801	Motor Label
6	6	74-10-004	Nut Nylok M8 Galv.
7	2	62-74-018	Plastic Cap for Pipe $\varnothing 22$
8	6	74-12-007	Washer $\varnothing 8 \times 22 \times 1.5$
9	2	67-74-003	Wheel Plastic $\varnothing 62$
10	2	74-01-002	Screw Hex Head M8x55 Galv.

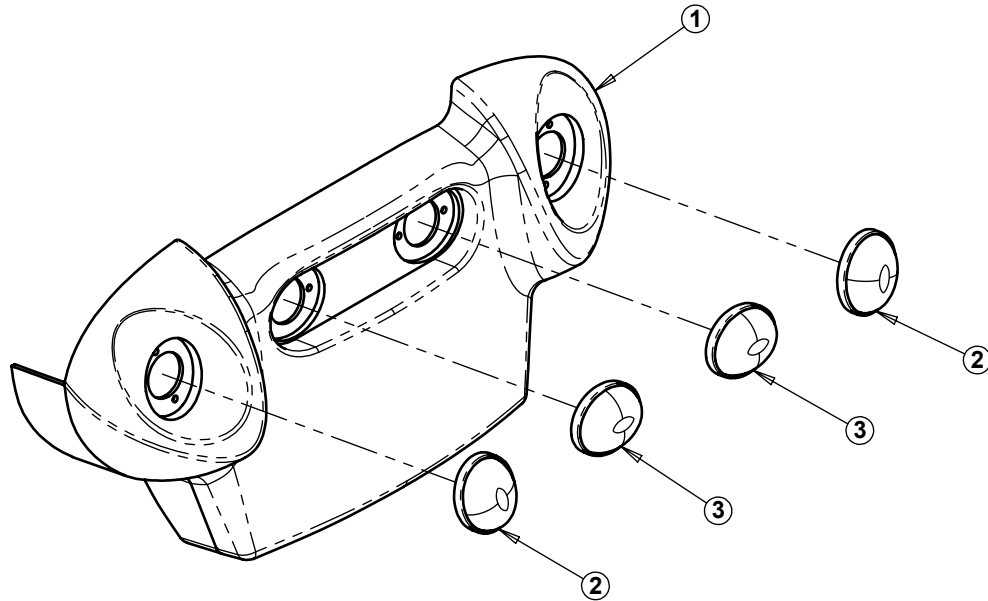
Do NOT scale from drawing.			Drawn		L.L.	Drawing No.				Tel: 972-3-5398999
Approved ONLY with stamp.			Checked			20-76-011a				Fax: 972-3-6320879
			Production							www.tzora.com
			Confirmed							
				Date	Name	Part Name:		Rear Support Assembly		
			General Tolerances:			Date created		Scale	Sheet	Cat. No.
Date	Confirmed	Update	\pm mm.	\pm mm.	\pm °	27 Apr 2009		1:5	1 of 1	20-76-011

Item	Qty.	Cat No.	Description
1	1	63-76-011	Rim for Rear Wheel
2	1	67-76-002	Tube 12.1/2" x 2.1/4"
3	1	67-76-001	Tire 12.1/2" x 2.1/4"




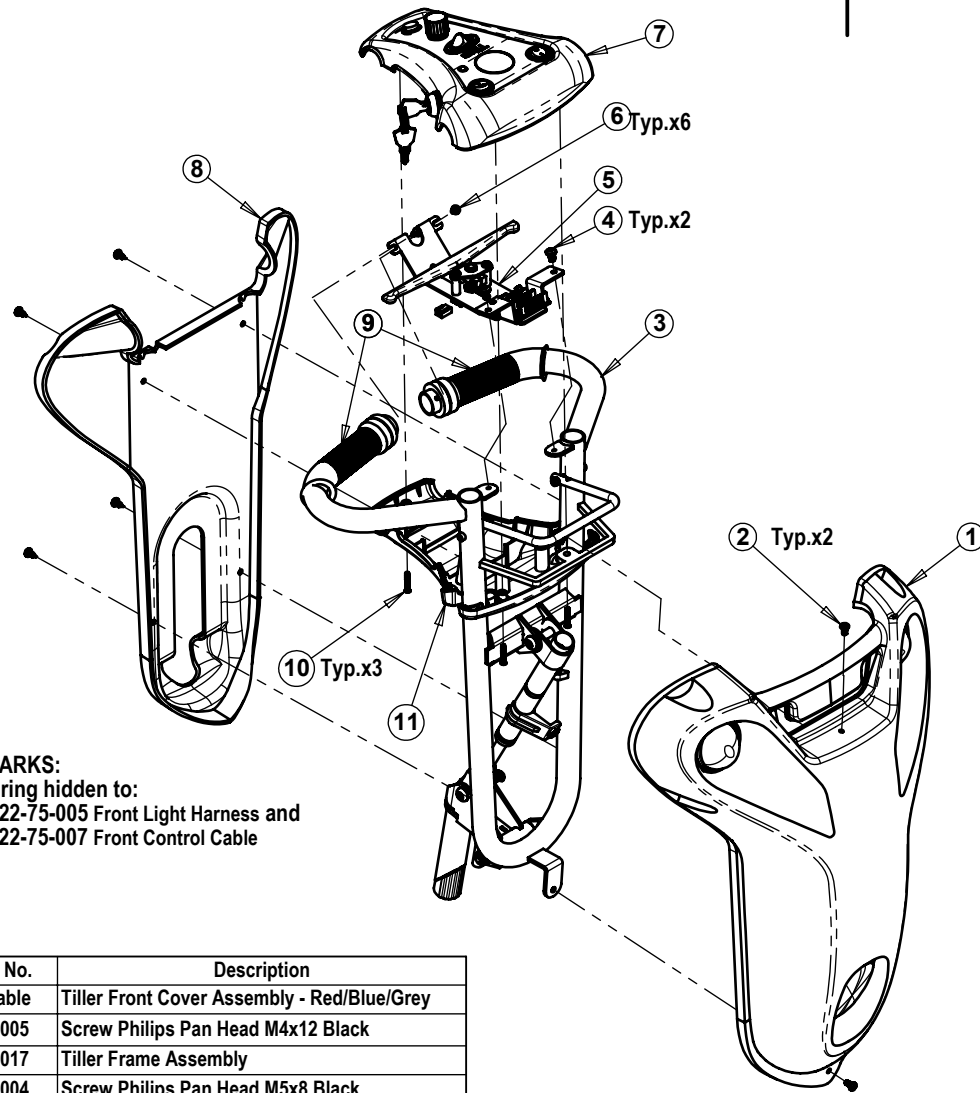
Do NOT scale from drawing.			Drawn		L.L.	Drawing No.		 TZORA Active Systems Ltd.		Tel: 972-3-6398999
Approved ONLY with stamp.			Checked			20-76-024a				Fax: 972-3-6320879
			Production							www.tzora.com
			Confirmed							
				Date	Name	Part Name:				
			General Tolerances:			Rear Wheel Assembly				
			Holes Dia.	Linear	Angular	Date created	Scale	Sheet	Cat. No.	
Date	Confirmed	Update	± mm.	± mm.	± °	06 May 2009	1:4	1 of 1	20-76-024	

Item	Qty.	Cat No.	Description
1	1	62-76-014	Back Cover - Silver
2	2	22-75-004	Turning Light Assembly - Orange
3	2	22-75-010	Rear Light Assembly

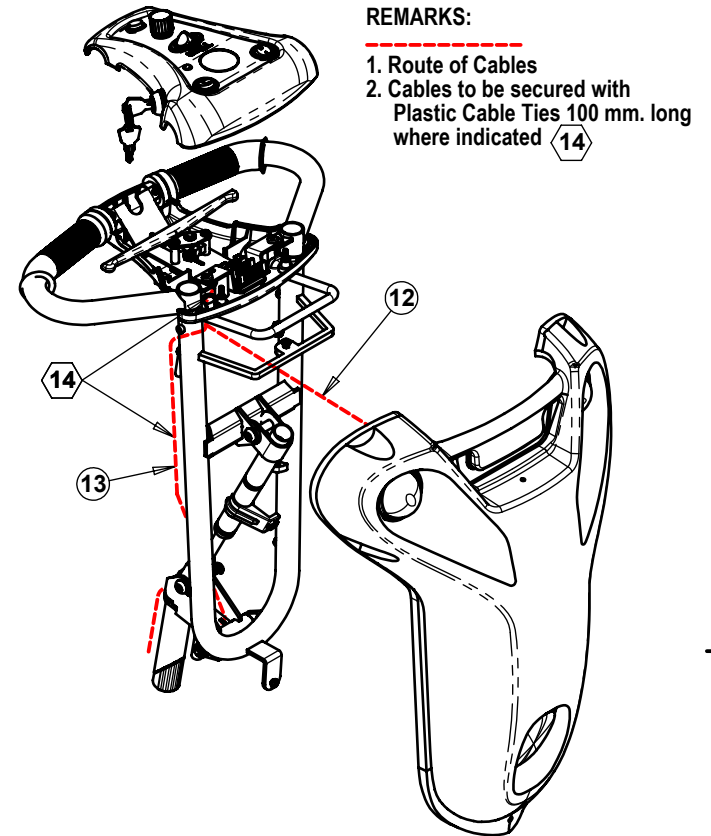


REMARKS:
1. Wiring not shown.

Do NOT scale from drawing.			Drawn		L.L.	Drawing No.		 TZORA Active Systems Ltd. <small>Tel: 972-3-6398999 Fax: 972-3-6320879 www.tzora.com</small>	
Approved ONLY with stamp.			Checked			20-75-013a			
			Production					Part Name:	
			Confirmed					Back Cover Assembly - Silver	
			General Tolerances:						
			Holes Dia.	Linear	Angular	Date created	Scale	Sheet	Cat. No.
Date	Confirmed	Update	± mm.	± mm.	± °	04 May 2009	1:5	1 of 1	20-75-013




REMARKS:
 1. Wiring hidden to:
 22-75-005 Front Light Harness and
 22-75-007 Front Control Cable

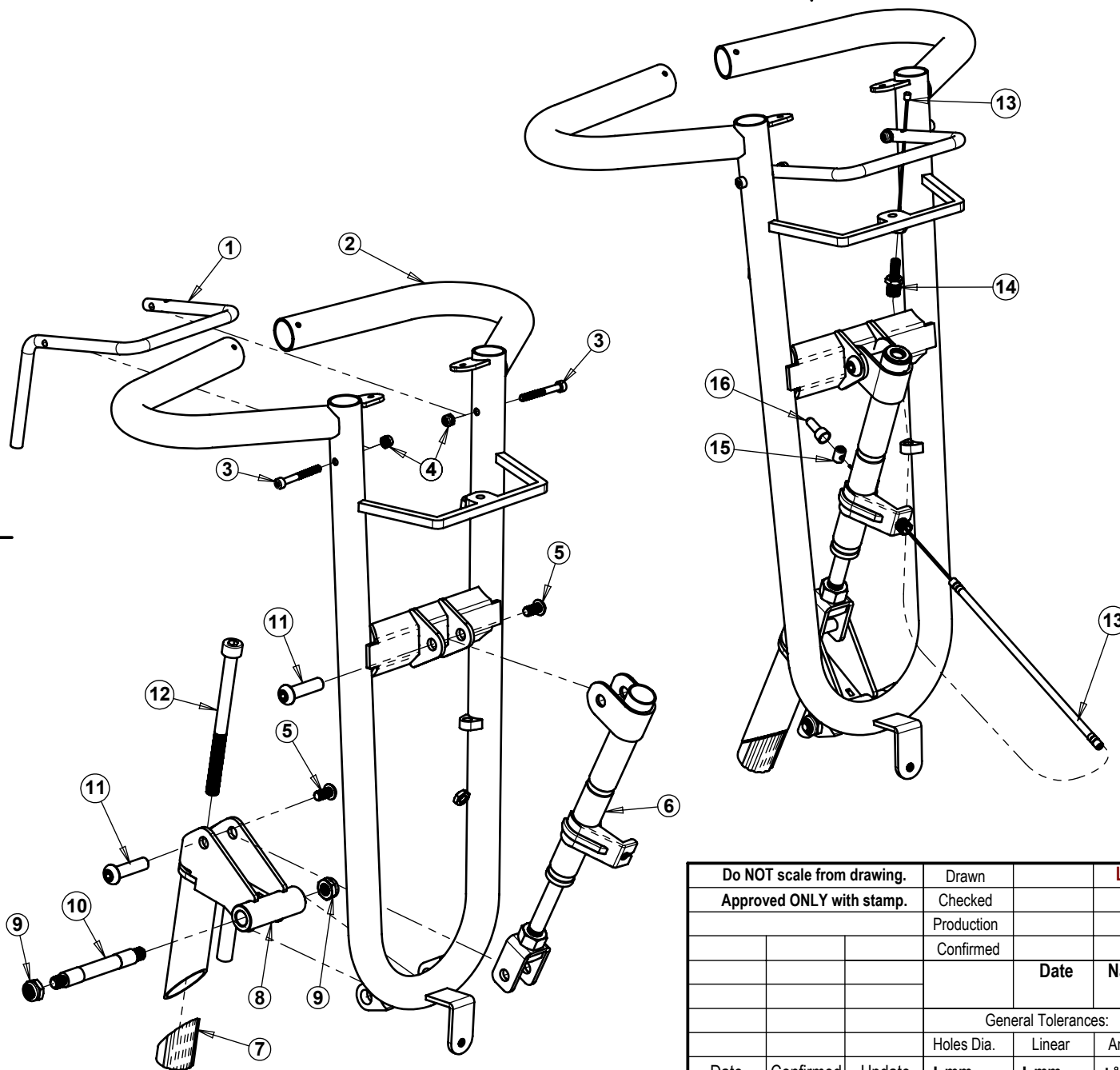


REMARKS:
 1. Route of Cables
 2. Cables to be secured with
 Plastic Cable Ties 100 mm. long
 where indicated 14

Item	Qty.	Cat No.	Description
1	1	See Table	Tiller Front Cover Assembly - Red/Blue/Grey
2	2	74-06-005	Screw Philips Pan Head M4x12 Black
3	1	20-76-017	Tiller Frame Assembly
4	2	74-06-004	Screw Philips Pan Head M5x8 Black
5	1	22-75-002	Wig-wag Assembly
6	6	74-09-005	Screw Philips Pan Head ST 4.2x10
7	1	See Table	Control Panel Top Assembly - Red/Blue/Grey
8	1	62-76-012	Tiller Back Cover - Silver
9	2	62-70-035	Hand Grip
10	3	74-09-003	Screw Philips Pan Head ST 4.2x20
11	1	See Table	Panel Bottom - Machined - Red/Blue/Grey
12	1	22-75-005	Front Light Harness
13	1	22-75-007	Front Control Cable
14	2	69-00-030	Plastic Cable Tie


Name	Cat. No.	Tiller Front Cover Assembly (Part No. 1)	Control Panel Top Assembly (Part No. 7)	Panel Bottom machined (Part No. 11)
Tiller Assembly - Red	20-76-008	20-76-018	20-76-021	62-76-009
Tiller Assembly - Blue	20-76-009	20-76-019	20-76-022	62-76-010
Tiller Assembly - Grey	20-76-010	20-76-020	20-76-023	62-76-011

Do NOT scale from drawing.			Drawn		L.L.	Drawing No. 20-76-008a	 TZORA Active Systems Ltd.	Tel: 972-3-5398999 Fax: 972-3-6320879 www.tzora.com		
Approved ONLY with stamp.			Checked							
			Production							
			Confirmed							
			Date	Name	Part Name: Tiller Assembly - Red/Blue/Grey					
			General Tolerances:			Date created	Scale	Sheet	Cat. No.	
Date	Confirmed	Update	± mm.	± mm.	± °	20 Apr 2009	1:7	1 of 1	See Table	

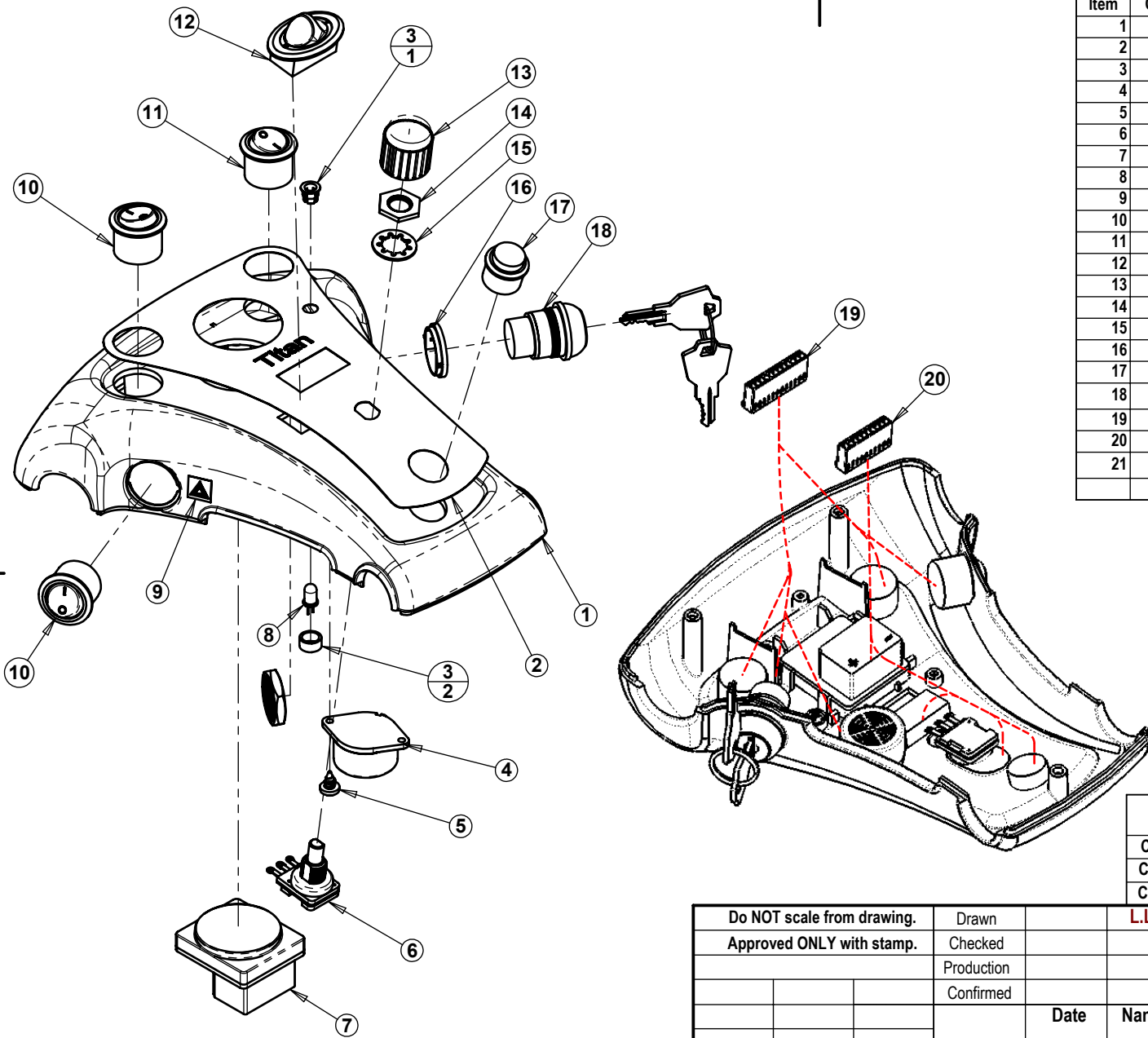


Item	Qty.	Cat No.	Description
1	1	63-75-001	Handle for Piston Actuator
2	1	63-75-703	Steering Column
3	2	74-02-010	Screw Allen M4x35 Galv.
4	2	74-10-006	Nut Nylok M4 Galv.
5	2	63-74-046	Screw for Axle Bolt M6x12
6	1	63-75-024	Piston - Tilting Mechanism
7	1	63-75-022	Part 3 of Head Stem $\phi 22$
8	1	63-75-702	Fork Column Holder
9	2	74-10-004	Nut Nylok M8 Galv.
10	1	63-75-043	Axle Connector for Tiller
11	2	63-74-024	Screw Axle $\phi 8 \times M6 \times 30$
12	1	63-75-023	Screw Allen M8x110
13	1	62-70-056	Cable + Guide 550/385
14	2	63-00-005	Adjustable Cable Stop (including nut)
15	1	63-70-028	Cable Lock LY IPB + Set Screw M4x4
16	1	60-75-005	Close End Wire Terminal

Do NOT scale from drawing.			Drawn		L.L.
Approved ONLY with stamp.			Checked		
			Production		
			Confirmed		
			Date	Name	
General Tolerances:					
			Holes Dia.	Linear	Angular
Date	Confirmed	Update	\pm mm.	\pm mm.	\pm °

Drawing No.		 TZORA Active Systems Ltd. <small>Tel: 972-3-5398999 Fax: 972-3-6320879 www.tzora.com</small>
20-76-017a		
Part Name:		
Tiller Frame Assembly		
Date created	Scale	Sheet
21 Apr 2009	1:4	1 of 1
Cat. No.		
20-76-017		

TAS A4H Primary.drwdoc




Item	Qty.	Cat No.	Description
1	1	See Table	Panel Cover - machined - Red/Blue/Grey
2	1	68-75-201	Sticker for panel
3	1	60-00-005	LED Guard Ring
4	1	22-76-002	Buzzer + Harness Assembly
5	1	74-09-007	Screw Philips Pan Head for plastic WN1442 3/8"
6	1	22-76-001	Potentiometer 22K Assembly
7	1	22-76-006	Battery Meter Assembly
8	1	22-76-004	LED + Harness Assembly
9	1	68-75-203	Sticker f/Hazard
10	2	22-76-008	Hazzard and Hi-Lo Switch Assemblies
11	1	22-76-009	Light Switch Assembly
12	1	22-76-005	Indicator Selector Assembly
13	1	62-70-011	Knob for Potentiometer 22K
14	1	74-20-002	Nut for Potentiometer
15	1	74-20-001	Lock Washer for Potentiometer
16	1	62-70-044	Key Switch Adapter Ring
17	1	22-76-007	Horn Switch Assembly
18	1	22-76-003	Key Switch + Harness Assembly
19	1	60-75-014	Connector 12 Pin 6471-121 KK-0.1
20	1	60-75-015	Connector 10 Pin 6471-111 KK-0.1
21	0.400	60-75-056	Plastic Spiral Sleeve KS-8 (in 3 pieces)

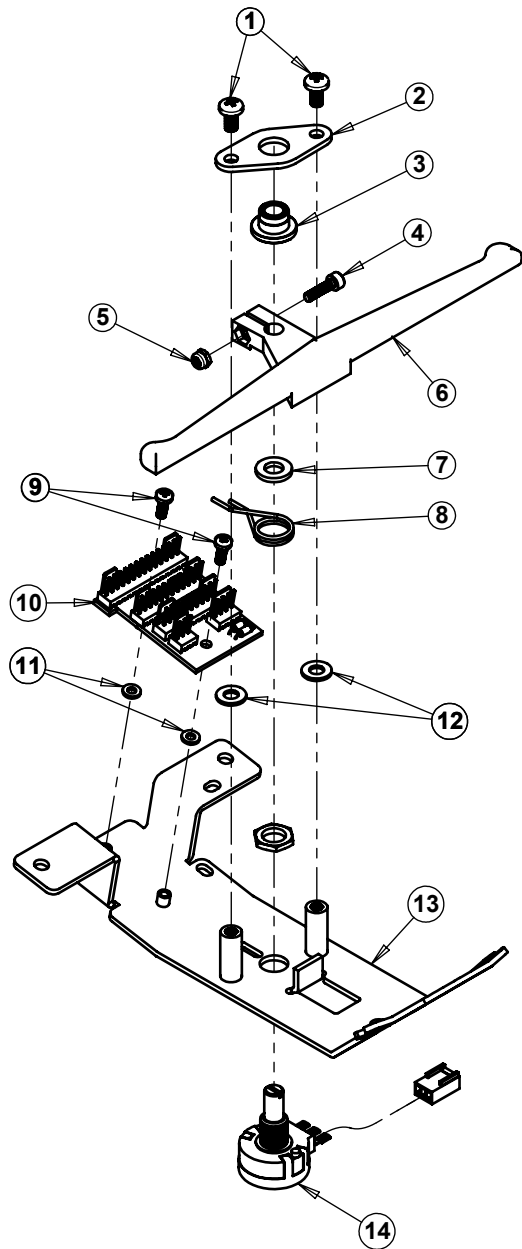
REMARKS:

- 1) Route of wiring. -----
- 2) Plastic Spiral Sleeves not shown.


Name	Cat. No.	Panel Cover - Machined (Part No. 1)
Control Panel Top Assembly - Red	20-76-021	20-76-008
Control Panel Top Assembly - Blue	20-76-022	20-76-009
Control Panel Top Assembly - Grey	20-76-023	20-76-010

Do NOT scale from drawing.			Drawn		L.L.	Drawing No.		 TZORA Active Systems Ltd. <small>Tel: 972-3-5398999 Fax: 972-3-6320879 www.tzora.com</small>			
Approved ONLY with stamp.			Checked			20-76-021a		Part Name:			
			Production					Control Panel Top Assembly			
			Confirmed					Red/Blue/Grey			
				Date	Name			Date created	Scale	Sheet	Cat. No.
			General Tolerances:					20 Apr 2009	1:2.5	1 of 1	See Table
Date	Confirmed	Update	± mm.	± mm.	± °						

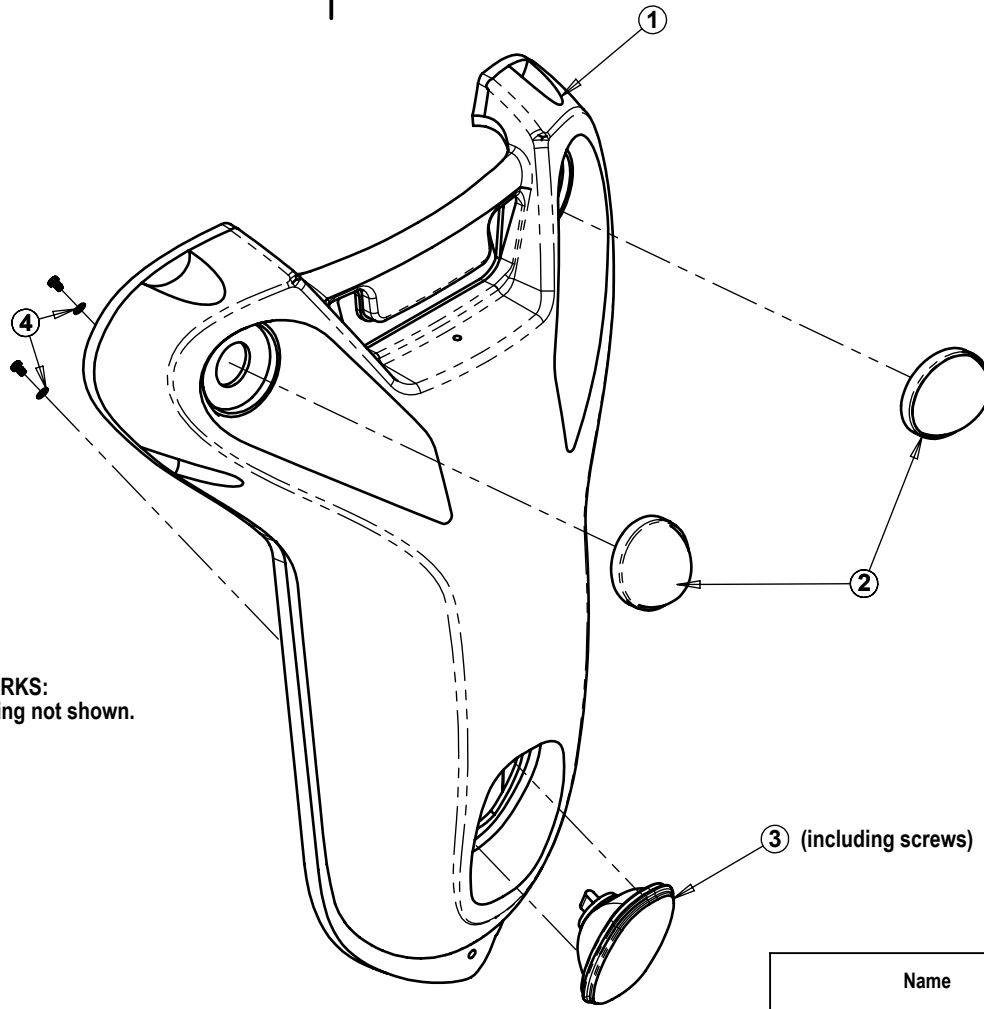
TAS A4H Primary.drwdot



Item	Qty.	Cat No.	Description
1	2	74-06-002	Screw Philips Pan Head M4x8 Galv.
2	1	60-70-016	Potentiometer Closing Plate
3	1	62-70-028	Nylon Slide Bearing
4	1	74-02-009	Screw Allen M3x12 Galv.
5	1	74-10-002	Nut Nylok M3 Galv.
6	1	62-70-043	Wig-wag Lever
7	1	74-12-001	Washer M6x12x1.5 Galv.
8	1	65-70-006	Spring for Potentiometer
9	2	74-06-013	Screw Philips Pan Head M3x8 Galv.
10	1	22-75-001	PCB Panel Assembly
11	2	60-70-073	Insulation Washer M3
12	2	74-12-005	Washer M5x10x1.0 Galv.
13	1	63-75-007	Control Panel Support
14	1	22-75-003	Potentiometer 5K + Harness Assembly


Do NOT scale from drawing.			Drawn		L.L.	Drawing No.				Tel: 972-3-5398999
Approved ONLY with stamp.			Checked			22-75-002a				Fax: 972-3-6320879
			Production							www.tzora.com
			Confirmed							
				Date	Name	Part Name:				
			General Tolerances:			Wig-wag Assembly				
			Holes Dia.	Linear	Angular	Date created	Scale	Sheet	Cat. No.	
Date	Confirmed	Update	± mm.	± mm.	± °	21 Apr 2009	1:2.5	1 of 1	22-75-002	

Item	Qty.	Cat No.	Description
1	1	See Table	Tiller Front Cover - Red/Blue/Grey
2	2	22-75-004	Turning Light - Orange - Assembly
3	1	22-76-006	Headlight Assembly w/screws
4	2	74-12-009	Washer M3 Galv.

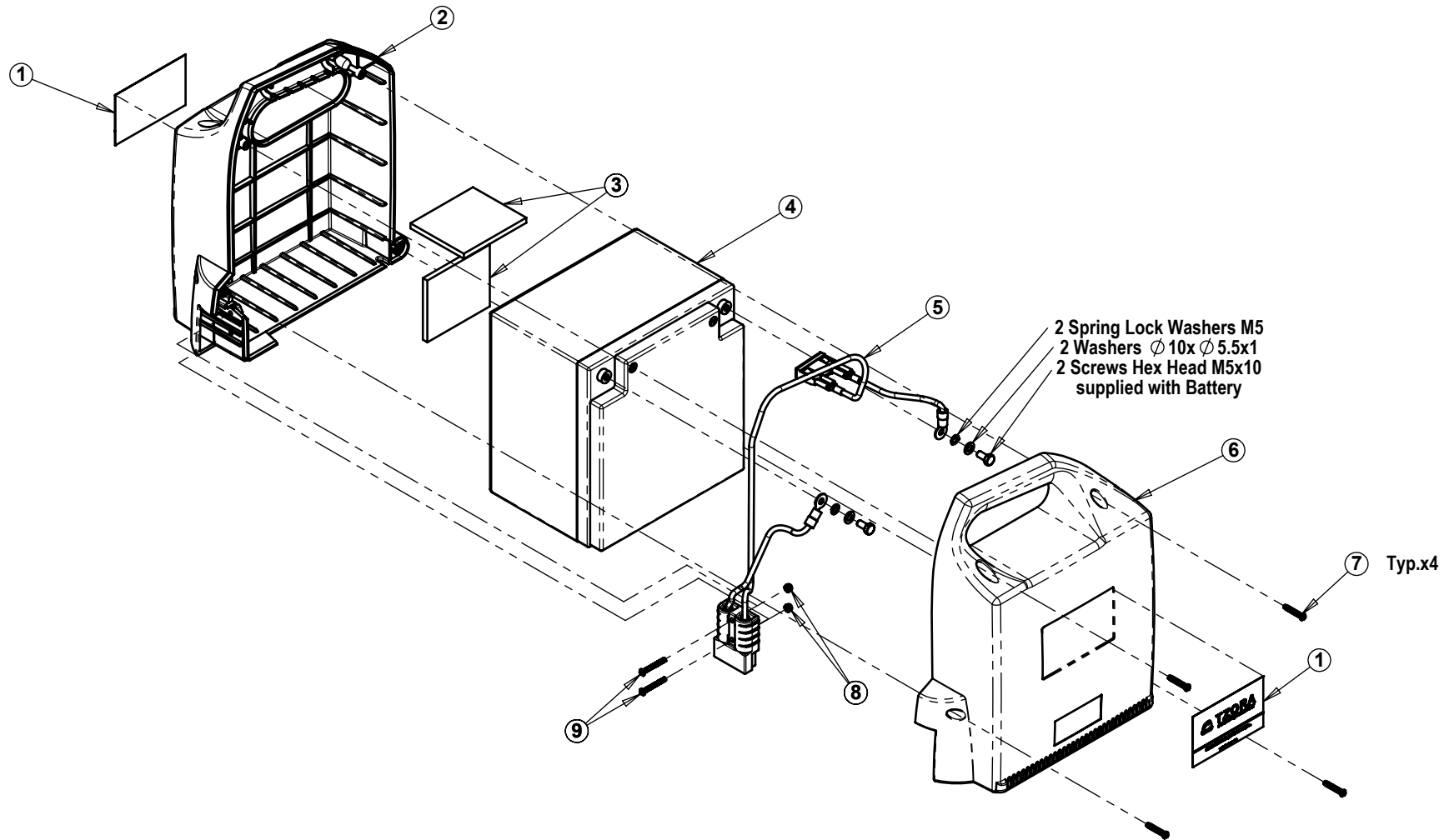


REMARKS:
1. Wiring not shown.

Name	Cat. No.	Tiller Front Cover (Part No. 1)
Tiller Front Cover Assembly - Red	20-76-018	62-76-015
Tiller Front Cover Assembly - Blue	20-76-019	62-76-016
Tiller Front Cover Assembly - Grey	20-76-020	62-76-017


Do NOT scale from drawing.			Drawn		L.L.	Drawing No.			
Approved ONLY with stamp.			Checked			20-76-018a			
			Production			 Tel: 972-3-5398999 Fax: 972-3-6320879 www.tzora.com			
			Confirmed						
				Date	Name	Part Name:			
			General Tolerances:			Tiller Front Cover Assembly			
			Holes Dia.	Linear	Angular	Red/Blue/Grey			
Date	Confirmed	Update	± mm.	± mm.	± °	Date created	Scale	Sheet	Cat. No.
						19 Apr 2009	1:4	1 of 1	See Table

TAS A4H Primary.drwdot



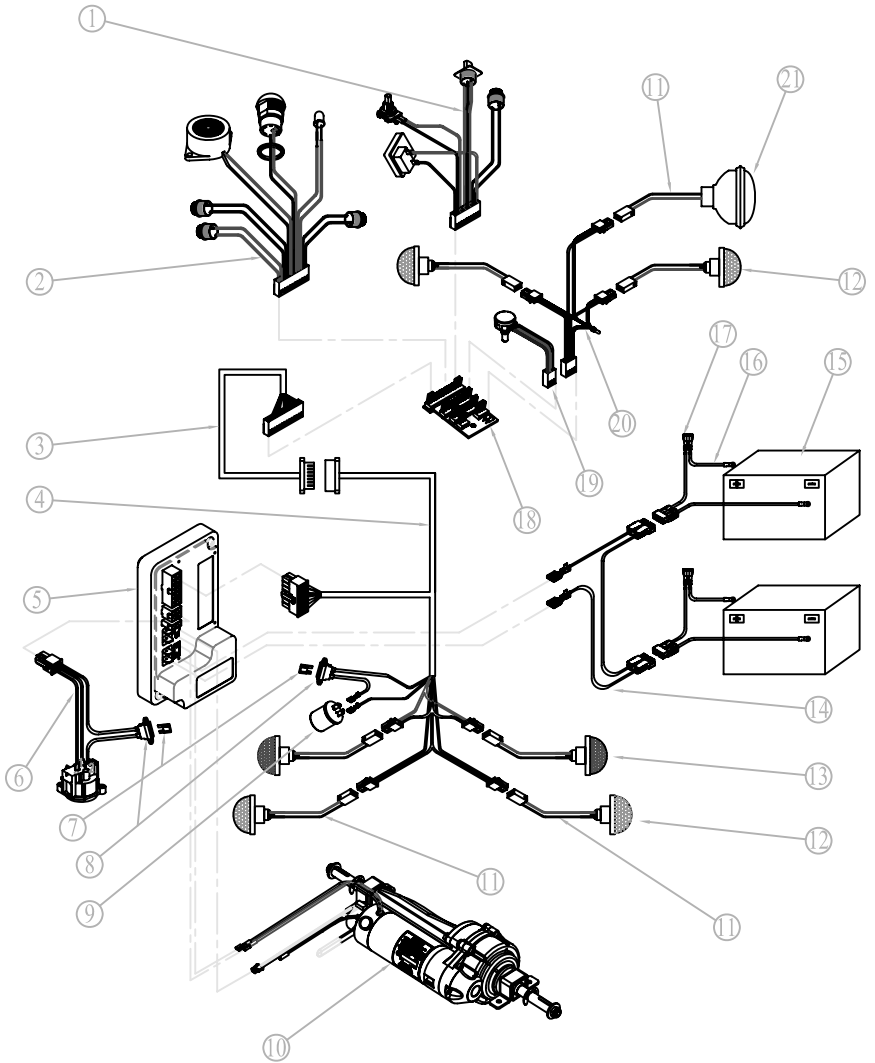
Item	Qty.	Cat No.	Description
1	2	68-75-502	Sticker - Battery Logo
2	1	62-74-013	Battery Case - Left
3	2	62-74-019	Foam for Battery
4	1	61-74-001	Battery 12V 26AH
5	1	22-76-011	Battery Wiring
6	1	62-74-012	Battery Case - Right
7	4	74-09-008	Screw Philips Pan Head Tap. for plastic M3x25 Galv.
8	2	74-10-002	Nut Nylok M3 Galv.
9	2	74-06-012	Screw Philips Pan Head M3x25 Galv.

Do NOT scale from drawing.			Drawn		L.L.
Approved ONLY with stamp.			Checked		
			Production		
			Confirmed		
			Date	Name	
General Tolerances:					
			Holes Dia.	Linear	Angular
Date	Confirmed	Update	± mm.	± mm.	± °

Drawing No.			
22-74-001a		Tel: 972-3-5398999 Fax: 972-3-6320879 www.tzora.com	
Part Name:			
Battery Assembly			
Date created	Scale	Sheet	Cat. No.
05 May 2009	1:5	1 of 1	22-74-001

TAS A4H Primary.drw.dwt

RPD313T-010000a



Ⓢ: (0/0) X

Ⓢ: X

Ⓢ: X

Ⓢ: X

Ⓢ: X

Ⓢ: X

RPD313T

Electric System Drawing

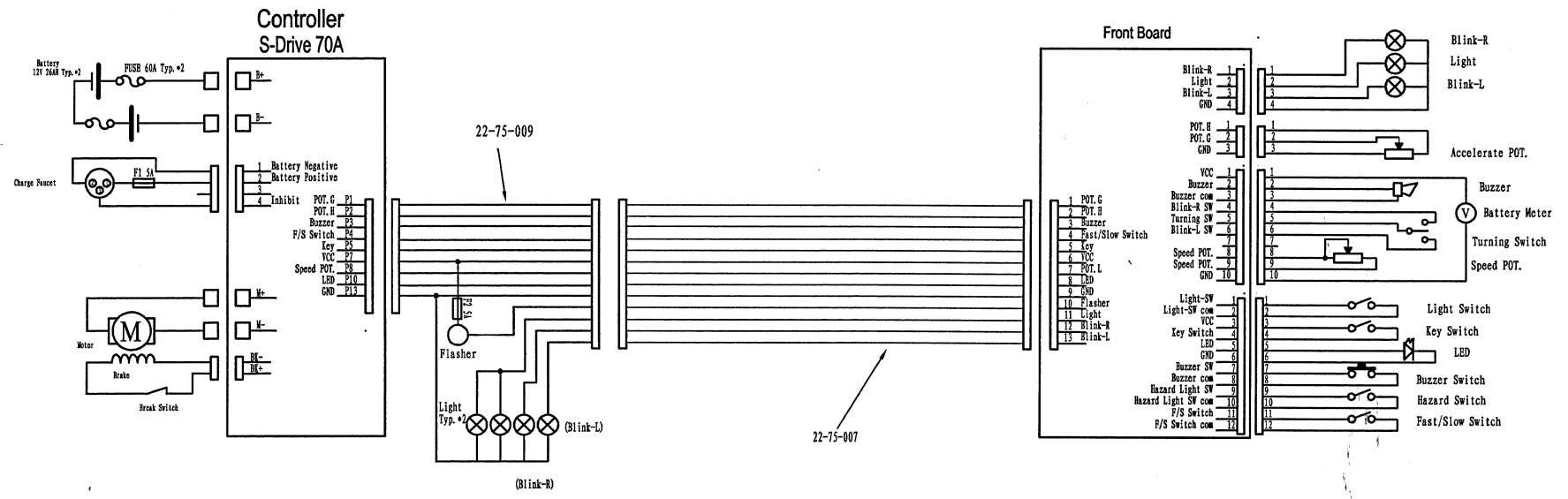
RPD313T-010000

Sample/Pord. Qty

Version	Name	Date
??	??	??
??	??	??
??	??	2008/11/25

S	1	?	(P1/2)
?	2	?	1
<p>Ⓢ: X</p> <p>(Repow Electric Scooter CO.)</p>			

RPD313T-0101000a



借(通)用件标记
 数模编号
 旧底图总号
 底图总号
 签字
 日期

Electric Dalgram
 TZORA TITAN 3W
 DATE: 12/05/09

TITAN Parameter List

For S-Drive 70A Controller

File Name: titan anat.prg
 Description: S-Drive Default Program <Mod>
 Controller Type:
 Controller Serial Number:
 Vehicle Serial Number:

Thu Sep 11 11:59:10 2008

Speed Settings

	Fast	Slow
Forward Acceleration (0.1 Seconds)	22	22
Forward Deceleration (0.1 Seconds)	11	6
Reverse Acceleration (0.1 Seconds)	40	40
Reverse Deceleration (0.1 Seconds)	20	20
Max Forward Speed (%)	100	50
Min Forward Speed (%)	20	15
Max Reverse Speed (%)	40	25
Min Reverse Speed (%)	10	10
Speed Limit Pot Enabled	Off	

Operation Settings

Sleep Timer (Minutes)	10
Throttle Invert	Yes

Battery Settings

Low Battery Flash Level (Bars)	2
Cable Resistance (milli-Ohms)	40
Calibration Factor	100
Low Battery Alarm	Off

Inhibit Settings

Inhibit 1: Mode	1
Inhibit 1: Operation	Latching
Inhibit 1: Speed (%)	0
Inhibit 2: Mode	1
Inhibit 2: Operation	Non-Latching
Inhibit 2 Speed (%)	50
Inhibit 3: Mode	1
Inhibit 3: Operation	Latching
Inhibit 3: Speed (%)	0

General Settings

Soft Stop	On
Brake Time (milli-Seconds)	1100
Output Voltage (Volts)	24
Status Output Type	0 (0 = Trucharge, 1 = LED, 2 = Analogue)
Diagnostic Flash Sequence	2
Reverse Alarm	Off
Pulsed Reverse Alarm	Off
Diagnostic Alarm	Off
Brake Disconnected Alarm	On
Brake Fault Detect	On
Brake Light	Off
Freewheel Speed Limit	100
Freewheel Time Out (0.01 Seconds)	20
Freewheel Enable	Disable

Motor Settings

Current Limit Max (Amps)	60
Boost Drive Current (Amps)	70
Boost Drive Time (Seconds)	3
Current Foldback Threshold (Amps)	60
Current Foldback Time (Seconds)	30
Current Foldback Level (%)	75
Motor Cooling Time (Seconds)	120
Current Foldback Temperature (Deg C)	80
Current Limit Min (Amps)	30
Motor Compensation (milli-Ohms)	50
AntiRollback Level	12
Pull-away Delay (centi-Seconds)	3
Slope Factor	400
Anti Rollback Velocity	60

Factory Settings

	Max	Min
Acceleration (0.1 Seconds)	100	10
Deceleration (0.1 Seconds)	100	1
Forward Speed (%)	100	10
Reverse Speed (%)	100	0

Throttle Settings

Throttle Type	1	(0 = Single-ended, 1 = Wig-wag, 2 = Unipolar)
Throttle Deadband (%)	39	
Throttle Gain (%)	100	
Throttle Operated at Power-up	2	(0 = Drive, 1 = Inhibit, 2 = Trip)
Throttle Reference Test	On	
ISO Test Resistor	On	

9. FAULT FINDING

Hereunder are some types of disorders, which can usually be repaired rather simply. If these following measures are unsuccessful, contact your authorized dealer!

Problem		Check Point
The driving of the Titan is too slow or insufficient, the status indicator lamp flashes slowly		Batteries are exhausted and need to be recharged
The Titan does not function, the Battery/Status indicator flashes rapidly. Count the number of flashes:	1 flash	The battery needs charging or there is a bad connection to the battery. Check the connections to the battery or charge batteries.
	2 flashes	There is a bad connection to the motor. Check all connections between the motor and the controller.
	3 flashes	The motor has a short circuit to a battery connection.
	4 flashes	Freewheel is engaged
	5 flashes	Not used.
	6 flashes	The controller is being inhibited from driving; this may be because the battery charger is connected.
	7 flashes	A throttle fault is indicated. Make sure that the throttle is in the rest position before switching on the scooter
	8 flashes	A controller fault is indicated. Make sure the controller connections are secure.
	9 flashes	The parking brakes have a bad connection. Check the parking brake and motor connections. Make sure the controller connections are secure.
	10 flashes	An excessive voltage has been applied to the controller. This is usually caused by a poor battery connection. Check the battery packs and controller connections.