



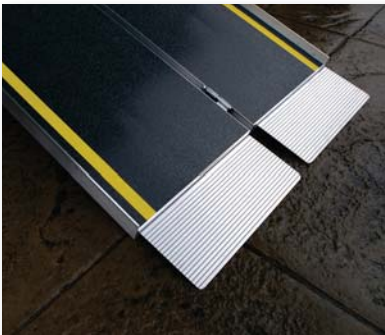
SUITCASE® Advantage Series®



The Advantage Series® is a SUITCASE ramp you can separate, making it the easiest to carry and move. By simply removing two hinge pins, it quickly separates into two lightweight sections, each with its own ergonomically designed handle.

This ultra-strong, single-fold ramp provides the safety and strength required while remaining light and portable. Features an applied skid-resistant tape with self-adjusting bottom transition plates for easy conversion from ramp to ground.

Manufactured of welded aircraft-grade aluminum.



Bottom transition plates adjust to uneven terrain



Ergonomically designed flexible, non-breakable handles offer convenient carrying and a comfortable grip

TOP LIP EXTENSION (TLE)

Extend the usefulness of your SUITCASE® Advantage Series® portable wheelchair ramp with the Top Lip Extension (TLE). This optional plate increases the top lip from 3" to 9", allowing the ramp to clear the rear bumper of SUVs and vans. Shipped as a pair.



Patented

SUITCASE® Advantage Series®

SPECIFICATIONS	SUITCASE AS2	SUITCASE AS3	SUITCASE AS4	SUITCASE AS5	SUITCASE AS6	TLE
Made of aluminum	•	•	•	•	•	•
Non-skid surface	•	•	•	•	•	•
Usable size	2' x 29½"	3' x 29½"	4' x 29½"	5' x 29½"	6' x 29½"	8½" x 137⁄8" x 23⁄8"
Folded size (L x W x H)	2' x 15" x 4½"	3' x 15" x 4½"	4' x 15" x 4½"	5' x 15" x 4½"	6' x 15" x 4½"	n/a
Built-in carrying handle	•	•	•	•	•	n/a
Weight (lbs.) *	6 ea. (2 sections)	8 ea. (2 sections)	10 ea. (2 sections)	13 ea. (2 sections)	15 ea. (2 sections)	5 per set
Weight capacity (lbs.)	800	800	800	800	800	**500
For wheelchairs & scooters	•	•	•	•	•	•
Usage guidelines	Curbs, 1 step	Curbs, 1 step	Curbs, 1-2 steps	Curbs, 1-2 steps, some minivans	1-3 steps, some minivans & SUVs	n/a

* Weights are approximate and may vary.

Weights listed are per ramp section (each section can be carried, assembled, and stored separately).

Consult your equipment's owner guide for proper degree of incline. Never exceed its recommendations.

** Ramp weight capacity reduced when used with the TLE.



Bariatric weight capacity = 800 lbs. or greater



UPS Shippable