

Platform Safety Rail

For use with the PASSPORT™ Residential Vertical Platform Lift



Manufactured in the USA

© 2013 Homecare Products, Inc. All rights reserved. All text and images contained in this document are proprietary and may not be shared, modified, distributed, reproduced, or reused without the express written permission of EZ-ACCESS®, a division of Homecare Products, Inc.

INTRODUCTION

Thank you for purchasing the Platform Safety Rail option for the PASSPORT™ Residential Vertical Platform Lift.



The Platform Safety Rail is a required option designed exclusively to provide additional personal stability if anyone will be standing on the lift.




Correct installation and proper use of the Platform Safety Rail is necessary. Before installing and using this option, please read and understand this Assembly Manual in its entirety, and refer to the PASSPORT™ Residential Vertical Platform Lift's Installation Manual and User Manual as needed. To obtain a replacement copy of any of these manuals, please call 253-249-1108 or visit www.ezaccess.com.

TOOLS TYPICALLY REQUIRED

- ✓ 1/2" socket or 1/2" wrench
- ✓ 5/32" Allen wrench
- ✓ 3/16" T-handle Allen wrench or similar tool
- ✓ 25' tape measure
- ✓ Rubber mallet
- ✓ Power drill
- ✓ 3/8" drill bit
- ✓ Pencil or similar marker

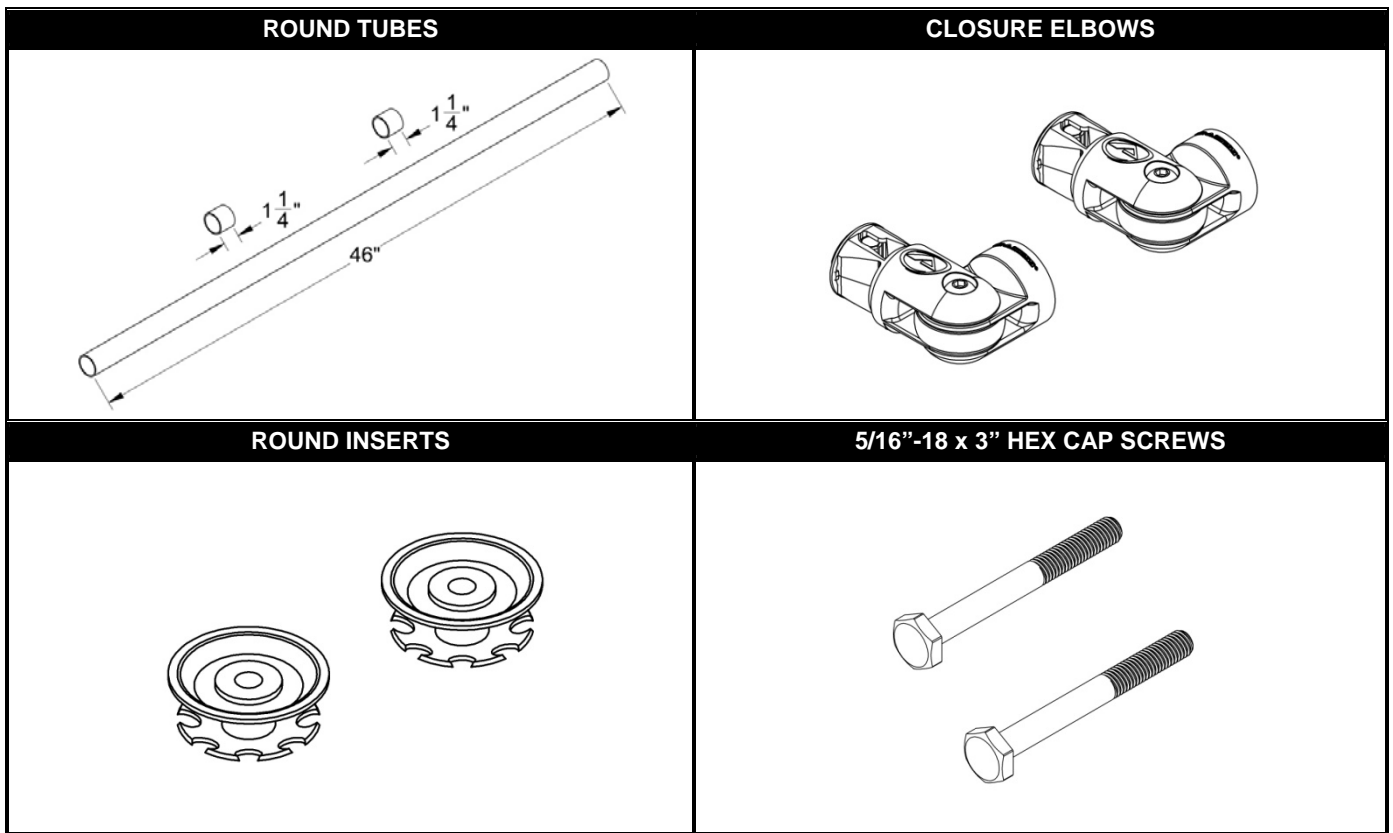
SAFETY and WARNINGS

-   The Platform Safety Rail is a required to be installed and used if anyone will be standing on the VPL.
-   When properly installed and used, the Platform Safety Rail option is designed exclusively for the purpose of providing additional personal stability while standing on the VPL.
-   Before installing and using this option, please read instructions carefully and assure you understand the proper and safe installation and use of this option. Please observe all safety precautions. Please retain these instructions for future reference.

-  Do not play on or around.
-  Do not use the Platform Safety Rail for anything other than its intended use.
-  Read, understand, and follow all product labels and Assembly Manual instructions before using Platform Safety Rail.
-  Do not use Platform Safety Rail if it is damaged or unstable.
-  Periodically check all fasteners and verify all nuts, bolts, screws and other fasteners are secure.
-  Carefully inspect your Platform Safety Rail for damaged, missing, or inoperable parts prior to each use.

1. BASIC SYSTEM COMPONENTS

1.1. **NOTE:** Items shown are not actual size.

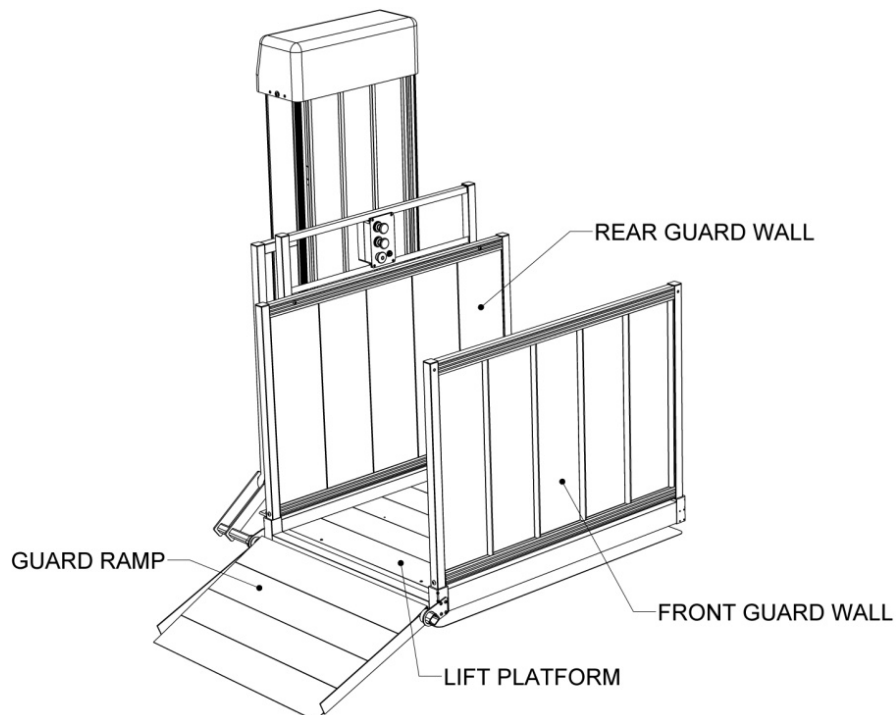


2. BEFORE YOU START

2.1. The Platform Safety Rail can be installed on either the front or rear platform guard wall. Before installing the Platform Safety Rail determine which side will be more convenient for the intended occupant's particular situation (FIG. 2.1).

⚠ WARNING: Do not install the Platform Safety Rail on the outside the platform guard walls. Install on the inside (platform side) only.

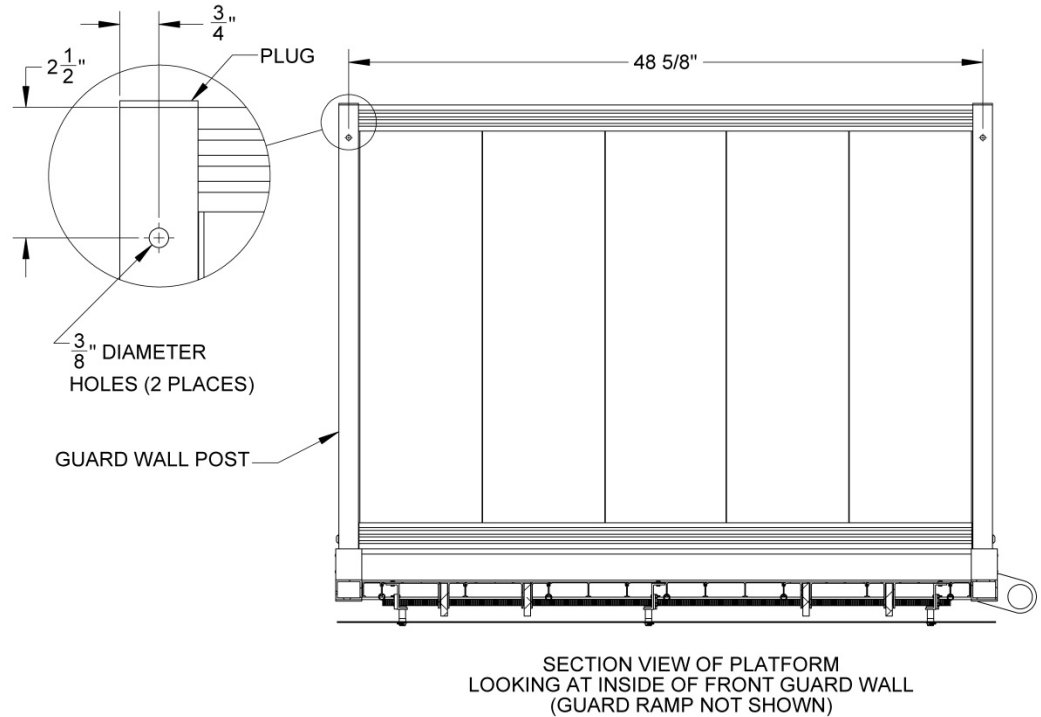
FIG 2.1



3. PLATFORM SAFETY RAIL INSTALLATION

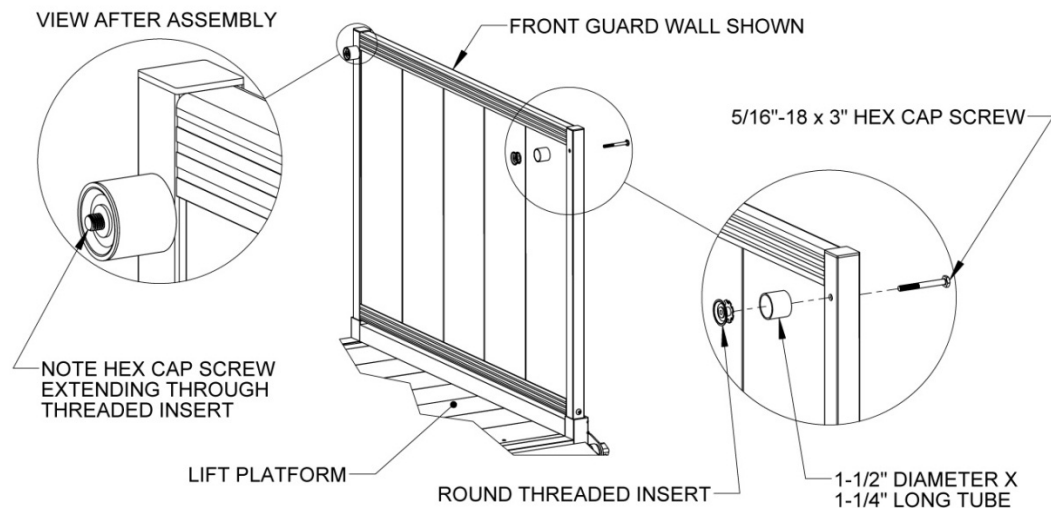
- 3.1. Measure $\frac{3}{4}$ " in from the end of one guard wall post and make a mark. Then measure $2\frac{1}{2}$ " down from the top of the guard wall post (excluding the plug) and mark. Find the location where the two marks cross. Mark a location on the other guard wall post $2\frac{1}{2}$ " down from the top of the guard wall post (excluding the plug) and $48\frac{5}{8}$ " away from where the two marks cross on the opposite post. Drill $\frac{3}{8}$ " diameter holes through both posts at the marked locations (FIG. 3.1).

FIG. 3.1



- 3.2. Install a round threaded insert into one end of each $1\frac{1}{2}$ " diameter x $1\frac{1}{4}$ " long tube. Use a rubber mallet to make sure the threaded inserts seat fully into the tubes.
- 3.3. Hold one $1\frac{1}{2}$ " diameter x $1\frac{1}{4}$ " long tube with the threaded insert to the inside of the guard wall (the tube will be oriented toward the guard wall post and the insert will be oriented toward the other guard wall). Install a $\frac{5}{16}$ "-18 x 3" long hex cap screw through the hole you previously drilled and into the threaded insert then tighten securely. Refer to FIG. 3.2 for the correct orientation. Repeat for the other guard wall post.

FIG. 3.2



- 3.4. Locate the closure elbows and disassemble them by removing the elbow assembly screws and nuts. Install the elbow halves without the threaded holes into both ends of the $1\frac{1}{2}$ " diameter x 46" long Platform Safety Rail tube. Make sure rounded side of the elbow halves are facing the same direction in both ends then tighten internal set screws with a T-Handle Allen wrench or similar tool (FIG. 3.3).

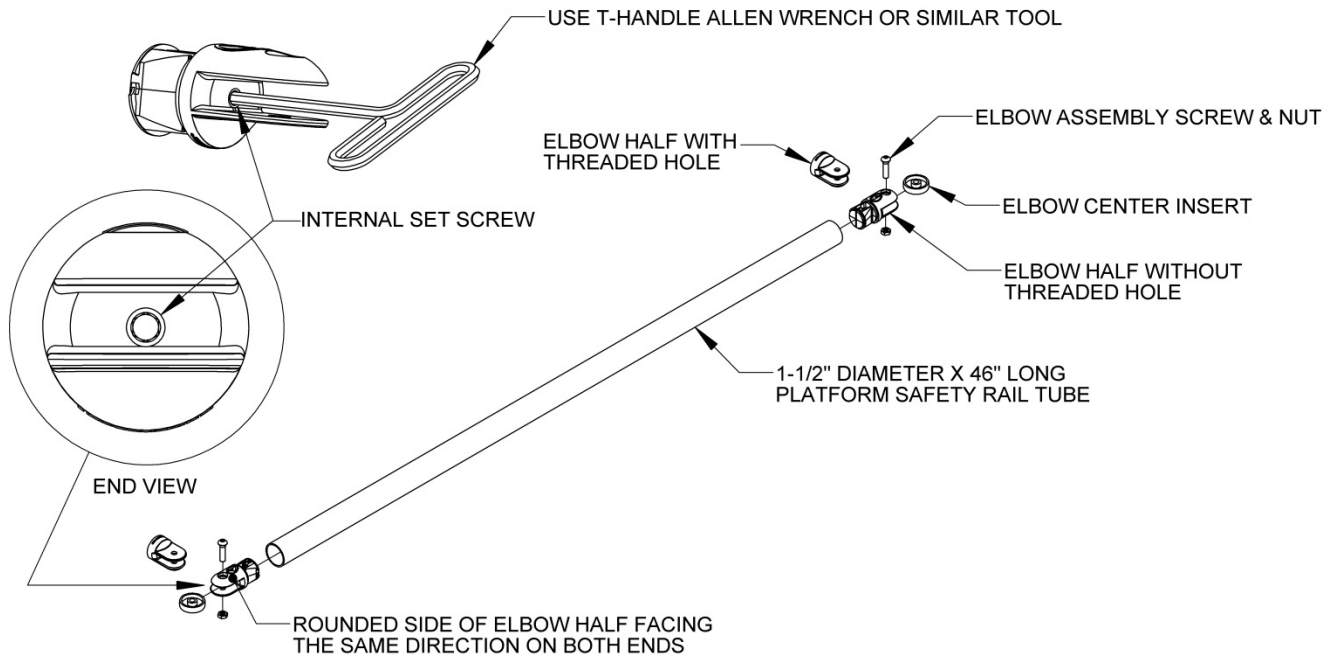


FIG. 3.3

- 3.5. Install the elbow halves with the threaded holes onto the portion of the 5/16"-18 x 3" long hex cap screw which extends past the threaded inserts and tighten securely. After tightening, the rounded side of the elbow halves should be on the bottom facing the platform. It may be necessary to loosen the hex cap screws holding the round tubes with the threaded inserts and rotate in one direction or the other then re-tighten to get the elbows to end up in the correct orientation when fully secured (FIG. 3.4).

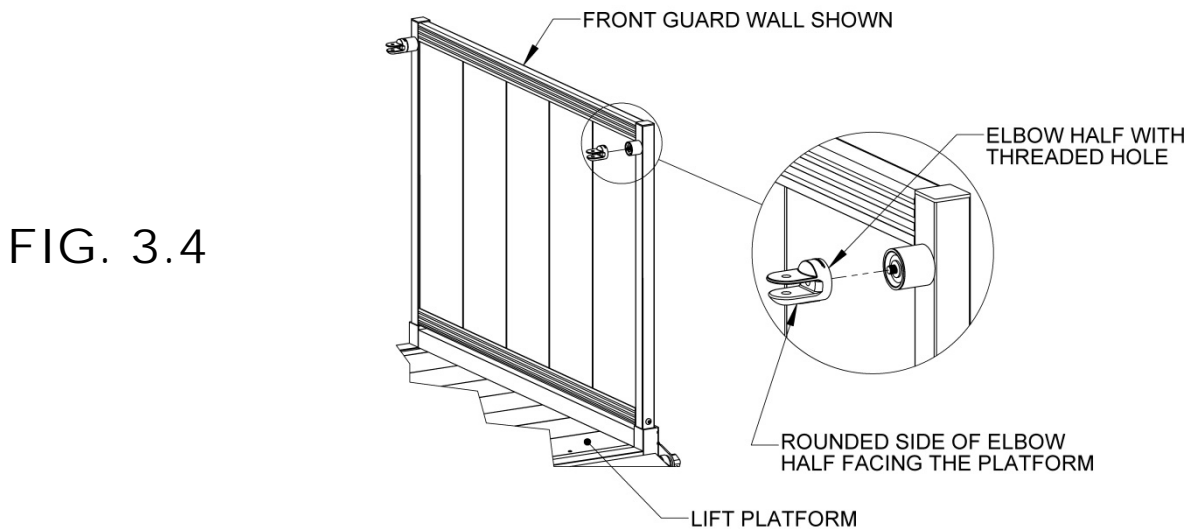


FIG. 3.4

- 3.6. Assemble the 1-1/2" diameter x 46" long Platform Safety Rail tube to the guard wall by reassembling the elbows. Align the holes in the elbow halves and replace the center insert then insert the elbow assembly screw through all the components on one side. Repeat on the opposite side. Place the elbow assembly nuts on the screws and tighten securely (FIG 3.5).
- 3.7. Check to ensure the Platform Safety Rail is properly attached and secured. If needed, tighten internal set screws, elbow assembly screws, and 5/16"-18 x 3" long hex cap screws.

FIG. 3.5

